

METROPOLITAN Airport News™

AUGUST 2025

The Journal of the Metropolitan New York Airport Community

The Allure of New York City

Whether you are a seasoned New Yorker or an awestruck newcomer, the magic of NYC is truly captivating.

Also Inside:

My Favorite Breed Is 'Rescue'

Wien Air Alaska: First in the 49th State

Quick Trips to Venice, Italy

Airport Employment, Upcoming Events, & Aviation News



CitiMed

*Complete Medical Care
Injury Doctors*

Work & Accident Related INJURY URGENT CARE

Employment, DOT and FAA Physical Exams

Drug and Alcohol Testing



All Testing Completed On-Site

CitiMed JFK

JFK International Airport Building 78A
78a North Boundary Road
Jamaica, New York 11430

718-656-9500

Mon - Fri 7 am to 11 pm

Sat - Sun 9 am to 4 pm

citimedny.com



PUBLISHER

Kathryn Bliss
kbliss@metroairportnews.com

EDITOR-IN-CHIEF

Julia Lauria-Blum
jblum@metroairportnews.com

CREATIVE DIRECTOR

Raymond F. Ringston
rringston@metroairportnews.com

PHOTOGRAPHER

Beverly Holder
bholderphoto@gmail.com

COMMUNITY RELATIONS

Roberta Dunn
rdunn@metroairportnews.com

ADVERTISING

Edward J. Garcia
egarcia@metroairportnews.com

EDITORIAL CONTRIBUTORS

Tanya Austin
taustin@metroairportnews.com

Maureen Katz
mkatz@metroairportnews.com

Jonathan Katz
jkatz@metroairportnews.com

Robert G. Waldvogel
robertw@metroairportnews.com

**METROPOLITAN
AIRPORT NEWS**

JFK International Airport
PO Box 300877
Jamaica, NY 11430
Tel: (347) 396-0904
info@metroairportnews.com

www.metroairportnews.com

Permissions: Material in this publication may not be reproduced, stored in a retrieval system, or transmitted in any form or by any means (electronic, mechanical, photocopying, recording, or otherwise) without the prior written permission of the publisher.

The views and opinions expressed in *Metropolitan Airport News* are those of the authors and advertisers, and do not necessarily reflect the policy or position of the publisher. Articles presented in this publication are for general information and educational purposes and do not constitute legal or financial advice.

©Copyright 2025 by Airport Media, Inc.
All rights reserved • Printed in the USA

Empire State Development
Certified MWBE
Woman-Owned Business Enterprise

New York Press Association
NYFA

Welcome to the August issue of *Metropolitan Airport News*. Before I get into the current issue, I want to take a moment to reflect on the incredible feedback we received from last month's Pan Am issue, *Re-Tracing the Transatlantic*. This article sparked a tremendous amount of nostalgia; the stories were plentiful, all recalling a wonderful era at our Queens airports, in which everyone worked together, socialized together, and really felt like a family. In some cases, they were families, generations of Pan Am employees.

It's a true testament to how positive corporate culture can create something so special that thirty years later, people are still smiling when they share stories from those days.

Speaking about smiling, the **Airport Community Foundation (ACF)** held its 3rd annual ACF Golf Classic a few weeks ago. The joy on the course, whether at Middle Bay or Seawane, was evident in all who participated. It didn't matter if you golfed, played pickleball, volunteered, or joined us after for dinner and networking; everyone was happy to be there and enjoyed a wonderful day supporting a great cause.

I was happy to have been part of it. Make sure to keep your eye out for the next ACF event; you won't want to miss it. You can register online to receive updates at www.acfhelps.org.

In reading the feature article for the August issue, *The Allure of New York City*, I was pleasantly surprised to see that one of the things that I have planned to do during our 'staycation' was mentioned! I was born here in New York, lived here my entire life, and I've never been to Arthur Avenue in the Bronx!

This summer, I plan to spend a day at the Bronx Botanical Gardens, another place I've never been, and then end the day on Arthur Avenue.

We live in a place that many people around the world travel great distances to visit. Take a day to check off something from your own list of places to visit right here in our backyard. I'm very much looking forward to it.

Stay safe and cool out there, and do your best moving people and cargo all over the world! Visit our website to register and explore the steady stream of current articles and information. www.metroairportnews.com

I hope you enjoy the issues, and I will see you around the airports!



KATIE BLISS, *Publisher*
kbliss@metroairportnews.com



ON THE COVER

Located along the East River waterfront on Washington Street, in between Plymouth Street and Water Street, is the iconic view of the Manhattan Bridge in DUMBO, Brooklyn. DUMBO stands for "Down Under the Manhattan Bridge Overpass". (JULIENNE SCHAER)



Signature Smile
GENERAL & COSMETIC DENTISTRY

WE MAKE DENTAL CARE SIMPLE - FROM AIRPORT PICKUP TO INSURANCE SUPPORT

- ▶ Free transportation available from JFK/ LGA airports
- ▶ Special New Patient offers for SIDA badge holders
- ▶ All major dental PPO plans accepted

PROUDLY SERVING PATIENTS FOR 20 YEARS

- INVISALIGN
- CROWN & BRIDGES
- VENEERS
- DENTAL IMPLANT
- DENTAL IMPLANT RESTORATION
- ROOT CANALS
- PEDIATRIC DENTISTRY
- EMERGENCY DENTISTRY
- DENTURES
- TEETH WHITENING



TWO EASY WAYS TO INSTANTLY BOOK YOUR APPOINTMENT

www.mybrooklynheightsdentist.com

Scan QR Code or Call Us



718-717-8770

DEDICATED DENTAL PROVIDER FOR ALL AIRLINE AND AIRPORT EMPLOYEES



FAST FIVE

“Fast Five” is a succinct Q&A examining topical airport subjects of importance to the interviewee.



Francine E. Poppo

Executive Director, School Sisters of Notre Dame Educational Center

Francine joined the School Sisters of Notre Dame (SSND) Educational Center staff two years ago. Prior to her position, she served as a Board Certified Chaplain at Good Samaritan Nursing and Rehab in Sayville, NY. She owned a publishing company for over 20 years. Francine is thrilled to be part of the vibrant community of Woodhaven, Queens. The women who come to the center every day to learn are truly inspirational, and Francine considers it an absolute honor to be a part of their journeys. www.ssndecwomens.org

1 When was the Woodhaven SSND Educational Center founded?

Initially located in Jamaica, Queens, the School Sisters of Notre Dame Educational Center was founded in 2004 by three women who were part of the community of the School Sisters of Notre Dame: **Cathy Feeney, Jean McLoughlin, and Janice Algje**. Since 2009, they have been serving the community of Woodhaven. Sister Cathy Feeney remained the Executive Director for almost 20 years until she retired in 2023. Our mission is to empower underserved women of all races and faiths to reach the fullness of their potential within a safe and welcoming environment. The Center provides programs that educate and nurture the whole person. This Catholic sponsored center is rooted in the belief that women are agents of transformation for the family, society, and the world.

2 Tell us about the programs and services offered by the SSND?

Our services are open to all women over the age of 20. The core of our programs has always included two main areas—GED (where women study all subject areas to earn their high school diploma) and ESOL (where women work hard to improve their English speaking, listening, reading, and writing skills). We also recognize the need to bridge the gap between education and job and career readiness; as such, we offer computer literacy and citizenship preparation classes. As our mission includes “empowering women to live to the fullness of their potential,” we offer additional programs that provide opportunities for women to examine and address the health and wellness of their whole bodies. These include healthcare initiatives and seminars; information on diet and nutrition; collaboration with and referrals to community and library programs; and one-on-one assistance with job and college applications, and resumes.

3 How does SSND assist in providing local opportunities, particularly in Queens?

We believe all our programs and services provide opportunities for women in the region, encompassing the Port Authority airports. In particular, we actively seek ways to bring awareness to opportunities by inviting leaders from the airport industry businesses to speak to our students about opportunities and pathways that are

available to them that work within and alongside their own individualized plans and goals for career improvement and advancement.

4 How has the airport community been a benefit to SSND?

Individuals and corporations within the airport community have been very supportive of the SSND Educational Center's mission and ministry since its inception. Our efforts to strengthen and grow those relationships include our participation in wonderful organizations such as the **JFK Chamber of Commerce, JFK Rotary Club, and Airport Community Foundation**. Each year, SSND holds a gala fundraiser honoring two JFK Airport community leaders with a *Spirit of Service Award*. These organizations' resources, partnerships, and generous sponsorships afford our Center to grow in new ways to meet the changing needs of our times, especially in the area of technology. We recently purchased 20 new laptops, providing our students with access to online learning, Microsoft 365, resume creation, and practice in workplace technology skills.

5 What is one of your most memorable student stories at SSND?

There are so many stories that shine as examples of our mission statement in action. I'd like to share two that come to mind. One of our students who is studying for her GED passed the math section with an almost perfect score. After she passed, she continued to visit our Center daily to assist other women with their math studies and also began volunteering as a tutor for an 8th-grade student at the library twice a week. She recently spoke at one of our events. She said that she not only thinks our Center is a wonderful, safe community of women, but that she also believes very strongly that educational opportunities for all people can transform families and communities. Another example of a woman who, while studying for her GED at our Center, earned a full-time position at JFK Airport. When she joined her peers at our Closing Ceremony in June, she handed me an envelope full of cash and said that this donation was her first paycheck. She had been planning to do this since she began at our Center, and she would never forget the many kindnesses she experienced there. She said, “Whenever I walk through the doors of SSND Educational Center, I hear a voice in the walls that shouts to me, **‘You can do it!’** ■

EDITOR'S NOTEBOOK

My Favorite Breed Is 'Rescue'

According to the World Animal Foundation, every year approximately 920,000 homeless pets are euthanized in the United States (390,000 dogs and 530,000 cats) primarily due to a lack of space.

Providing a loving home for a rescued pet is one of life's greatest pleasures, as well as an essential commitment that an adopter makes toward caring for a deserving animal, companion, and treasured friend. Adopting a dog or cat through a rescue organization saves lives and gives them a second chance. Many rescues come from unimaginable circumstances, such as cruelty, neglect, abandonment, or owners who are no longer able to care for them due to illness or a change in living situations. Some have never known a life off the streets, outside of a kennel, or a puppy mill, where mass breeding for profit is the rule, and little or no regard is given to an animal's health, well-being, or basic necessities.

In the U.S., animal rescue encompasses various types of organizations and facilities, including municipal shelters, private non-profit shelters, rescue groups, and foster homes. These entities play a crucial role in providing care, rehabilitation, and rehoming opportunities for animals in need.

When pet rescue comes to mind, most people think of their local animal shelter, but what many may not realize is that, very often, rescued pets are pulled in the 11th hour from being euthanized, before traveling a long distance via air transport and ground to a safe haven with a local rescue organization, a foster, or an adoptive home.

The rescue group that I volunteer with is called **Pioneers for Animal Welfare Society, Long Island (PAWS LI)** www.paws-li.org. PAWS is an all-volunteer, non-profit organization dedicated to promoting respect for all living things, as well as attempting to reduce the increasing companion animal population. PAWS has been in existence since 1976. It is one of the oldest Long Island animal welfare groups and, in the coming year, will be celebrating its 50th anniversary of saving thousands of animals in need.

There are many charitable organizations that provide air transport across state lines and several outside the USA. Most flight rescue organizations have a core network of general aviation volunteer pilots who transport rescue animals by air, in and out of small and regional airports across the United States. Throughout the country, hundreds to thousands of licensed private pilots donate their time, resources, or personal aircraft to transport rescued dogs and cats to safety. Since most of these smaller aircraft have a limited flight

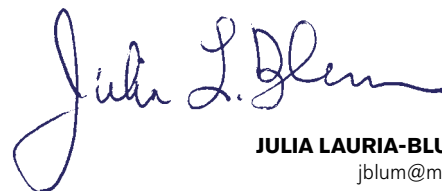
range of 200-500 miles, long-distance rescue flights are coordinated amongst several pilots who are assigned a 'leg' along a given flight route to the rescue's planned destination. Transports originating from outside the USA most often utilize commercial airlines to fly rescues into the country. When flights are not available into an airport near the rescue's final destination, the use of ground transport must be coordinated to pick up the rescues at the airport and deliver them by van or car to their safe haven.

Brooklyn-based **Pilots to the Rescue (PTTR)** www.pilotstotherescue.org is a 501 (c) (3) non-profit, volunteer-driven public benefit aviation organization started by Michael Schneider in 2015 to combine his love of aviation and saving animals at risk. He is a commercial, instrument-rated pilot who flies out of Essex County Airport in Caldwell, New Jersey. This year, PTTR celebrates its 10th year of saving homeless pets from euthanasia and transporting them to larger shelters and animal rescue organizations where they are more likely to be adopted. PTTR collaborates with animal shelters across the U.S. to identify pets on euthanasia lists, securing space in other states and coordinating rescues with its volunteer pilot fleet. These pilots fly animals from critical situations to safety, ultimately saving lives.

Thus far, in 2025, Pilots to the Rescue has flown 52 missions, 73,386 miles, and has rescued 1,372 souls, including 591 cats, 764 dogs, and 10 foxes.

Ultimately, rescue organizations, especially local non-profits like Pilots to the Rescue and Pioneers for Animal Welfare Society (PAWS), cannot do the urgent work they do to sustain their mission to save the thousands of homeless animals in need without critical and ongoing support, be it through monetary or in-kind donations, fundraising events, corporate grants and sponsorships, and most vitally...volunteers.

Check out their links and help save a life!



JULIA LAURIA-BLUM, *Editor-in-Chief*
jblum@metroairportnews.com



THE LAW OFFICES OF MCINTYRE, DONOHUE, ACCARDI, SALMONSON, & RIORDAN, LLP

PROTECTING YOUR RIGHTS. SECURING YOUR FUTURE.



SPECIALIZING IN:

WORKERS' COMPENSATION
SOCIAL SECURITY DISABILITY
3/4'S DISABILITY PENSION

HURT AT WORK?
CALL US TODAY!

866.557.7500

PROTECTING WORKERS THROUGHOUT NY STATE

CALL US TODAY FOR A FREE CONSULTATION!



inquire@licomplaw.com



licomplaw.com

ASAK

**BEHIND EVERY FLIGHT,
SUPPORTING EVERY
TAKEOFF WITH
PRIDE AND PRECISION.**

- GROUND HANDLING
- PASSENGER SERVICES
- GSE MAINTENANCE
- ★ - CARGO & MAIL HANDLING ★
- FUMIGATION SERVICES
- ANCILLARY SERVICES
- SNOW REMOVAL & DE-ICING



**VETERAN OWNED & OPERATED,
LOOKING FOR A FEW GOOD PEOPLE.
AN EQUAL OPPORTUNITY EMPLOYER.**



**FOR FURTHER INFO
WWW.ASAK.AERO**



PANYNJ Breaks Ground On Expanded Truck Parking Plaza at JFK Airport

On-Airport Truck Parking Lot Will Triple Truck Parking Capacity, Reducing the Impact of Illegally Parked Trucks in Local Communities.

The Port Authority of New York and New Jersey joined with elected officials and community leaders from southeast Queens to break ground on a project that will expand a truck parking facility at John F. Kennedy International Airport (JFK), tripling the number of trucks that can park on-airport, and adding new concessions and bathrooms. Expanded on-airport truck parking will help to better manage the increasing cargo operations at JFK while also addressing community concerns with the growing number of trucks that park illegally on neighborhood streets near the airport.

“Breaking ground for the expansion of truck parking facilities at JFK Airport is a win for the airport, a win for the community and a win for the drivers who support our cargo operations and help to keep our region moving,” said Port Authority Executive Director **Rick Cotton**. “This is another example of how the Port Authority has been working closely with our neighbors to improve conditions for the community while we make historic investments at JFK Airport.”

“Whether it’s at JFK International, Newark Liberty or LaGuardia Airport, the Port Authority has been laser-focused on working with the communities surrounding our airports to access the economic benefits of these facilities and lessen their environmental impacts,” said Port Authority Chairman **Kevin O’Toole**. “Working together, we are reimagining our airports as places that will become true community assets.”

The Port Authority Board of Commissioners previously approved a supplemental lease with the operator of the JFK Airport Plaza, adjacent to the development site, to build and operate the expanded truck parking and new concessions. The current Airport Truck Plaza includes a food court, convenience store, gas station,



electric vehicle charging stations and space for up to 50 trucks for staging and parking. The parking expansion project will accommodate up to 100 additional trucks and will require the demolition of Building 110, a former food preparation facility that has been vacant for more than 25 years. Completion of the project is expected by the end of the third quarter of 2026.

This new development will complement the existing plaza, which is frequented by airport employees, taxi drivers and for-hire vehicle drivers, in addition to truck drivers. The operator will also refurbish and modernize the existing public restrooms to create a more attractive and welcoming space.

Expanding the parking facility was identified as a priority for the Port Authority to address both community concerns and airport needs with the growth of air cargo at JFK. In 2024, JFK handled 1.67 million tons of cargo, a 5 percent increase from 2023 and 25 percent more than in 2019, making it the eighth-busiest cargo airport

in the U.S. and 21st globally. The JFK air cargo sector plays a vital role in the regional and national economy, supporting more than 93,000 direct and indirect jobs and generating \$11.4 billion in economic activity annually.

In April 2025, the Port Authority, in partnership with Realterm and Worldwide Flight Services, celebrated the opening of a new state-of-the-art \$270 million consolidated cargo handling center at JFK. As the first new cargo facility at JFK in 25 years, this new cargo center consolidates operations from four separate cargo zones into a single modernized location, reducing congestion, streamlining operations and unlocking space for future development.

In addition, the expansion of the truck parking facility reflects the Port Authority sustainability goals of reaching net-zero greenhouse gas emissions by 2050 by including 35 universal electric-vehicle charging stations, zero-waste procedures and other technologies that will reduce emissions. ■



The Brooklyn Bridge offers stunning views of the Manhattan skyline, with iconic landmarks like One World Trade Center and the Empire State Building prominently featured. (JULIENNE SCHAER)

The Allure of New York City

Whether you are a seasoned New Yorker or an awestruck newcomer, the magic of NYC is truly captivating.

BY JULIA LAURIA-BLUM
jblum@metroairportnews.com

New York City... its appeal is undeniable, with its mixture of culture, celebrated sights, diverse experiences, and its offerings of something for every traveler, whether a first-time visitor, a seasoned voyager, or a local denizen.

With four of its five boroughs on islands, it is geographically unique. Composed of Manhattan Island, Staten Island, and Long Island, where Brooklyn and Queens are located, only the Bronx is on the mainland of New York State, and each borough is sepa-

rated by a series of waterways and rivers.

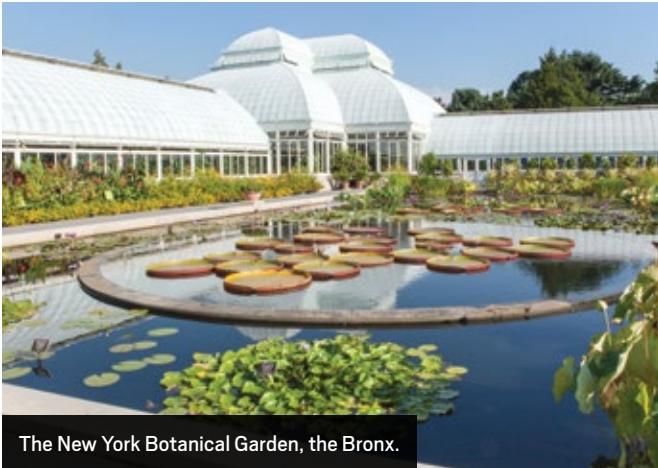
Whereas Manhattan is separated from New Jersey by the Hudson River, and the Harlem and East Rivers separate Manhattan from the Bronx and Long Island, the Long Island Sound separates the Bronx from Queens, and Staten Island is separated from Brooklyn, Manhattan, and New Jersey by the Narrows, New York Harbor, and the Arthur Kill and Kill Van Kull waterways, respectively.

New York City's extensive urban infrastructure consists of a complex network of bridges, tunnels, ferries, subway channels, roadways, and airports operated by the Metropolitan Transportation Authority

(MTA), the New York City Department of Transportation (NYCDOT), and the Port Authority of New York & New Jersey (PANYNJ).

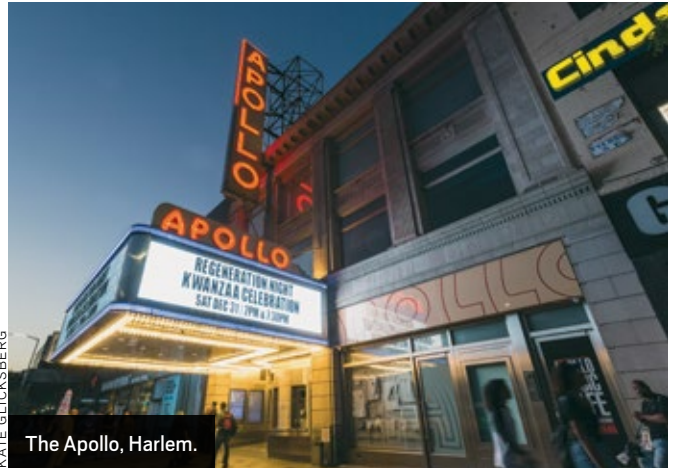
For over a century, the Port Authority's network of critical bridges, tunnels, and bus terminals, a commuter rail line, the busiest seaport on the East Coast, and its airports have transported hundreds of millions of people and moved essential goods into and out of the region.

This includes the agency's operation of the region's major commercial airports: John F. Kennedy International Airport (JFK), LaGuardia Airport (LGA), and Newark Liberty International Airport



The New York Botanical Garden, the Bronx.

TAGGER YANCEY IV
KATE GLICKSBERG



The Apollo, Harlem.



Chinatown, Manhattan

BRITTANY PETRONELLA
TAGGER YANCEY IV



Queensboro Plaza Station, Long Island City

(EWR). Alongside Stewart International Airport (SWF) in Orange County, NY, these airports represent the largest airport system in the United States. In 2024, alone, the Port Authority's four commercial airports served a record 145.9 million passengers, surpassing previous records.

With the agency's \$37 billion 10-year capital plan that includes the transformation of JFK International, LaGuardia Airport, and Newark Liberty International, in addition to a wide array of other new and upgraded assets, including the \$2 billion renovation of the nearly century-old George Washington Bridge, this massive infrastructure project continues to solidify the New York metropolitan region along the Atlantic coast as, not only as a 'gateway', but as a major hub for international transportation, trade, immigration, and tourism.

Within the Port Authority's revamping of all three of its major airports at a cost of nearly \$30 billion, in collaboration with its Public Private Partnerships (PPS), the

agency has successfully worked, and continues to work, on instilling each one of its airports with a distinct 'New York Sense of Place'. Through its many initiatives that include public art programs featuring local artists, architectural design that incorporates New York landmarks, and partnerships with local businesses to provide unique retail and dining experiences, the Port Authority's goal is to make the airports a reflection of New York City's vibrant culture and energy.

Travelers now experience these initiatives at the soaring new arrivals and departures hall at LaGuardia's Terminal B, which opened its doors in June 2020, followed by Delta's new arrivals and departures hall at Terminal C, which opened in June 2022.

At Newark Liberty International Airport, the recently completed Terminal A is the centerpiece of the airport-wide renaissance designed to establish it as a world-class gateway for the New Jersey and New York metro region.

And with the current transformation of JFK International Airport underway, the \$1.5 billion expansion of Terminal 4, led by Delta and JFK International Air Terminal (JFKIAT); the \$125 million commercial redevelopment program at Terminal 8, which follows the completion of a \$400 million expansion led by American Airlines, and British Airways; the ongoing \$4.2 billion development of a state-of-the-art new Terminal 6, led by JFK Millennium Partners, which will connect with JetBlue's existing Terminal 5, and the \$9.5 billion state-of-the-art New Terminal One (NTO), with a consortium of financial sponsors, the vision and goal for a unified, modern airport with a 'New York Sense of Place' is one that all travelers will be greeted with as they arrive to, or depart from New York along their travel journey.

At a July 2025 announcement of an expansive market for travel essentials at the forthcoming NTO at JFK that will celebrate

Continued On Page 12

Continued From Page 11

New York's architecture and soaring skylines, Port Authority Executive Director, **Rick Cotton** said, "We are prioritizing the customer experience at our airports as the first impression of the New York-New Jersey area for millions of international travelers, so it is vital that our \$19 billion redevelopment of JFK includes diverse local businesses from our local community to provide that distinct New York sensibility as travelers move through JFK," adding, "There is no place like New York, and these local businesses help JFK reflect that unique New York energy as an exciting part of travelers' memories of their time here."

For both international and domestic travelers arriving into New York City airports, there is a vast and almost unlimited array of experiences that await them after they pass through the gates and doors leading out of the terminal ... and each one of New York City's five boroughs, whereas many as 800 languages are spoken, have their very own vibe and 'essence' to experience along their journey.

Manhattan

Famously branded as 'Gotham', 'The City That Never Sleeps', or 'The Big Apple' Manhattan is the most densely populated and geographically smallest of New York City's five boroughs. It is a cultural epicenter, renowned for its energy, resilience, diversity, iconic landmarks, and as a dynamic and



CHRISTOPHER POSTLEWATTE

Bethesda Terrace, Central Park, Manhattan

enriching melting pot. 'The Big Apple' is a global hub, leading in finance, media, and politics. Rooted in its many cultural movements, it is renowned for its significant visual arts and music scene, world-class culinary scene, fashion industry, and the city's ever-changing skyline, featuring the Empire State Building, the Chrysler Building, and the Statue of Liberty. Both visitors and native New Yorkers can enjoy Manhattan's over 50 world-class museums, its art galleries, music and dance venues, Broadway, Times Square, Rockefeller Center, Central Park, and its many, many hosted cultural events. And that just scratches the surface of things to do in the 'Empire City'.

The Bronx

Also known as "The Borough that Ruth Built" and "The Boogie Down Bronx" is the northern-most of the five boroughs of New York City. Filled with history and culture, the Bronx is where Hip-Hop was born and where Babe Ruth became a baseball legend. Some of its major attractions include the New York Botanical Garden, the Bronx Zoo, the Bronx Museum of the Arts, Yankee Stadium, Bronx' Little Italy on Arthur Avenue, the Hip Hop Museum, Pelham Bay Park, City Island, Woodlawn Cemetery, a National Historic Landmark noted for its impressive funerary architecture and notable burials, and so much more.

Brooklyn

'The Borough of Trees' and 'The Borough of Homes and Churches' - these names highlight Brooklyn's residential areas, religious institutions, and the many parks and green spaces in the borough. Brooklyn is the most populous of the five boroughs of NYC; it shares a land border with Queens and is located at the westernmost end of Long Island. Formerly an independent city, Brooklyn is sometimes referred to as 'The Twin City', a name that remains a historical reference point when noting the relationship between Brooklyn and New York City before their merger.

With several bridge and tunnel connections to Manhattan, across the East River, the most famous, architecturally

Continued On Page 14



JOE BUGLEWICZ

Arthur Avenue Market, The Bronx



CAO's In-Person Orientation

Join us for an in-person orientation at the Rockaway Career Center to learn more about exciting opportunities at JFK Airport.

Call (347) 562-2113 to reserve your spot!

August 20, 2025

Rockaway Career Center

1931 Mott Avenue, Far Rockaway, NY 11691

Looking to Fill Numerous Positions!



**Council for Airport
Opportunity (CAO)**

Tel: (718) 523-7100

www.caonyj.com

All Applicants Must Present:

- Social Security Card (Unlaminated)
- State Driver License, Learner's Permit, or Non-Driver ID
- Working Documents Required
- Will Be Drug Tested (Cannabis Included)



Continued From Page 12

significant connection is the Brooklyn Bridge and the Verrazzano-Narrows Bridge, which connects the borough to Staten Island. For both locals and out-of-towners, Brooklyn features a diverse array of attractions. Parks and gardens include Prospect Park, the Brooklyn Botanic Garden, Brooklyn Bridge Park, and Floyd Bennett Field Gateway National Park. Some of its cultural institutions are the Brooklyn Museum, the New York Transit Museum, and the Brooklyn Academy of Music.

With classic riverfront views, DUMBO, an acronym for Down Under the Manhattan Bridge Overpass, is popular with both tourists and locals, while fashionable Williamsburg is laden with stylish boutiques, trendy cafes, dance clubs, music halls, and street art that graces repurposed factories. Additionally, its waterfront offers gorgeous views of Manhattan and seasonal venues for outdoor concerts and food markets. Its largest entertainment venues include Coney Island, Brighton Beach, and the Barclays Center.

Queens

'The World's Borough' is the easternmost and largest of New York City's boroughs, located on the western end of Long Island, and is home to both LaGuardia and JFK International Airport. Often dubbed as 'The World's Borough', Queens is largely recognized as the most diverse, with residents



JULIENNE SCHAEER

Coney Island, Brooklyn

who represent a wide range of cultural and ethnic backgrounds, as well as the most linguistically diverse.

Queens offers a huge range of tourist attractions, including parks, museums, sports venues, and cultural landmarks. Some of its most popular attractions are Flushing Meadows Corona Park, the site of two World's Fairs, featuring the Unisphere, the Queens Museum, and the New York Hall of Science.

Astoria Park's large waterfront park offers views of the Manhattan Skyline and the nearby Museum of the Moving Image, located on the grounds of the historic

Kaufman Astoria Studios, where visitors can explore the history of film and television with interactive exhibits.

The Noguchi Museum is a museum and sculpture garden in Long Island City, designed and created by the Japanese American sculptor Isamu Noguchi, and the Louis Armstrong House Museum is dedicated to the American jazz legend, also known as 'Satchmo'.

For sports lovers, Citi Field, built between 2006 and 2009, is home to the MLB's New York Mets. The USTA National Tennis Center, which hosts the US Open each year, is its next-door neighbor.

Other outdoor activities include the Jamaica Bay Wildlife Refuge, a haven for bird-watching and nature lovers; the historic Fort Totten Park, with scenic waterfront views; and Rockaway Beach, a vast, sandy beach located on the Rockaway Peninsula offering beachgoers plenty of 'fun-in-the-sun with its lively 5-mile boardwalk and multitude of concessions.

Staten Island

The southernmost and lesser known of New York City's boroughs. As the least densely populated and most suburban borough in the city, Staten Island is separated from the adjacent state of New Jersey by the Arthur Kill and from the adjacent borough of Brooklyn by New York Bay. In reference to its nickname, 'The Borough of Parks', the moniker highlights Staten

Continued On Page 16



KATE GLUCKSBERG

Flushing Meadows Corona Park, Queens

Sustainability Is At the Forefront of Everything We Do



*Proudly serving
New York and the
Tri-State area for
more than 20 years*



Get the Royal Advantage!

Compactor & Container Service
Demolitions & Clean Out
Document Shredding • Composting & More!

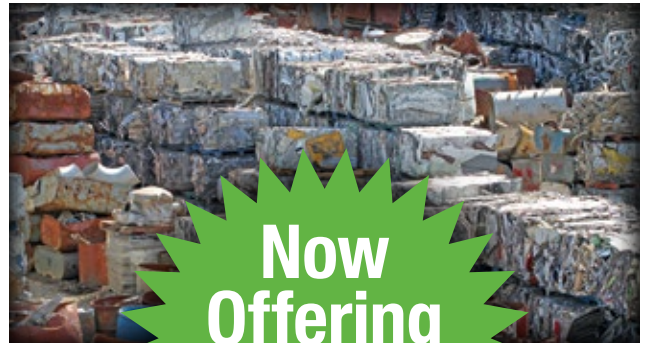
SINGLE STREAM MATERIAL RECYCLING

With the use of our Single Stream Material Recycling Facility, Royal helps to increase waste diversion rates up to 90%.

ROYAL
Waste Services, Inc.

(718) 526-2623

Call today for more information,
or to speak with a Royal Waste
Green Team Sustainable Consultant



**Now
Offering
Metal Recycling
With Rebates**

www.royalwaste.com

Continued From Page 14

Island's extensive parkland and green spaces, including Clove Lakes Park, High Rock Park, and the Greenbelt.

The Snug Harbor Cultural Center & Botanical Garden is a distinguished Smithsonian Affiliate and is also Staten Island's premier destination for culture and entertainment. And the New York Chinese Scholar's Garden is a truly unique attraction that adds a new dimension to the understanding of life in ancient China and serves as the perfect setting for a host of multi-cultural events.

The most famous of the borough's major attractions is the Staten Island Ferry, which offers a 25-minute scenic ride with views of the Statue of Liberty and the Manhattan skyline. As a free service, it is a convenient and economical way for both locals and tourists to travel between Staten Island and Manhattan. Each year, it is estimated that the Staten Island Ferry carries over 16 million passengers on its 5.2-mile run between the St. George Terminal in Staten Island and the Whitehall Terminal in Lower Manhattan.

Just steps away from the ferry is the historic 2,800-seat St. George Theatre, which is a performing arts venue and picture palace located on the North Shore of Staten Island. Built for theater operator Solomon Brill, the theater opened in December 1929. And whether before or after a show, Staten Island also boasts a unique culinary scene, including a variety of Italian fare and 24/7 diners.

Other attractions include Fort Wadsworth, one of the oldest former military installations in the nation, and the Historic Richmond Town; a restored 17th century village, which is Staten Island's largest and oldest institution that possesses some of the most storied historical items of American history, with more than 130,000 artifacts, photographs, and archival collections dating back to the 17th century.

Venturing out of the New York City limits from Staten Island, the Goethals Bridge, one of six bi-state crossings operated by the Port Authority, connects Staten Island to New Jersey. Just eight miles north are Newark Liberty Airport and Port Newark in Essex County, known for its substantial role as a transportation hub, diversified communities, and its proximity and access to New York City via bridge, tunnel, and roadway.



JULIENNE SCHAEER

Roosevelt Island Tram, Upper East Side, Manhattan

Essex County offers a variety of urban and suburban living, with attractions ranging from cultural institutions, historic sites, green spaces, to vibrant city centers. Key attractions include the Newark Museum of Art; Turtle Back Zoo; the South Mountain Reservation, featuring the Washington Rock Lookout, a historic site with views of the surrounding area; Greenwood Gardens, a horticultural garden with a focus on landscape design; and the New Jersey Performing Arts Center (NJ PAC).

Another 'must-see' attraction in Essex is Thomas Edison National Historical Park, where Thomas Edison's laboratory and

residence, Glenmont, are preserved in West Orange. Designed by architect Henry Hudson Holly in 1887, the Edison Laboratories operated for more than 40 years. Out of the Edison laboratories came the motion picture camera, improved phonographs, sound recordings, silent and sound movies, and the nickel-iron alkaline electric storage battery.

No matter which borough your NYC journey may take you through, and whether your arrival is by air, land, sea, or rail, New York's rich combination of history, diversity, its iconic landmarks, world-class museums, and vibrant cultural scene are a treasure to discover and an experience to remember. ■



MATTHEW PENROD

Staten Island Ferry Whitehall Terminal, Manhattan



BEACH 120TH STREET
718-634-3211

119-15 Rockaway Beach Blvd
Rockaway Park, NY 11694

Monday - 7am-6pm
Tuesday - 730am-5pm
Wednesday - 7am-6pm
Thursday - 730am-5pm
Friday - 7am-5pm
Saturday - 8am-11am
Closed Sunday

HYDROWORX EVO
AQUATIC THERAPY
AVAILABLE AT OUR
HOWARD BEACH
LOCATION!



HOWARD BEACH
718-843-3211

161-11 Cross Bay Blvd
Howard Beach, NY 11414

Monday - 730am-7pm
Tuesday - 8am-4pm
Wednesday - 730am-7pm
Thursday - 8am-4pm
Friday - 730am-7pm
Saturday - 8am-11am
Closed Sunday

LOCALLY OWNED & OPERATED!
CALL US TODAY!



2025 ACF Golf Classic

The airport community consistently demonstrates generosity with its time and resources, and July 24th was no exception. Friends and colleagues gathered for the 3rd Annual ACF Golf Classic, enjoying a day filled with golf, pickleball, delicious food, and camaraderie while supporting a worthy cause. Proceeds from the 2025 Airport Community Foundation Golf Classic will benefit local airport and aviation-related organizations and institutions. We extend our gratitude to our sponsors and volunteers for their ongoing support and encouragement. For more information and to register for updates from the Airport Community Foundation (ACF), please visit www.acfhelps.org. ■



Scan this QR Code to view videos and photos from the golf outing.





AIRPORT EMPLOYMENT

PREMIUM GUEST SERVICES COORDINATOR

The Premium Customer Services Coordinator (PCSC) will be responsible for the overall performance within the PCSC work area. The PCSC is a working member of the Premium Customer Services Group.

American Airlines
Job No.: 000282
Passenger Services
Full-time
JFK Airport, NY

RAMP SERVICE AGENT PART TIME

Fleet Service Clerks perform the handling of items on and off aircraft, carts, containers, and trucks; transporting items between terminals and aircraft; receiving, delivering, weighing and documenting of cargo in a cargo specific facility or a loading dock area.

American Airlines
Job No.: 000281
Ground Handling
Part-time
JFK Airport, NY

MANAGER REVENUE ACCOUNTING

The Manager Revenue Accounting is responsible for ensuring JetBlue's passenger revenue is accounted for and reported accurately and on time.

JetBlue
Job No.: 000279
Finance & Accounting
Full-time
Long Island City, NY 11101

GENERAL MANAGER I

The GM ensures the restaurant is clean, staffed, open for business, and operates to high operational and financial standards.

Brooklyn Tea & Market - JFK Terminal 4
Job No.: 000277
Food Service & Hospitality
Full-time
JFK Airport, NY

CUSTOMER SERVICE MANAGER, AIRPORT CUSTOMER OPERATIONS

American is looking for a goal-oriented Customer Service Manager (CSM) who wants to elevate their experience, knowledge, and network within the company.

American Airlines
Job No.: 000280
Passenger Services
Full-time
LGA Airport, NY

TECHNICAL SUPPORT CONTROLLER

The Technical Support Controller monitors fleet performance on a daily basis and provides recommendations for preventative maintenance, ongoing troubleshooting and/or aircraft recovery.

JetBlue
Job No.: 000278
Flight Operations
Full-time
JFK Airport, NY

ASSISTANT GENERAL MANAGER

The AGM ensures the restaurant is clean, ready for business, staffed, and operates to high operational standards.

Eataly Wine Bar
Job No.: 000276
Food Service & Hospitality
Full-time
JFK Airport, NY

EXECUTIVE DIRECTOR - OPERATIONS

The Executive Director - Operations role directs the branch/location operation activities of one of the company's largest airports that include several restaurants of various complexities and different concepts.

HMSHost
Job No.: 000275
Food Service & Hospitality
Full-time
JFK Airport, NY

STARBUCKS BARISTA AT TERMINAL 5

The Barista creates a great experience for our customers by providing quality beverages and products, quick service and providing a fun and memorable experience for our guests.

Starbucks
Job No.: 000274
Food Service & Hospitality
Full-time
JFK Airport, NY

MULTI-UNIT F&B DIRECTOR II

The F&B Multi Unit Director II ensures that all of the restaurants within the assigned Terminal/Concourse/zone are clean, staffed, open for business, and operating to high operational and financial standards by holding assigned General Manager(s) accountable.

HMSHost
Job No.: 000273
Food Service & Hospitality
Full-time
JFK Airport, NY

ADMINISTRATOR, ASSET MANAGEMENT & BAGGAGE

This position is accountable for managing all day-to-day administrative activities for the Asset Management & Baggage department.

JFKIAT T4
Job No.: 000270
Office & Administrative Support
Full-time
JFK Airport, NY

HVAC - MAINTENANCE TECHNICIAN

We have an incredible opportunity for a dynamic, energetic, and eager HVAC - Maintenance Technician in New York City!

DO & CO
Job No.: 000265
Janitorial & Facility Services
Full-time
Jamaica, NY 11430

AIRPORT EMPLOYMENT

NON-CDL DRIVER

We have an incredible opportunity for a dynamic Non-CDL Driver to join our growing New York Team!

DO & CO
Job No.: 000264
Trucking & Intermodal
Full-time
Jamaica, NY 11430

PASTRY SOUS CHEF

We have an incredible opportunity for a dynamic Pastry Sous Chef to join our growing New York Team!

DO & CO
Job No.: 000263
Food Service & Hospitality
Full-time
Jamaica, NY 11430

CDL TRUCK DRIVER

We have an incredible opportunity for a dynamic CDL Truck Driver to join our growing New York Team! Candidates must have a valid Commercial Driver's License (Class A or B) and meet TSA regulations to obtain a PANYNJ ID.

DO & CO
Job No.: 000262
Trucking & Intermodal
Full-time
Jamaica, NY 11430

JFK Airport, NY

EXPERIENCED CDL DRIVER-ROYAL WASTE-QUEENS

Royal Waste is looking for a safety conscious CDL Driver to join OUR GROWING TEAM at our location in Jamaica, NY.

Royal Waste
Job No.: 000252
Trucking & Intermodal
Full-time
Jamaica, NY 11423

DRIVER HELPER-ROYAL WASTE-BRONX

Royal Waste is looking for a safety conscious Driver Helper to join the team at our location in the Bronx.

Royal Waste
Job No.: 000251
Trucking & Intermodal
Full-time
Jamaica, NY 11423

CARGO PHYSICAL SECURITY SPECIALIST- JFK

A Cargo Physical Security Specialist focuses on safeguarding cargo during transport, storage, and handling.

Global Elite Group
Job No.: 000247
Security
Per Diem
JFK Airport, NY

COMMERCIAL HANDYMAN WITH CDL LICENSE

Street sweeper driver with experience as a maintenance person or in a similar role.

Aqueous Solutions
Job No.: 000231
Janitorial & Facility Services
Full-time
JFK Airport, NY

QUALITY MANAGER

The Quality Manager is responsible for all quality operations within the company, including quality assurance, quality engineering, AS9100 compliance, and the administration of the quality management system.

East/West Industries Inc.
Job No.: 000246
Manufacturing
Full-time
Ronkonkoma, NY 11779

MECHANICAL ASSEMBLER

We are looking for Mechanical Assembler to build small/large assemblies and kits using manual and automated tools performing a variety of operations while working from blueprints, manufacturing specifications, procedures, and work instructions under limited supervision.

East/West Industries Inc.
Job No.: 000243
Manufacturing

Full-timePart-time

Ronkonkoma, NY 11779

FACILITIES MAINTENANCE TECHNICIAN - BUILDING ENGINEER

When you join us, you're joining a global team of 100,000+ connected by a shared passion with a wide spectrum of experience and skills to lead the way forward.

United Airlines
Job No.: 000229
Janitorial & Facility Services
Full-time
Newark Liberty International Airport, NJ

AIRCRAFT MAINTENANCE TECHNICIAN (JFK)

The Aircraft Maintenance Technician (AMT) is responsible for maintenance and repairs to keep aircraft working safely and efficiently.

Endeavor Air
Job No.: 000225
Aircraft Maintenance
Full-time
JFK Airport, NY

Visit our website to apply for these featured airport employment opportunities and search for additional jobs at the New York area airports. Register today to allow airport and aviation employers to match your skills with available positions. www.airportworker.com



Wien Air Alaska: First in the 49th State

Pursuing a Deregulated Path to the Lower-48

BY ROBERT G. WALDVOGEL
robertw@metroairportnews.com

First to spread wings in the 49th state, Wien Air Alaska served as a passenger and supply lifeline to remote communities, operated in geographically and climatically challenging conditions, and ultimately extended its reach to the Lower-48. But it always bore the name of its founder as it negotiated mergers and expansions throughout its six-decade history.

The name that the airline bore was Noel Wien. Born, himself, in the Lower-48—specifically in Nebagamon, Wisconsin, in 1899—or just before the turn-of-the-century and four years before the Wright brothers even demonstrated that controlled, powered, and sustained flight was even possible—he was drawn to aviation and achieved early experience when he doubled as a performer in the Federated Fliers Flying Circus.

Early Wien Airline Companies

As, perhaps, a catalyst, this experience led to the autonomous Wien Airways of Alaska in 1927 when Noel and brother Ralph acquired a Standard aircraft and supplemented it with a Stinson Detrouter, inaugurating service to the northwest communities of Candle, Deering, Kotzebue, and Point Hope.

Noel became its president and Ralph its vice president. The life of the fledgling company, however, was brief, as was that of Noel's brother. The former was sold to Avco in 1929, which combined the Bennett-Rodebaugh Company and Anchorage Air Transport to form Alaska Airways. The latter died on October 12, 1930, when the Bellanca he was flying crashed.



Wien stewardess dressed for the Arctic, Barrow, 1950

Expansion and Acquisition

Although Noel briefly flew for the new airline company, he restarted his own—and second one—in 1932. Instrumental in it was Northern Air Transport, a carrier from which it acquired early routes and equipment. The routes themselves were granted by the US Post Office for special contract mail service by steamer, automobile, and even dog team.

These so-called “Star Route contracts,” initially awarded for point-to-point service for a four-year period, had to be granted multiple times if a route entailed one or more stops. Because payments were based upon surface, dog-sled transportation in the winter and river boat means in the summer, bids had to be very low before they could even be considered.

In late 1933, rebidding became available for the period beginning July 1 of the following year, and three air carriers did so, including Pacific Alaska, Woodley Airways, and Northern Air Transport, which would

merge with Wien in 1936. It was ultimately awarded route rights north and east of Fairbanks.

The new destinations, coupled with the merger, enabled Wien to slowly expand. By the beginning of the next decade, Noel once again bowed out of the airline industry, forced to sell his shares to brother Sigurd to pay for his wife's medical bills, but would later return as a pilot and vice president.

Nevertheless, the airline acquisition that would characterize Wien's history continued: it took over Ferguson Airways on June 25, 1949, Byers Airways on July 8, 1956, and Northern Consolidated, in 1966.

The latter, an amalgamation of Roy Peterson Flying Service, Northern Airways, Walatka Air Service, and Northern Air Service that occurred on May 8, 1947, offered service in a southwesterly direction from Anchorage and Fairbanks with “28 passenger combination DC-3s and four eight-passenger combination twin-engine Cessna

Continued On Page 25



OPENINGS AVAILABLE FOR

Duty Manager and Supervisor
Office Agents • Warehouse Agents • Tractor Trailer Drivers

REQUIREMENTS & QUALIFICATIONS

Must be at least 18 years old • Must be able to lift 70 lbs. on a regular basis (Warehouse)
Valid driver's license with excellent driving record

Must Pass 10 year background check • Must have authorization to work in the U.S.

Starting Salary \$19.00+ per hour for Warehouse and Office Agents

EMAIL RESUME TO:

CPILARINOS@AGI.AERO

For immediate consideration, please stop by our JFK Facility
Delta Cargo Building 21A Room 202 between the hours of 10:00am & 1:00pm

Please bring your resume and ALL government I.D's.

Alliance Ground International provides airline cargo handling services to 55 airlines at thirteen airports: Atlanta, Chicago, Fort Lauderdale, Kansas City, LaGuardia, Las Vegas, Los Angeles, Miami, Newark, New York JFK, Orlando, Salt Lake City and San Francisco. Warehouse and ramp operations schedules are constantly adjusted to flight operations. With partners such as Cargo Force and The Cargo Security Company; Alliance Ground International can be your "one-stop-source" for all of your cargo handling needs. The culmination of years of experience with its industry partners, Alliance Ground International offers a vast range of services: Cargo Handling, Ground Handling, Mail Handling, Passenger, and Security.

WWW.AGI.AERO



YOUR JFK TRANSPORTATION PROVIDER

PROVIDING SAFE & RELIABLE TRANSPORTATION

— SINCE 1995 —



OUR SERVICES

- Airports
- Charter/Groups
- Shuttles
- Flight Crew Shuttles
- Sporting Events
- Distressed Passengers



NANCY VARGAS
Chief Executive Officer
nancy@dh2limo.com



MIKE VARGAS
Chief Operating Officer & Founder
mike@dh2limo.com

📍 79 North Boundary Road, Building 79 JFK, Suite 205, Jamaica, NY 11430

☎ (718) 928 9966 🌐 www.DH2Limo.com 📱 DH2Limo 📷 DH2Transportation 📺 DH2Transportation

Continued From Page 22

T-50 Bushmasters with wheels, skis, or floats,” according to its June-July 1955 timetable.

Major DC-3 routes from Anchorage included those to Aniak, Bethel, McGrath, and Nulato. Five years later, it had upgraded to the Fairchild F.27 propjet and was able to advertise that it “served Western Alaska from Anchorage, Bethel, and Fairbanks.”

As the US, license-built counterpart to the Fokker F.27 Friendship—the Dutch-designed, high-wing, twin-turboprop regional airliner intended to replace the ubiquitous DC-3 with greater speed and pressurized comfort—it first flew in prototype form with 1,540-shp Rolls-Royce Dart engines on November 24, 1955.

Featuring a forward, left, upward-opening cargo door and a strengthened cabin floor, the F-27B entered service with Northern Consolidated in November of 1958, offering passenger and cargo transport to all of its destinations.

The Wien merger prompted another name change—in this case, to Wien Consolidated Airlines in 1968, enabling it to introduce a blue and gold color scheme to match Alaska’s state colors. Sigurd became chairman of it. Roy Peterson of Roy Peterson Flying Service and Northern Consolidated became its president, and brothers Noel and Fritz served as board members.

Because Alaska Airlines had failed to provide adequate service between Anchorage and Fairbanks, the Civil Aeronautics Board (CAB) granted Wien Consolidated this



Alaska Airlines Constellation, circa 1966.

coveted, intra-state trunk route. It subdivided its operations into geographical groups, each of which listed the flights and stops within it, such as “Nome Bush,” “Fort Yukon Bush,” “Fairbanks Bush,” “Fairbanks-Koyukuk River Area,” “Fort Yukon Service,” “Fairbanks-Whitehorse-Juneau,” “Fairbanks-Yukon River Area,” “Nome-St. Lawrence Island,” “North Coast Area,” “Kotzebue Bush,” and “Bettles Bush.”

Wien Consolidated elevated its image when it transitioned to the jet age with the combi version of the Boeing 737-200C, emphasizing its achievement by advertising, “The biggest little airline in the world” and “Alaska’s first airline with America’s newest jet—the 737.” It deployed it on the Anchorage-Fairbanks, Anchorage-King Salmon-Fairbanks-Barrow, and Fairbanks-Galena-Nome-Fairbanks stretches.

Wien Air Alaska

On August 1, 1973, Wien refreshed its image by adopting the “Wien Air Alaska” name, introducing a primarily blue aircraft livery, and appointing Roy Peterson as its chairman, president, and CEO. The 737 became the mainstay of its jet fleet and was gravel kit-equipped for operation from unprepared surfaces. A forward, left, cargo door facilitated combination passenger and freight payload services.

In its June 1 to July 31, 1974 timetable, it billed itself as “Alaska’s first airline” and emphasized its expanding reach by stating, “From the Land of the Midnight Sun to old Russian Alaska, Wien Air Alaska offers seven of the most exciting tours (to Point Barrow, Prudhoe Bay, Nome and Kotzebue, Fort Yukon, Katima, Kodiak, and Russian Alaska and Bethel with a tundra excursion). These visits will take you to the real Alaska. You meet fascinating people, see unique places, and have the most unusual experiences.”

It denoted 737-200C equipment as, simply, “JET,” and Fairchild F-27 and FH-227 turboprop aircraft as “F7.” It also uniquely highlighted the geographical nature of certain routes, such as those between Anchorage and Barrow, with the notation “Cross the Arctic Circle.”

Three years later, it exclusively operated 737-200s on Anchorage sectors to Aniak, Barrow, Bethel, Dillingham, Fairbanks, Galena, Homer, King Salmon, Kodiak, Kotzebue (with another “Cross the Arctic

Continued On Page 26



Boeing 737-200, circa 1983.

Continued From Page 25

Circle” notation), McGrath, Nome, Prudhoe, Bay, St. Mary’s, Unalakleet, and Whitehorse, Yukon, Canada.

Although it had yet to connect Alaska with the Lower-48 states on its own, it listed 15 daily frequencies between Anchorage and Seattle operated by Alaska Airlines, Northwest Orient, and Western.

That autonomous service was subsequently listed in its June 15, 1979, timetable, in which it indicated that it offered one- or nonstop flights from Anchorage, Juneau, Kenai, Ketchikan, and Kodiak to Seattle, and to Chicago in cooperation with Northwest Orient.

Wien Air Alaska facilitated route expansion with a second pure-jet type—namely, the original, short-body Boeing 727-100, five of which it operated from May of 1981 to September of 1982, and two of which it leased from Continental Airlines in 1984, appearing in a hybrid color scheme.

It also leased four stretched 727-200s—three from Ansett Australian Airlines and one from Aerolineas Argentinas—between December 1983 and November 1984.

By mid-1982, Wien Air Alaska operated six daily 737 and 727 flights on its Anchorage to Seattle air bridge, gateway to the Pacific Northwest and intermediate stop on an increasingly expanding southwest route system, which now encompassed Portland, Boise, Salt Lake City, Phoenix, and Denver.

Expansion Into Bankruptcy

Expansion, with its aircraft, employee, and airport facility investment, is always a bet between monetary output and profitable return. In the case of Wien Air Alaska, it lost it.

In 1983, the carrier was sold to Jim J. Flood, its president, and a name change to, simply, Wien Airlines to deemphasize its Alaska-exclusive route system, was selected to reflect its Lower-48 expansion, now covering Albuquerque, Boise, Denver, Phoenix, Portland, Reno, Salt Lake City, San Francisco, and Seattle, and primarily served by its higher-capacity 727-200s.

But the overexpansion and liquidation for personal profit led to its bankruptcy declaration on November 28, 1984, and its complete service discontinuation almost a year later, on October 25.

“Wien Air Alaska was bought by a corporate raider on a leveraged buyout and was liquidated for about twice what the stock was selling for,” Merrill Wien, Noel Wien’s son, claimed at the time. “The Airline Deregulation Act of 1978 made this possible.”

“After nearly 60 years of serving Alaska passengers and freight clients and undergoing several name changes, Wien Air Alaska folded in 1985,” according to Jennifer Houdek in her article, “Noel Wien: Alaskan Aviation Trailblazer” (LitSite Alaska). “But the name Wien had (forever) become synonymous with commercial aviation in the Far North.” ■



ROBERT G. WALDVOGEL

spent thirty years working at JFK International and LaGuardia airports with the likes of Capitol Air, Midway Airlines, Triangle Aviation

Services, Royal Jordanian Airlines, Austrian Airlines, and Lufthansa in Ground Operations and Management. He has created and taught aviation programs on both the airline and university level and is an aviation author.



Airsides Jobs



Landside Jobs



Terminal Jobs



Off-Airport Jobs



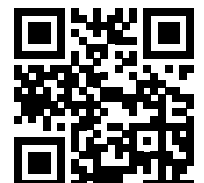
Helping job seekers find airport and aviation-related jobs that match their skills while assisting hiring managers and recruiters to locate suitable candidates.

www.AirportWorker.com

Are You Looking for a New Job?

Airport Employers Are Looking for You Too!

Register Today and Get Found.





MILES Petroleum Co. Inc.

We Keep Things Moving!

AVIATION / FLEET / INDUSTRIAL LUBRICANTS

**Free Delivery • Competitive Prices
Free Oil Analysis On Fuel Tanks & Lubricants**



ANGELA STERN
astern.mileswbe@gmail.com
Tel: (631) 767-8448

ED SULLIVAN
esullivan.mileswbe@gmail.com
Tel: (631) 767-8449

WE ENSURE YOUR CONTRACTURAL COMPLIANCE NEEDS*

Minority & Women Owned Certifications:

WBENC • ACDBE & DBE • Port Authority of NY & NJ • New York State • Nassau & Suffolk Counties



Empire State
Development



THE PORT AUTHORITY OF NY & NJ

* At the Port Authority of NY & NJ, we believe that our operations should reflect the diversity of our community. Because of this diversity, we have enacted a goal to award 20 percent of contracts to Minority-owned businesses, and 10 percent of contracts to women-owned businesses. We encourage each of our partners to also adopt these goals.

**20% participation goal with certified Minority-owned business enterprises (MBE)
10% participation goal with certified Woman-owned business enterprises (WBE)**

www.MilesOil.com

NON-REV TRAVELER

Quick Trips to Venice, Italy



BY MAUREEN KATZ
mkatz@metroairportnews.com

During my husband Jonathan's and my airline careers, there was nothing better than waking up from an overnight flight to Europe in Venice, Italy. Venice is truly "one of the seven wonders of the world," and it is so different from many places on Earth.

Venice is a city to be explored by foot, water, or gondola – where every step reveals something new; there are no cars, only canals. It boasts the world's most famous canal network, with almost 540 bridges spanning the canals. The Rialto Bridge is the oldest and most famous bridge in this city.

We have stayed in several different hotels throughout the years. One memorable hotel is the J.W. Marriott Resort and Spa, which is located on its private island. It has a water shuttle that takes about 45 minutes to arrive at St. Mark's Square, which is the center of Venice. We have also stayed at the Hilton Molina Stuckey, which is a fully restored flour mill on the Giudecca Island. It also has a private shuttle boat from Piazza San Marco.

Most recently, we discovered an excellent alternative to staying within the City of Venice at the Hilton Garden Inn Venice Mestre San Giuliano, located midway between Venice's historic center and Venice Marco Polo Airport. From the hotel, via the number 5 bus, it is a short 10-minute drive to "the steps of Venice". Another nice way of



getting to the center of Venice is by taking a water taxi directly from the airport; this trip takes about one hour.

One of the most famous Venice landmarks is St. Mark's Square. Caffè Florian is the oldest cafe in Italy and sits along St. Mark's Square, with historic buildings and Venetian architecture. It is a great place to have lunch or just a drink, and it is so European to listen to a live orchestra.

Another very popular short trip is to Murano Island with its long tradition of glass-making. The island is reached by Venice's famous water bus ferries and is about one mile north of Venice.

Lido is also a worthwhile visit while in Venice. It is an eleven-kilometer-long barrier island in the Venetian lagoon. There are water bus ferries to Lido, and they take about 14 minutes. It is best known for its beaches and the Venice Film Festival.

The best time to visit Venice is in the spring, fall, and winter. There are an overwhelming number of tourists in the summer, and it is very hot and humid. The first time we visited Venice was at the end of November on our honeymoon. The weather

was damp and chilly, but it added to the city's ambiance. While there, we stayed at the famous Hotel Danieli for \$75.00, the airline rate. Another year, we went to Venice in February and we were able to experience the famous Carnival festivities. The cold, damp, and foggy weather made it a magical experience. The Carnival is renowned for its Venetian masks. The costumes are also very interesting, as they are of the Renaissance or Baroque style.

The Ghetto of Venice, Europe's first "ghetto" and the historic Jewish quarter located in the heart of the city, should not be missed. The Venetian Ghetto still hosts religious institutions that serve Venice's Jewish community. Although there are approximately 500 people in the Jewish community of Venice, only a few reside in the ghetto, as the area has become quite expensive.

The two things that I love best about Venice are the extensive network of canals and getting lost within the endless number of its narrow streets. You will always find your way to either the Rialto Bridge or St. Mark's Square, but getting there on foot is what makes Venice special. The water bus ferries are a great way to see the highlights of the city, and they are a lot of fun. ■



Turn Waiting Time into Engaging Moments Enhance Customer Experience with Premium Print and Digital Content

Make waiting enjoyable with fast and convenient access to over 1,600 national and international newspapers and magazines in 40 languages, available on any device. No subscriptions or apps needed – just seamless integration with your IT infrastructure in your respective corporate design. Elevate your customer service effortlessly.

Contact us to learn more.

Gabrielle Sarmiento
The Traveling Press, LLC
Queens, NY 11355
Phone: 718-353-5416
Email: gabrielle.s@thetravelingpress.com
www.thetravelingpress.com
www.media-carrier.com



UPCOMING EVENTS



The most comprehensive listing of New York & New Jersey airport and aviation events available anywhere online. metroairportnews.com/ny-airport-events

📅 August 4

LAAMCO Monthly General Meeting
LaGuardia Airport-(LGA)
East Elmhurst, New York 11371
www.laamco.com

📅 August 6

JFK Airport Chamber Networking Event
Vetro Restaurant & Lounge
Howard Beach, New York 11414
jfkairportchamberofcommerce.org

📅 August 7

2025 KAAMCO Cargo Fishing Trip
Captain Pete
Freeport, New York 11520
www.kaamco.org

📅 August 11 & 25

Civil Air Patrol Falcon Squadron Meeting
John F. Kennedy International Airport
Jamaica, New York 11430
falconsquadron.cap.gov

📅 August 12

Republic Airport Commission Meeting
Republic Airport-(FRG)
East Farmingdale, New York 11735
www.republicairport.net

📅 August 13

KAAMCO Members Meeting
John F. Kennedy International Airport
Port Authority Building 14
Queens, New York 11430
www.kaamco.org

📅 August 13

JFK Airport Rotary Club Dinner Meeting
Patrizia's of Long Island
Massapequa Park, NY 11762
www.jfkrotaryclub.org

📅 August 16

C-47 Flight Experience Rides at the American Airpower Museum
American Airpower Museum,
1230 New Highway
Farmingdale, NY 11735 United States
www.americanairpowermuseum.com

📅 August 19

National Aviation Day

📅 August 21

Dan Ferrante Golf Outing
Stonebridge Golf Links & Country Club
Smithtown, New York 11787
www.dfgojfk.org

📅 September 1

JFK Airport Committee (JFKAC) Quarterly Meeting
Virtual Event
aircraftnoise.panynj.gov/nycar

📅 September 4

PANYNJ ACDBE Certification
Virtual Event
www.panynj.gov

📅 September 8

JFK Airport Rotary Club Ladies Golf Outing
Lawrence Yacht & Country Club
New York 11559
www.jfkrotaryclub.org

📅 September 9

ADDAPT Dinner Group
Heritage Club at Bethpage State Park
Farmingdale, New York 1173
www.addaptny.org

📅 September 15

Queens Chamber of Commerce Annual Golf Outing
Garden City Country Club
206 Stewart Avenue
Garden City, NY 11530
www.queenschamber.org

📅 September 16

MWBE Certification Webinar
Virtual Event
www.anewjfk.com

📅 September 18

Women in Logistics, Leadership, Mentorship, Friendship
Vetro Restaurant & Lounge
Howard Beach, New York 11414
www.jfkaircargo.aero

📅 September 18

JFK Airport Customs Brokers & Freight Forwarders Association Meeting
Russo's On the Bay
Howard Beach, New York 11414
www.jfkaircargo.aero

📅 September 22

JFK Chamber of Commerce Golf Outing
Brookville Country Club
Old Brookville, New York 11545
jfkairportchamberofcommerce.org

📅 September 24

LaGuardia Airport Committee (LGAAC) Meeting
Virtual Event
aircraftnoise.panynj.gov

📅 October 3

Our Lady of the Skies 2025 Luncheon
Crest Hollow Country Club
8325 Jericho Turnpike
Woodbury, New York 11797
www.christfortheworldchapel.org

📅 October 15

Teterboro Aircraft Noise Abatement Advisory Committee Meeting
Teterboro Airport-(TEB)
Teterboro, New Jersey 07608
aircraftnoise.panynj.gov/tanaac

📅 October 22

New York Community Aviation Roundtable (NYCAR) Meeting
Virtual Event
aircraftnoise.panynj.gov



Clean. Safe. Compliant.

Full-service cleaning and maintenance programs for airport and aviation facilities.

SIDA Badged with U.S. Customs Seals and PONYA plated vehicles at both JFK & LGA airports.

- PANYNJ Janitorial Maintenance Small Business Enterprise Certified (JMSBE)
- Pre, post, & during-construction cleaning
- Airport lounge detailing and fine cleaning
- Building and office cleaning
- Steam cleaning for all surfaces
- Carpet cleaning & restoration
- Interior and exterior window cleaning
- Building facade cleaning
- Stainless steel cleaning
- Pressure and power washing
- Interior and exterior painting
- General maintenance services
- SIDA badged AOA Janitorial Services for Airport Terminals, Offices, Warehouse, and Hangars
- Ramp, roadway, and warehouse mechanical sweeping
- Foreign Object Debris (FOD) Programs
- Best Management Practices (BMP) implementation and management
- Airport marking painting and removal
- Emergency Spill response
- Bird-dropping cleaning, Bird control installations, including netting and spikes
- Bird strike clean-up
- Catch basin cleaning
- Emergency aircraft cleaning and decontamination
- Heavy-duty equipment and vehicle pressure washing



Aqueous Solutions is a Certified MWBE Woman-Owned Business Enterprise with the Port Authority of New York & New Jersey, State of New York, and New York City

24/7 Emergency Response Hotline: 1-800-294-4950



Located at John F. Kennedy International Airport
 1-800-294-4950 • (718) 355-9080
 info@aqsolution.com • www.aqsolution.com



John F. Kennedy
International Airport

AIRTRAIN NOW 50% OFF THROUGH LABOR DAY

\$4²⁵
per trip

Avoid roadway congestion due to peak summer travel and construction activity.