



Inspect Aircraft and Cargo for Spotted Lanternfly Don't Give Them a Free Ride!



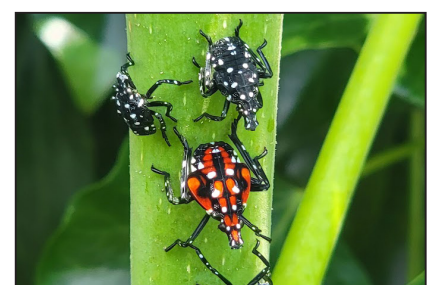
Spotted lanternfly (SLF) is an invasive insect that damages many fruit crops and trees. It's also a known hitchhiker!

Pilots and staff: Check aircraft and cargo for hitchhiking SLF before departure. Look for adult SLF in the summer. Look for egg masses (which look like smears of mud) in the fall and winter on the undersides of objects or in crevices.

Squash and kill all adult SLF. Crush egg masses and scrape them off surfaces or spray them with a high-pressure hose. Have you seen this pest? Report your findings to your State plant regulatory official: www.nationalplantboard.org/members.



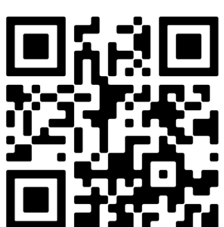
Adult SLF are approximately 1 inch long.



Nymphs on Ailanthus stem



Egg masses are approximately 1 to 2 inches long. Old egg masses (top) look like dry, cracked mud. Fresh egg masses (bottom) are white and glossy.



Learn more about SLF

(including where they are in the United States).