



METROPOLITAN
Airport NewsTM

DECEMBER 2024

The Journal of the Metropolitan New York Airport Community

Launching Pads

Wayfinding for Airport Employment
& In the Aviation Industry

Also Inside:

KIWI International Air Lines: Flightless Bird

Post-Pandemic & Hurricanes

The Island of St. Martin Is Back and Better Than Ever.

Airport Employment, Upcoming Events, & Aviation News



Work & Accident Related INJURY URGENT CARE

Employment, DOT and FAA Physical Exams
Drug and Alcohol Testing



All Testing Completed On-Site

CitiMed JFK

JFK International Airport Building 78A
78a North Boundary Road
Jamaica, New York 11430

718-656-9500

Mon - Fri 7 am to 11 pm

Sat - Sun 9 am to 4 pm

citimedny.com



PUBLISHER

Kathryn Bliss
kbliss@metroairportnews.com

EDITOR-IN-CHIEF

Julia Lauria-Blum
jblum@metroairportnews.com

CREATIVE DIRECTOR

Raymond F. Ringston
rringston@metroairportnews.com

PHOTOGRAPHER

Beverly Holder
bholderphoto@gmail.com

COMMUNITY RELATIONS

Roberta Dunn
rdunn@metroairportnews.com

ADVERTISING

Edward J. Garcia
egarcia@metroairportnews.com

EDITORIAL CONTRIBUTORS

Tanya Austin
taustin@metroairportnews.com

Maureen Katz
mkatz@metroairportnews.com

Jonathan Katz
jkatz@metroairportnews.com

Robert G. Waldvogel
robertw@metroairportnews.com

**METROPOLITAN
AIRPORT NEWS**

JFK International Airport
PO Box 300877
Jamaica, NY 11430
Tel: (347) 396-0904
info@metroairportnews.com

www.metroairportnews.com

Permissions: Material in this publication may not be reproduced, stored in a retrieval system, or transmitted in any form or by any means (electronic, mechanical, photocopying, recording, or otherwise) without the prior written permission of the publisher.

The views and opinions expressed in *Metropolitan Airport News* are those of the authors and advertisers, and do not necessarily reflect the policy or position of the publisher. Articles presented in this publication are for general information and educational purposes and do not constitute legal or financial advice.

©Copyright 2024 by Airport Media, Inc.
All rights reserved • Printed in the USA

Empire State Development
Certified MWBE
Woman-Owned Business Enterprise

New York Press Association
NYFA

Welcome to the December issue of the *Metropolitan Airport News*. This month's issue highlights the contributions that local airports make to the local economy and the community. Airports are a financial engine rooted in mass employment through every level and trade. *Metropolitan Airport News* is a strong proponent for education and employment that leads highly qualified local candidates to engage in the opportunities that are so abundant and diverse within the airport community. Major airports are like small cities that need every type of employee and service. There are fantastic opportunities for anyone who would like to work in a fast-paced environment, and our new website, **AirportWorker.com**, is an excellent resource for matching opportunities with candidates.



December is full of holiday events to enjoy, and one of the most magical events is the **JFK Airport Rotary Club Kids Party with JetBlue**. There is nothing like seeing the look on the kid's faces when they enter the JetBlue hangar. It's a spectacular event full of food, fun, gifts, and a visit from Mr. and Mrs. Claus. There are plenty of events geared toward those of you contributing to the airports' success every day. Check out the calendar to see what's happening around the airport and how to get involved.

If you would like to connect with us to offer ideas, share happenings, or introduce yourself, please email us at info@metroairportnews.com; we look forward to hearing from you.

From the team at *Metropolitan Airport News*, we wish you a safe and happy holiday season surrounded by the people you love, making memories that will last a lifetime.

I'll see you around the airports!

Katie Bliss

Katie Bliss, *Publisher*
kbliss@metroairportnews.com

Looking for a New Job?
Airport Employers Are Looking for You Too!
Upload Your Resume Today and Get Found.
REGISTER ONLINE TODAY!
www.airportworker.com



ON THE COVER

With abundant job opportunities at the airport and in aviation, many airport workforce development, training, and career resources are available in the New York metropolitan area to assist jobseekers and employers looking to hire qualified staff.

(PHOTO COURTESY OF VINCENZO PACE)

Sustainability Is At the Forefront of Everything We Do



*Proudly serving
New York and the
Tri-State area for
more than 20 years*



Get the Royal Advantage!

Compactor & Container Service
Demolitions & Clean Out
Document Shredding • Composting & More!

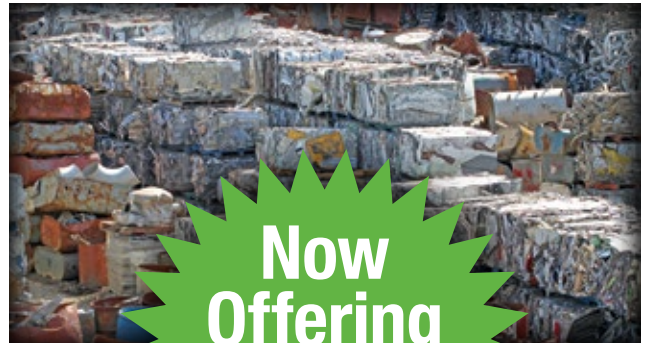
SINGLE STREAM MATERIAL RECYCLING

With the use of our Single Stream Material Recycling Facility, Royal helps to increase waste diversion rates up to 90%.

ROYAL
Waste Services, Inc.

(718) 526-2623

Call today for more information,
or to speak with a Royal Waste
Green Team Sustainable Consultant



**Now
Offering
Metal Recycling
With Rebates**

www.royalwaste.com

COMPANY SPOTLIGHT

AMA Electric Sign Co.

Illuminating New York City's Landscape Since 1999



AMA Electric Sign Co. is an established signage, display, and holiday decor provider based in New York City. The company provides custom signage solutions that enhance brands across New York, NYC, New Jersey, and Pennsylvania.

For more than two decades, AMA has provided a full range of services, from original designs through production to wiring and installation. The company's portfolio

includes LED spectaculars, holiday installations, illuminated and non-illuminated signage, interior signage, and vinyl.

The AMA crew holds riggers, master sign hangers, and New York City licensed electricians, ensuring professionals with the skills and expertise always handle every job to ensure their clients' investments last.

Whether a client has an existing concept or is starting from scratch, a design

consultation with AMA's design team provides design support that translates a client's vision into reality. Clients approve all design plans prior to fabrication, and once approved, their sign or display is built by expert fabricators using modern, durable materials for long-lasting performance.

AMA's expert technicians install all types of signage and displays, and they are licensed and trained to place a premium on safety while working efficiently to complete jobs on time, whether the sign was produced by AMA or another company.

Knowing that their customers work hard to build and express their brands and understanding that it is critical to customer experience, AMA Electric Sign Co. works to preserve and protect a client's brand image by providing continued maintenance programs and 24/7 customer support.

AMA crews maintain and support some of the world's most iconic and well-recognized signs, including Saks Fifth Avenue and Macy's NYC, Radio City Music Hall, and Times Square signage. Additionally, AMA prepares and installs all scenic elements for the Times Square New Year's Eve worldwide celebration, from the Mayor's Podium, the countdown switch, press event stages, lighting, and more.

AMA also repairs and refurbishes historic signs, maintaining their legacies with durable, energy-efficient materials, taking pride in every job, big or small, knowing that their clients trust them to make them look good. ■

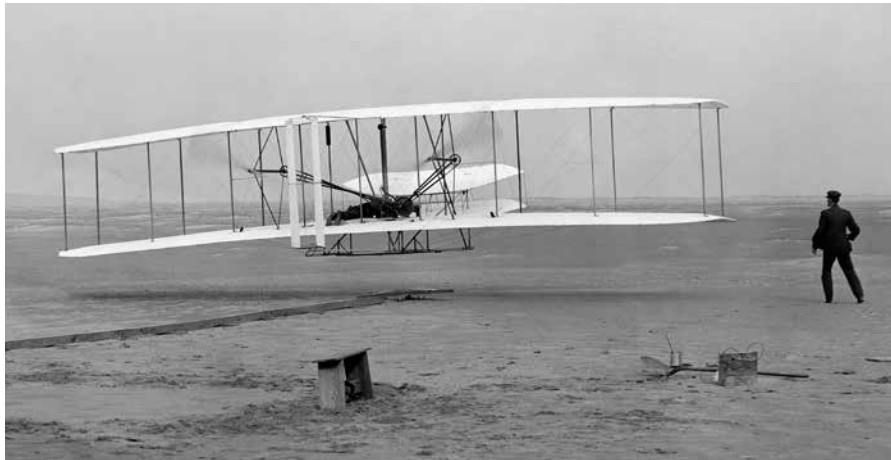
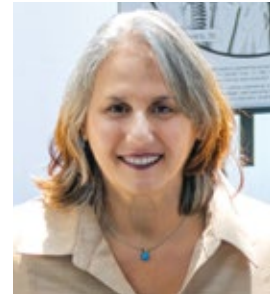


30 Warren Place
Mt. Vernon, New York 10550
Tel: (914) 530-5252

www.amaelectricsigns.com

EDITOR'S NOTEBOOK

The First Flight – Kitty Hawk, December 17, 1903



JULIA LAURIA-BLUM

Editor-in-Chief

jbllum@metroairportnews.com

One of the most famous 'aviation firsts' photographs of all time was taken by John Daniels of the Kill Devil Hill Lifesaving Station and made from a 5 x 7-inch glass-plate negative deposited in the Library of Congress in 1949.

A camera was set up on a tripod by Orville Wright, and it clearly captured the world's first powered, manned, and sustained airplane flight at the exact moment of liftoff after Orville instructed Daniels how and when to snap the shutter.

With Orville Wright at the controls, lying on the lower wing of the Wright Flyer with his hips in a movable cradle that operated the wing-warping mechanism, brother Wilbur ran alongside the machine to steady it just seconds after releasing his hold on the upright wing strut before stepping back to watch it fly.

Orville and Wilbur faced freezing temperatures, ice-covered rain puddles, and winds up to 27 mph. The first flight lasted 12 seconds and stayed aloft for a total of 120 feet. This flight was followed by three more

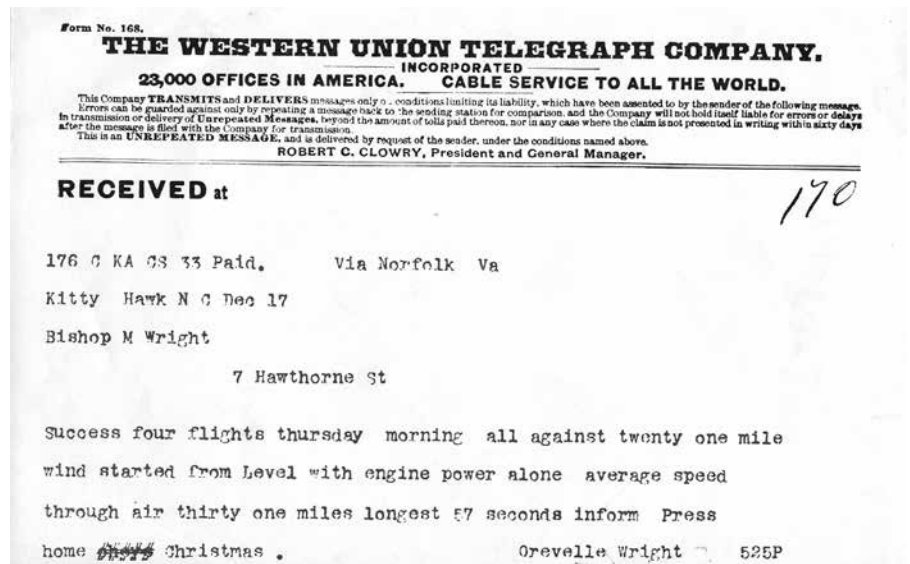
on that day, with the brothers taking turns flying. Each flight was longer than the previous flight, and the fourth and last flight of the day covered 852 feet in 59 seconds, with Wilbur at the controls. After its impressive fourth flight, the Wright Flyer was caught by a gust of wind, rolled over, and was damaged beyond repair.

Following their momentous morning and successful flight, the Wright Brothers walked to the town of Kitty Hawk to send a telegram to their father, Bishop

Milton Wright. The only telegraph operator in Kitty Hawk was a government wire at the weather bureau office, which passed the message on to Western Union. Two errors in transmission were made – Orville's name was misspelled as 'Orevelle' Wright and the time of their longest flight was 57 seconds instead of 59 seconds.

The Wright brothers famous flights on the Outer Banks of North Carolina defied the 19th Century's idea that taking to the air was a far-fetched, impossible dream – and in 12 seconds, their first flight changed the world and proved that powered flight was indeed a reality – inaugurating the aerial age.

Today, the Wright Brother Memorial at Kill Devil Hills in North Carolina is a towering, 60-foot-tall granite structure that sits atop the hill where the Wrights achieved their first momentous flight. The original Wright Flyer is permanently displayed at the Smithsonian National Air and Space Museum in Washington, D.C., an everlasting reminder of the Wright Brother's incredible feat 121 years ago on that December day in 1903. ■





THE FDU

Master of Public Administration

MPA

For Employees at Port Authority EWR & JFK Airports!

**APPLY
NOW FOR
SPRING
2025!**

To Learn More
Email: mpa@fdu.edu
Call: 201-692-7171

FDU's MPA will equip you with the managerial, analytical and conceptual skills to become a leader in your field.

- Convenient evening classes at JFK and EWR Airports
- Competitive tuition
- Expanded course options — including security, terrorism and crisis management
- Seven specializations to meet your career goals, including Global Transportation Management (JFK and EWR)
- Customizable progressive approach lets you tailor your studies

To Learn More
VISIT: fdu.edu/mpa



**FAIRLEIGH
DICKINSON
UNIVERSITY**

School of Public and Global Affairs

ON DUTY

News of promotions, appointments, and honors involving professionals within the aviation and airport communities.



Brett Kelly

HMSHost, part of Avolta AG and a world leader in creating dining for travel venues, announces the appointment of concessions industry veteran **Brett Kelly** as Vice President of Business Development for food and beverage across North America. A seasoned and respected senior executive in aviation and hospitality, Kelly will play a crucial role in HMSHost's growth as a leadership team member charged with winning and retaining airport contracts, maintaining landlord relations, and improving portfolio real estate values across nearly 80 airports in North America.



Klaus Goersch

Atlas Air Worldwide Holdings, Inc., announced **Klaus Goersch's** appointment to Executive Vice President and COO. Mr. Goersch will report to Michael Steen, Chief Executive Officer, Atlas Air Worldwide, and will serve as an Executive Leadership Team member. Joining the company in late December, Mr. Goersch will oversee Atlas' global flight, ground and technical operations, directly responsible for safety, regulatory compliance and operational excellence.



Michael Rousseau

Michael Rousseau, President and CEO of **Air Canada**, has been elected as the new Chairperson of the **Star Alliance** Chief Executive Board (CEB). He succeeds Scott Kirby, CEO of United, who held the post since December 2020. Assuming the role as the Chairperson, Mr. Rousseau said: "I am looking forward to working with the board over the next two years to continue our progressive work in delivering a seamless customer experience. At Star Alliance, we are committed to the vision of an effortlessly connected world, and I invite every member of our Alliance to join me in making this vision a reality in 2025 and beyond."

In his new role of the largest airline alliance in the world, Mr. Rousseau will lead the two annual board meetings and serve as the spokesperson for the board, guiding the strategic direction of the Alliance, which consists of 25 global member airlines.

Star Alliance CEO **Theo Panagiotoulis** said: "I am delighted to welcome Michael Rousseau, one of the most seasoned CEOs on the board, as the new Chairperson and look forward to working closely with him as we bring the renewed vision of the Alliance to fruition. I also extend my heartfelt gratitude to **Scott Kirby** for his guidance and support to Star Alliance during his successful four-year term." ■



Turn Waiting Time into Engaging Moments Enhance Customer Experience with Premium Print and Digital Content

Make waiting enjoyable with fast and convenient access to over 1,600 national and international newspapers and magazines in 40 languages, available on any device. No subscriptions or apps needed – just seamless integration with your IT infrastructure in your respective corporate design. Elevate your customer service effortlessly.

Contact us to learn more.

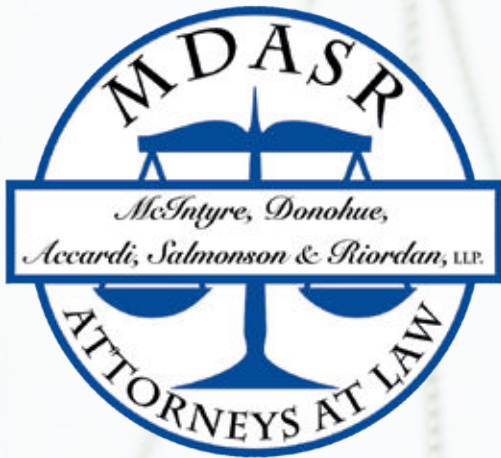
Gabrielle Sarmiento
The Traveling Press, LLC
Queens, NY 11355
Phone: 718-353-5416
Email: gabrielle.s@thetravelingpress.com
www.thetravelingpress.com
www.media-carrier.com



Continued on Page 26

THE LAW OFFICES OF MCINTYRE, DONOHUE, ACCARDI, SALMONSON, & RIORDAN, LLP

PROTECTING YOUR RIGHTS. SECURING YOUR FUTURE.



SPECIALIZING IN:

WORKERS' COMPENSATION
SOCIAL SECURITY DISABILITY
3/4'S DISABILITY PENSION

HURT AT WORK?
CALL US TODAY!

866.557.7500

PROTECTING WORKERS THROUGHOUT NY STATE

CALL US TODAY FOR A FREE CONSULTATION!



inquire@licomplaw.com



licomplaw.com



Launching Pads

Wayfinding for Airport Employment & In the Aviation Industry

VINCENZO PACE

JULIA LAURIA-BLUM
jblum@metroairportnews.com

Airports are vital not only for their principal function of air transportation, but also to the region that they are located in and the communities that surround them. As centers of economic activity, airports have a significant economic impact within a region by supporting and enabling the movement of people and goods, stimulating local businesses through tourism, attracting investment and businesses to an area, and generating employment directly within the airport itself and indirectly through jobs created by businesses that service the airport and its travelers.

In the recently published New York State Department of Transportation (2024) Economic Impacts of New York State Airports and Aviation Executive Summary: The New York Airport System is an economic engine supporting the New York State economy. Its system of 131 public-use airports provides a critical component of access to communities and regions across the State. New York's significant investment in our airports has also allowed them to outpace other industries.

The State's commitment to airport development and strategic investments has positioned New York on an upward trajectory in aviation and overall economic impact. The aviation sector of New York's economy grew by \$30 billion over the last 10 years. New York (State) airports support

more than 454,000 aviation-related jobs, which are high-paying and outperform many jobs in other sectors of the economy.

The Port Authority of New York and New Jersey operates the largest airport system in the United States and is the largest network of airports in the world. They include John F. Kennedy International, Newark Liberty International, LaGuardia Airport, Teterboro Airport, and New York Stewart International Airport.

The following statistics, reported in the Port Authority's 2023 Airport Traffic Report, speak to the Port Authority's commitment to provide the NY metropolitan region with incomparable global access, restoring the region to the pre-eminent status of America's gateway to the world.

JFK International Airport (JFK) has been recognized for decades as the premier U.S. gateway for passengers and cargo. JFK is the busiest airport in the New York City metropolitan area and among the busiest in North America and the world. In 2023, the airport served 62.5 million passengers and handled 1.6 million tons of cargo. About 40,500 people are employed at the airport. The airport contributes about \$45.4 billion in economic activity to the New York-New Jersey metropolitan region, supporting nearly 238,000 total jobs and more than \$19.1 billion in annual wages.

Newark Liberty International Airport (EWR) is among the busiest North American and international airports. In 2023, Newark served a record 49.1 million passengers and handled 690,000 tons of air cargo. About 23,000 people are employed at Newark Airport. The airport contributes more than \$29.2 billion in annual economic activity to the New York-New Jersey metropolitan region, supporting more than 137,000 total jobs and nearly \$12.5 billion in annual wages.

LaGuardia Airport (LGA) is one of the nation's leading domestic gateways for business and leisure travel and is the primary business/short-haul airport for New York City. LaGuardia Airport, which, relative to its size, has held the distinction of being the most efficient airport in the world by handling more passengers per acre per year than any other airport, and served a record 32.4 million passengers in 2023. LaGuardia Airport employs about 15,800 people and plays a critical role in addressing the region's transportation needs and fueling the economy. The airport contributes more than \$13.6 billion in economic activity to the New York-New Jersey metropolitan region, supporting nearly 62,000 total jobs and more than \$6 billion in annual wages.

Stewart International Airport (SWF) employs about 1,200 people. Airport activity contributed \$134 million in economic activity to its region, supporting more than 800 additional jobs and \$59 million in annual wages. Half the capital projects initiated by the Port Authority have been awarded to local firms and contractors. A \$100 million project that rehabilitated and modernized both runways was completed in mid-2015, representing the largest



investment ever made in a single project in Stewart Airport's history. Since the Port Authority took over the airport in November 2007, it has invested about \$220 million to make improvements.

Teterboro Airport (TEB), designated as a reliever airport for general aviation in the New York-New Jersey region, is a 24-hour public-use facility that offers visual, non-precision, and all-weather precision landing capabilities. The airport does not permit scheduled commercial operations and prohibits aircraft operating with weights in excess of 100,000 pounds. Teterboro Airport supports more than 5,000 jobs, paying \$362 million in annual wages, and generates nearly \$1.2 billion in annual sales activity.

There is a wide range of employment opportunities within the Port Authority, including airport operations, aeronautical services, policy analysis, transportation services, contract management and program management, and more.

A listing of the Port Authority's current career opportunities in aviation and across all of its sectors can be found at www.jointheportauthority.com

As a whole, both large commercial, municipal, and general aviation airports create a diverse array of almost unlimited employment opportunities, both on-site at the airport and off-site in the surrounding

locale, that includes airport management, air traffic control, positions in the airline industry, airport and aircraft dispatch, customer service representatives, maintenance, janitorial and manual labor, technical positions, U.S. Customs, TSA and security roles, freight forwarders, caterers, retail, food service and concessions, ground and transportation attendants, and charter operations.

When considering employment at an airport or a career path in aviation, there are many ways to enter the industry. With the unlimited job opportunities offered, the choice of what path to take or where to begin the process may be overwhelming at first. Still, many airport workforce development and career resources are available here in the New York metropolitan area to assist jobseekers and employers looking to hire qualified and responsible staff.

Airport Worker is an online resource (www.airportworker.com) provided by *Metropolitan Airport News* that helps job seekers find airport and aviation-related job openings that match their skills and location while assisting hiring managers and recruiters in locating suitable job candidates. Jobseekers can register for a free account on Airport Worker that allows them to post their resumes, allowing aviation and airport company HR professionals to

Continued On Page 12

Continued From Page 11

search for job candidates with specific skills. Employers and HR professionals can register for a free account that enables them to post unlimited job listings and the choice to upgrade to Premium for unlimited access to job seeker resumes.

The **Council for Airport Opportunity (CAO)** (www.caonynj.com) was established in 1972 when there were very few workforce development programs and none that were sector-focused like the CAO. The mission of the CAO is to connect local job seekers to employment opportunities at the Port Authority's airports. At the same time, the CAO is responsible for ensuring that airport employers receive the most qualified candidates in a timely and efficient manner.

Andrew Campbell is the Executive Director of the CAO NY & NJ and spoke of some of the most critical hiring needs today at the New York metropolitan region's airports and in the aviation industry. "Every job at the airport is critical. The airport doesn't function well unless all of the staff are performing at a high level. We do have a more difficult time sourcing CDL driver positions. There is a nationwide CDL driver shortage, and we feel that here at our airports. At CAO, we work with different training schools and our community-based organizations to source qualified candidates for these roles."

Two new initiatives that have significantly benefited the community are CAO's satellite offices and the Office of Second Chance Employment (OSCE) program. Mr.



The Council for Airport Opportunity hosted an aviation job fair at York College in Jamaica, NY, connecting local companies with job seekers for available positions at New York airports.

Campbell discussed how the satellite offices have played a vital role in bringing airport job opportunities close to local residents. As part of the LaGuardia Airport and John F. Kennedy International Airport's redevelopment programs, CAO opened smaller offices in Corona and Far Rockaway.

These convenient locations make it easier for residents who live adjacent to LaGuardia and JFK Airports to learn about and pursue career opportunities available at the airports.

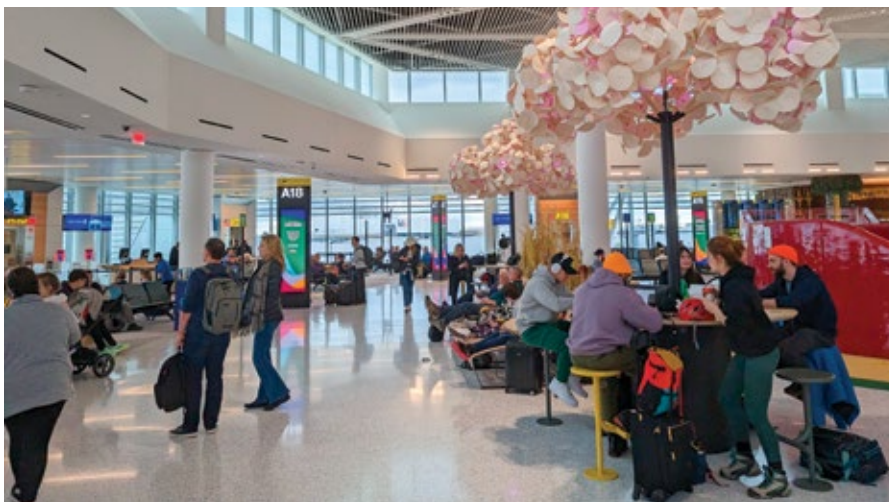
"The **Office of Second Chance Employment (OSCE)** program has made a

profound impact on individuals affected by the criminal justice system. This initiative provides pathways for these candidates to access meaningful employment opportunities at our airports. Together, these programs have been instrumental in helping CAO achieve its mission of connecting the community with valuable job opportunities," said Campbell.

In order to initiate their job search, Campbell said, "I encourage all prospective job seekers to visit our website at www.caonynj.com. On the Job Seeker Services page, you can register with CAO. Once registered, a CAO representative will contact you to schedule an appointment at one of our offices. We ask that you bring a resume and identifications, if possible, and dress professionally for your appointment."

During the meeting with the CAO representative, Campbell explained that job seekers will have the opportunity to discuss their career goals and explore potential employment opportunities with the representative, "If you qualify for one of our open positions, we will connect you with one of our airport employer partners. Should you need additional support, we are committed to providing the resources and guidance necessary to help you become a successful candidate," added Campbell. ■

Continued On Page 14



Interior of the Terminal A at Newark Liberty International Airport.



Happy Holidays

from Our Family
to Yours



ASAK

ONE OBJECTIVE. YOURS.

FOR FURTHER INFORMATION VISIT US AT ASAK.AERO

GROUND HANDLING • AIRCRAFT ANCILLARY SERVICES
CARGO & MAIL HANDLING • GSE MAINTENANCE
SNOW REMOVAL & DE-ICING SOLUTIONS

CUNY Aviation Institute at York College

Located between the two busiest airports in New York (JFK and LaGuardia), York College is an educational institution that is part of the City University of New York (CUNY) system. The CUNY Aviation Institute at York College serves as the interface between the School of Business and Information Systems at York College and the aviation industry and offers a bachelor's and master's degree program in Aviation Management. The programs are designed to prepare graduates who will assume leadership roles in the global aviation industry and related fields, as the College collaborates with the public and private sectors to work on research projects and helps its students find internships and permanent jobs in the aviation industry.

At York, students have opportunities for involvement in many aspects of aviation life, including participation in major aviation conferences across the country, volunteering for airline special occasions, collaborating in research with the faculty, and attending luncheons and galas to network with industry leaders.

Separate from a bachelor's program in Aviation Management, York College offers a non-degree FAA Dispatcher Certificate program, for which only a high school diploma is required. The dispatcher certificate program is something like continuing education that can be taken from outside. Those interested in the certificate program do not have to be enrolled as a York student.

The FAA Dispatcher Certificate program is a two-year, four-semester, 4-course (16 credit hour) series of instructions that allows students to sit for the Federal Aviation Administration Aircraft Dispatch certificate exam. The program requires the completion of four classes, which are outlined at <https://www.york.cuny.edu/business-economics/faa-dispatcher-certificate-program-application>

York students may take the four courses as an elective for credit and declare it as a minor, but should they want to qualify for the FAA dispatcher exam, they must meet FAA requirements that are above and beyond the course requirement for receiving credit at York.

Specifically, if taking the course in order to be FAA certified, you must pass each course in sequence with a higher average than required to pass the course for credit. A minimum of 85% overall and 85% and up on the final is required to move on to the next class in the sequence. If taking the



class as an elective for credit toward graduation, standard grading applies.

When sitting for the written and practical exams, you must be a minimum of 21 years old.

Once the written exam is completed, the test score is valid for two years from the date of the examination. The age requirement for certification is 23, but the FAA will allow you to work under (Weight and Balance section or Crew Scheduling) supervision until the age of 23 is reached.

Licensed dispatchers are employed by airlines to manage the ground-based tasks vital to a successful airline flight, including pre-flight planning and preparation, weather variations, traffic delays, and other information necessary to the crew and other staff. Aircraft dispatchers share with pilots the ultimate responsibility for a flight's commencement and completion. The dispatcher certification is very valuable in that dispatchers earn above-average wages and are in high demand, with some salaries starting in the six figures.

The dispatcher plays a vital role in helping airplanes safely travel from one location to another "It is pretty serious work," said **Shehla Iftekhar**, Academic & Career Advisor, Aviation Management at York. Ms. Iftekhar, noted that November 1st is World Dispatcher's Day and that York is the only New York State school that offers the dispatcher certification course, adding, "It's our pride and glory, that we have this program."

Working as a team with **Denecia Marshall**, Academy Internship Specialist at York College, Shehla Iftekhar and Ms. Marshall offer students access to tailored advisement and career support and a dedicated team of aviation industry specialists to mentor them during their college days in the Aviation Management program and beyond. For more information about the program call (718) 262-2502 or email sift-ekhar@york.cuny.edu or dmarshall@york.cuny.edu



OPENINGS AVAILABLE FOR

Duty Manager and Supervisor
Office Agents • Warehouse Agents • Tractor Trailer Drivers

REQUIREMENTS & QUALIFICATIONS

Must be at least 18 years old • Must be able to lift 70 lbs. on a regular basis (Warehouse)
Valid driver's license with excellent driving record

Must Pass 10 year background check • Must have authorization to work in the U.S.

Starting Salary \$19.00+ per hour for Warehouse and Office Agents

EMAIL RESUME TO:

CPILARINOS@AGI.AERO

For immediate consideration, please stop by our JFK Facility
Delta Cargo Building 21A Room 202 between the hours of 10:00am & 1:00pm

Please bring your resume and ALL government I.D's.

Alliance Ground International provides airline cargo handling services to 55 airlines at thirteen airports: Atlanta, Chicago, Fort Lauderdale, Kansas City, LaGuardia, Las Vegas, Los Angeles, Miami, Newark, New York JFK, Orlando, Salt Lake City and San Francisco. Warehouse and ramp operations schedules are constantly adjusted to flight operations. With partners such as Cargo Force and The Cargo Security Company; Alliance Ground International can be your "one-stop-source" for all of your cargo handling needs. The culmination of years of experience with its industry partners, Alliance Ground International offers a vast range of services: Cargo Handling, Ground Handling, Mail Handling, Passenger, and Security.

WWW.AGI.AERO

AIRPORT EMPLOYMENT OPPORTUNITIES

CUSTODIAN

We have an immediate opening for a custodian who wants to deliver exceptional customer satisfaction. We are looking for custodial members who have strong customer service skills and can work successfully with other team members.

SBM

Job No.: 000228

Janitorial & Facility Services

Full-time

New York, NY 10001

OPERATIONS MANAGER - MIT

The Operations Manager will assist with coordinating and directing operations necessary to carry out contractual responsibilities between SBM and customers, including any and all necessary planning, supervision, budgeting, vendor and supply contact.

SBM

Job No.: 000227

Janitorial & Facility Services

Full-time

Queens, NY, NY 11430

ASSISTANT SITE MANAGER

The Assistant Site Manager will be responsible for directing company programs and implementing company policy to ensure total compliance with contract duties between company and customer by performing the following duties personally or through subordinate managers and/or supervisors

SBM

Job No.: 000226

Janitorial & Facility Services

Full-time

Queens, NY, NY 11430

AIRCRAFT MAINTENANCE TECHNICIAN (JFK)

The Aircraft Maintenance Technician (AMT) is responsible for maintenance and repairs to keep aircraft working safely and efficiently.

Endeavor Air

Job No.: 000225

Aircraft Maintenance

Full-time

JFK International Airport, NY

FLIGHT ATTENDANT (LGA)

Endeavor Air Flight Attendants provide a safe and memorable on-board experience for every customer, every day, on every flight by creating a warm and welcoming environment for our guests.

Endeavor Air

Job No.: 000224

Passenger Services

Full-time

LaGuardia Airport, NY

CARGO PHYSICAL SECURITY SPECIALIST (JFK)

A Cargo Physical Security Specialist focuses on safeguarding cargo during transport, storage, and handling. Our unarmed security officers are at the forefront of homeland security, safeguarding infrastructure and ensuring seamless and secure operations.

Global Elite Group

Job No.: 000211

Airport Security

Per Diem

JFK International Airport, NY

TECHNICAL SUPPORT CONTROLLER

The Technical Support Controller monitors fleet performance daily and provides recommendations for preventative maintenance, ongoing troubleshooting, and/or aircraft recovery.

JetBlue

Job No.: 000222

Flight Operations

Full-time

JFK International Airport, NY

COORDINATOR MAINTENANCE CONTROL

The Maintenance Control Coordinator is responsible for supporting and assisting the Maintenance Controllers and Duty Managers. This Coordinator will provide administrative duties, including email communications, set up of conference calls, and data collection for daily reports.

JetBlue

Job No.: 000221

Flight Operations

Full-time

Long Island City, NY 11101

COORDINATOR- AIRPORT OPERATIONS CENTER

We are in search of an ambitious and proactive coordinator that will provide support to our Airport Operations with handling personnel sick calls, operational coverage, and daily coverage reporting.

Global Elite Group

Job No.: 000215

Airport Security

Full-time

Garden City, NY 11530

HUMAN RESOURCES ASSISTANT

This is a local based role out of NYC.

You will be responsible for providing administrative support to the HR department on all personnel matters to ensure accurate and timely processing in accordance with local legislation and QR policies.

Qatar Airways Group

Job No.: 000218

Office & Administrative Support

Full-time

New York, NY 10118

HUMAN RESOURCES MANAGER

The HR Business Partner effectively builds relationships and serves as the liaison between leadership, employees, shared services, and human resources departments to design, execute, communicate, and monitor human resources initiatives and programs across business lines.

Unifi Aviation Services

Job No.: 000208

Office & Administrative Support

Full-time

Jamaica, NY 11430

FLIGHT ATTENDANT (JFK)

Endeavor Air Flight Attendants provide a safe and memorable on-board experience for every customer, every day, on every flight by creating a warm and welcoming environment for our guests.

Endeavor Air

Job No.: 000223

Passenger Services

Full-time

JFK International Airport, NY

AIRPORT EMPLOYMENT OPPORTUNITIES

REGIONAL AIRPORT SERVICES MANAGER

The role is responsible for ensuring that the Airport and other airport operations under your jurisdiction run smoothly, cost-effectively, and in accordance with safety and security requirements.

Qatar Airways Group
Job No.: 000217

Airport & Terminal Operations
Full-time

JFK International Airport, NY

CARGO SALES MANAGER

As the business expands, we are pleased to announce an incredibly exciting opportunity to join our Cargo Sales Team in JFK as a Cargo Sales Manager.

Qatar Airways Group
Job No.: 000219

Cargo Handling
Full-time

JFK International Airport, NY

RECRUITER- AVIATION SECURITY COMPANY

In this position, you will manage full-cycle recruiting for various positions within the head office and outer stations of an ever-growing Aviation Security Company.

Global Elite Group
Job No.: 000216

Office & Administrative Support
Full-time

Garden City, NY 11530

SENIOR ANALYST CREW PAIRING OPTIMIZATION

The Senior Analyst will perform data analysis, data quality assurance, and ad hoc projects that enable system robustness and achievable Key Performance Indicators (KPIs).

JetBlue
Job No.: 000220

Flight Operations
Full-time

Long Island City, NY 11101

AVIATION SECURITY OFFICER

Our unarmed security officers are in the forefront of homeland security, ensuring seamless and secure operations in many of the largest and busiest airports in the country.

Global Elite Group
Job No.: 000214

Airport Security
Full-time/Part-time

JFK International Airport, NY

JFK PASSENGER SERVICE SUPERVISOR - AEROMEXICO

Passenger Service Agents are the first line of defense for our customers! This is a customer-facing role, providing first-class customer service to everyone.

Unifi Aviation Services
Job No.: 000207

Passenger Services
Full-time

JFK International Airport, NY

SCREENING SPECIALIST - CHARTER AVIATION SECURITY

Are you looking for an exciting career in the security field with an opportunity to work alongside the biggest names in sports & entertainment?

Global Elite Group
Job No.: 000213

Airport Security
Per Diem

Garden City, NY 11530

GROUND SERVICE EQUIPMENT UTILITY SPECIALIST

The GSE Utility Specialist plays a very important role in providing quality service to our internal customers and performs work in accordance with guidelines established in the collective bargaining agreement.

United Airlines
Job No.: 000205

Ground Handling
Full-time

Newark Liberty
International Airport, NJ

OPERATIONS MANAGER (JFK AIRPORT)

Our security team is on the forefront of homeland security, safeguarding infrastructure and ensuring seamless and secure operations in many of the largest and busiest airports in the country.

Global Elite Group
Job No.: 000212

Airport Security
Full-time

JFK International Airport, NY

JFK PASSENGER SERVICE AGENT - JAL

This is a customer-facing role, providing first-class customer service to everyone. You are friendly, outgoing, and love to make people happy daily.

Unifi Aviation Services
Job No.: 000203

Passenger Services
Part-time

JFK International Airport, NY

TERMINAL SECURITY OFFICER

Our team members are in the forefront of homeland security, safeguarding infrastructure and ensuring seamless and secure operations in many of the largest and busiest airports in the country.

Global Elite Group
Job No.: 000210

Airport Security
Full-time

LaGuardia Airport, NY

JFK PASSENGER SERVICE SUPERVISOR - AIR CANADA

Unifi Customer Service Agents are the first line of defense for our customers. This is a customer-facing role, providing first-class customer service to everyone. You are friendly, outgoing, and love to make people happy daily.

Unifi Aviation Services
Job No.: 000204

Passenger Services
Internship

JFK International Airport, NY

Visit our website to apply for these featured airport employment opportunities and search for additional jobs at the New York area airports. Register today to allow airport and aviation employers to match your skills with available positions. www.airportworker.com



KIWI International Air Lines: Flightless Bird

How a Flightless Inspiration Came Full Cycle

BY ROBERT G. WALDVOGEL
robertw@metroairportnews.com

Both birds and airplanes attain lift with wings. But one of the former species has none at all and is therefore flightless. When airlines fail, they, too, join the grounded pack. This, in essence, was the concept that gave rise, and ultimate fall, to KIWI International.

Flightless Bird

Like a string of dominoes, once-mighty carriers whose failures were initially never conceivable suffered that very fate. One of them, of course, was Eastern, which ironically adopted “The Wings of Man” campaign to lure passengers, yet its own were eventually severed.

While some, harnessing the forces of deregulation, attempted a comeback, others tied together their remnants and retook to the sky under new names. And while their purposes varied, Eastern’s version was practical--that is, employment--specifically for the pilots, flight attendants, managers, and others after its bankruptcy caused its demise.

Banding together to pose solutions to their situation, mostly Newark-based pilots identified themselves as “kiwis”—that is, flightless birds who sought to regain wings



A Kiwi Boeing 727-200 landing at Newark International Airport in 1994

and, with them, a paycheck.

More formally designated the “Kiwi Acquisition Group,” those in search of work initially considered purchasing the Pan Am Shuttle for \$100 million, but the offer was rejected in favor of Delta’s.

If they could not find a carrier to employ them or acquire an existing one, they ultimately elected to start their own. Some 40 pilots, in fact, each threw \$50,000 into the pot and selected the KIWI name to reflect the situation which gave its rise.

“Regarding our name, one may, at first, think of a tin of shoe polish,” it advertised. “Naw. How about a fuzzy piece of fruit with wings? Not exactly. Our KIWI identifies most with the flightless bird native to New Zealand and, while you now know where we got the name, you still may not know why.

“The owners of KIWI started with a dream. Most of us who now call ourselves KIWIS were previously employed by carriers that were grounded and no longer exist. We lost our wings and subsequently realized that our situation was similar to the plight of the Kiwi bird. What would be a more appropriate name for an airline that gave back the power of flight to so many people?”

Winged Bird

As an employee-owned carrier, the resultant KIWI International Air Lines gave out-of-work professionals the opportunity to be a part of something and not simply work for something.

“We dared to believe that experienced and knowledgeable employees, good service, quality food, and reasonable prices would make us successful,” they claimed.

Inaugurating service from a Newark hub with a pair of former Lufthansa Boeing 727-200s in a six-abreast, 36-inch-pitch, single-class configurations on September 21, 1992 to Atlanta, Chicago-Midway, and Orlando, it structured itself with several unique aspects. These, combined into what it dubbed “Kiwi Class,” included low fares, the elimination of minimum-stay and advance-purchase requirements, seat selection and boarding pass issuances, increased leg room, award-winning food service, and a 20-year employee foundation.

The following year, it added San Juan and Tampa to its route system, offering two daily roundtrips to each of its destinations.

An early interline agreement with Virgin

Continued On Page 21





JFK Airport Shuttle Bus Driver Opportunities

\$25.13/hr

Location: New York Career Center
90-04 161st Street, #201
Jamaica, NY, 11432

Date: Tuesday, December 31, 2024

Time: 9:00AM - 2:00PM

Save time! Scan to register with CAO before the event



<https://ow.ly/X8cU50Q3gwT>

Walk-Ins welcome!

Qualifications

- Must be 21 years of age or older
- Must have valid CDL Class B or A License with Passenger Endorsement
- Must be willing to work a flexible schedule
- Customer Service Experience preferred

All applicants must present:

- Social Security Card (unlaminated)
- State Driver's License, Learner's Permit, or Non-Driver's ID
- Working Documents Required
- Will be Drug Tested (cannabis included)



Business attire recommended



Masks recommended



Please practice social distancing

New York Career Center

Follow us on Social Media

 (718) 523-7100

 www.caonynj.com



THE TIDES
AT ARVERNE BY THE SEA

Now Leasing

We are only
20 Minutes
to JFK

Discover a new wave of living
with incredible beachfront rental residences.
The Tides is a combination of amenity-rich,
modern living in a convenient location near the city & ocean.



- ~ Fitness Center ~ Rooftop Pool & Sundeck
- ~ Grilling Stations ~ Game Room ~ Movie Theater
- ~ Indoor Lounge ~ Work Spaces ~ Catering Kitchen
- ~ Concierge Services ~ Secure Package Delivery
- ~ Steps from the Beach



Studio, 1, 2 & 3 Bedroom Apartments
Priced from \$2,750* to \$5,000* per month

tidesnyc.com | 347-808-4020

OPEN DAILY 10 am - 5 pm

6804 Tides Road, Arverne, NY 11692 (Arverne by the Sea A train stop)

*Prices and availability are subject to change without notice. Actual onsite photos shown. Equal Housing Opportunity.



**MAKE SURE TO ASK ABOUT SPECIAL INCENTIVES
FOR AIRPORT & AIRLINE WORKERS**

www.tidesnyc.com

Atlantic provided transatlantic connections in Newark and Richard Branson, the carrier's owner, promoted KIWI by stating that it was his "favorite airline." Conde Nast Traveler named it the "best airline in America."

Seeking to incorporate the service elements that other carries had begun to shed, it advertised that inflight meals were "something to be enjoyed and not paid extra for."

"As you can see from our beverage menu, all of our liquor choices are top-shelf quality—a cut above the ordinary. For us, it is business as unusual."

It even invented its own beverage—California Quake.

"At KIWI International Air Lines, we are dedicated to providing you with the finest products available," it stated. "For example, our new soft drink, California Quake, is made with real fruit and pure sparkling water. It contains no artificial sweeteners, preservatives, additives, color, or caffeine, and is low in sodium."

Like many deregulation carriers, the once-flightless bird sought to carve a non-threatening niche in the sky by avoiding competition, adopting a simplified fare structure, eliminating price wars, and minimizing market share encroachment into the major carriers' turf with a small route system and only a handful of daily frequencies to the cities it served.

Throughout its history, they included, at various times, Atlanta, Boston, Chicago, Las Vegas, Miami, Newark, Orlando, Tampa, and West Palm Beach in the US, and Aguardilla, Aruba, Bermuda, San Juan, and St. Maarten in the Atlantic and the Caribbean.



JOHN M. WHEATLEY

Kiwi Airbus A320 at Perth Airport

Clipped Wings

KIWI's success was founded upon employee ownership and its ability to plug the service concept gaps other carries had increasingly created. But, behind most theories, there were several realities that worked in its disfavor. The first of them was the human one.

Robert Iverson, its first chairman, CEO, and president, mismanaged the company and appointed his old crony pilots, who may have had flying skills, but lacked leadership ones.

"One of the stupidest things I ever did was call everybody owners," he once said in a New York Times interview. And he himself had never managed as much as a baggage carousel.

The carrier's second obstacle occurred when the FAA grounded its fleet because of pilot training irregularities, resulting in significant revenue loss.

"By 1994, the carrier was struggling financially, reporting a loss of \$14 million," according to Lee Cross in his article, "KIWI International Launches Flights" (Airways,

September 21, 2024). "Several of the airline's top management members were ousted in an attempt to turn around its fortunes."

Yet a third factor in its misfortune entailed the now-familiar David-versus-Goliath one: the incumbent carries lowered their fares to retain market share on routes in which they competed, and KIWI proved no match for their size and the destination opportunities their frequent flyer programs offered.

Despite KIWI's own late attempt to introduce such a loyalty program, its fate had been sealed. New owners and investors, route realignments, and sporadic service starts and discontinuations all led to its initial 1996 Chapter 11 bankruptcy filing and \$17.8 million loss two years later.

Flightless Bird Again

KIWI's lofty vision ultimately collided with airline industry reality in deregulated skies, clipping its wings and once again rendering it just as flightless as the bird which had served as its inspiration and given it its initial rise. ■



ROBERT G. WALDVOGEL

spent thirty years working at JFK International and LaGuardia airports with the likes of Capitol Air, Midway Airlines, Triangle Aviation Services, Royal Jordanian Airlines, Austrian Airlines, and Lufthansa in Ground Operations and Management. He has created and taught aviation programs on both the airline and university level and is an aviation author.

JOHN M. WHEATLEY



Kiwi Boeing 737-300 at Perth Airport

AIRPORT BRIEFS

“Dropping of the Roses” Pearl Harbor Memorial Ceremony

Hosted by the Long Island Air & Space Force Association
at the American Airpower Museum

On December 7, 2024, the 83rd anniversary of the Japanese attack on the U.S. Naval Fleet at Pearl Harbor, a ceremony was held at the American Airpower Museum at Republic Airport remembering all who served and those who perished at Pearl Harbor on December 7, 1941, ‘A date which will live in infamy’.

The “Dropping of the Roses” event featured a vintage World War II AT-6D Texan, which took off at 12:30 p.m. from Hangar 3 at the Museum and flew to the Statue of Liberty to drop off 83 American Beauty Roses (including one extra white rose for 9/11) at the exact time in New York to commemorate the attack on Pearl Harbor.

Preceding the ‘Dropping of the Roses’, the public observed a solemn ceremony in remembrance of Pearl Harbor, including the honoring of WWII veterans, plus a Color Guard from the Navy Reserves and veterans’ organizations.

During the observation, a Chaplain blessed the roses as Taps was played, and the roses were presented to the pilot of the AT-6 before its departure from the American Airpower Museum’s ramp. ■



JFK Airport Rotary Club Kicks Off the Holiday Season

The JFK Airport Rotary Club kid’s holiday party hosted at the Jet-Blue hangar welcomed 450 students from local schools in Queens. The annual event brings in 4th-grade classes from the surrounding schools for a fun-filled event that the kids will never forget! They are welcomed with gifts, snacks, and a live band and DJ from the second they arrive.

The kids love spending time with partners from EMTs from Jamaica Hospital, Port Authority Police and Fire (ARFF), TSA, and CPB, all showing the kids what’s possible at the airport in their backyard. The working dogs are always a big draw for the kids, as are

the M&M’s Characters, the Disney Princesses, and the clowns that are all there to entertain. The day’s highlight is Santa and Mrs. Claus, supported by their cheerful elves, coming off a long flight from the North Pole on a beautiful JetBlue aircraft at JFK Airport. All the kids leave the event full of gifts and cheer for a wonderful start to the holiday season. This annual event only happens due to the unwavering generosity of the airport community and the volunteers from the JFK Airport Rotary Club. Congratulations on another successful event, and the kids are certainly looking forward to many more. ■





MILES Petroleum Co. Inc.

We Keep Things Moving!

AVIATION / FLEET / INDUSTRIAL LUBRICANTS

**Free Delivery • Competitive Prices
Free Oil Analysis On Fuel Tanks & Lubricants**



ANGELA STERN
astern.mileswbe@gmail.com
Tel: (631) 767-8448

ED SULLIVAN
esullivan.mileswbe@gmail.com
Tel: (631) 767-8449

WE ENSURE YOUR CONTRACTURAL COMPLIANCE NEEDS*

Minority & Women Owned Certifications:

WBENC • ACDBE & DBE • Port Authority of NY & NJ • New York State • Nassau & Suffolk Counties



**Empire State
Development**



THE PORT AUTHORITY OF NY & NJ

* At the Port Authority of NY & NJ, we believe that our operations should reflect the diversity of our community. Because of this diversity, we have enacted a goal to award 20 percent of contracts to Minority-owned businesses, and 10 percent of contracts to women-owned businesses. We encourage each of our partners to also adopt these goals.

**20% participation goal with certified Minority-owned business enterprises (MBE)
10% participation goal with certified Woman-owned business enterprises (WBE)**

www.MilesOil.com

AIRPORT BRIEFS

LaGuardia Airport's Terminal B Unveils Terminal Bee

LaGuardia Gateway Partners (LGP), the private manager and developer of the brand new LaGuardia Terminal B, announced the debut of Terminal Bee, a custom-developed character that will serve as the terminal's friendly ambassador, providing tips for travelers to navigate the terminal and bringing levity to the overall guest experience.

With the holiday travel season fast approaching, Terminal Bee will be buzzing around helping to provide passengers with a world-class travel experience from curb to gate. Guests will find Terminal Bee on signage throughout the terminal, on the terminal website (laguardiaB.com), on social media, cocktail napkins at terminal bars, and more. In addition to sharing holiday greetings and terminal tips, Terminal Bee will highlight shopping and dining options.

"At LaGuardia Airport Terminal B, our chief objective is delivering an exceptional guest experience each and every day. To that end, we are excited to introduce Terminal Bee to travelers and our terminal community," said **Suzette Noble**, Chief Executive Officer, LaGuardia Gateway Partners. "In Terminal Bee, passengers will find a witty, charming, and optimistic ambassador offering helpful travel hacks and reminding you to "Take it Beezy," his catchphrase that aptly reflects the stress-free travel journey customers have come to expect when flying in and out of Terminal B.

LGP partnered with its advertising and design agency, Girardville Miners Cooperative, which conceived the character. The



agency then engaged with acclaimed character developer Pat Giles of Danger Pigeon Studios to develop the Terminal Bee character.

"This has been an amazing opportunity to bring the Terminal B brand to life," said **Brian Flatow**, President, of Miners' Cooperative, "through a character that's at once a fellow traveler, terminal ambassador, and friendly face that can take the stress out of any situation with a helpful hint, a point in the right direction, and some timely words of wisdom." **Pat Giles**, Chief Creative Officer of Danger Pigeon, added, "Creating a relevant, strategically grounded brand avatar that resonates with an audience is not easy. We worked closely with the LGP and Miners' Cooperative team through their process to build this character from the inside out. We know him well now, so it is going to be cool slowly revealing him to the public more and more."

In 2022, LGP completed the new Terminal B, one of the largest public-private partnerships in US aviation history, a multi-billion dollar redevelopment that included a new 35-gate terminal, a parking garage, dual pedestrian sky bridges, and double the number of shops, restaurants and amenities. In 2023, the terminal was named world's best new airport terminal and awarded a perfect five-star rating from Skytrax, becoming the first airport terminal in North America with the distinction.

Beyond this holiday season, Terminal Bee will continue to make his home in the magical universe of Terminal B with seasonal wardrobe updates and messaging throughout the year. ■

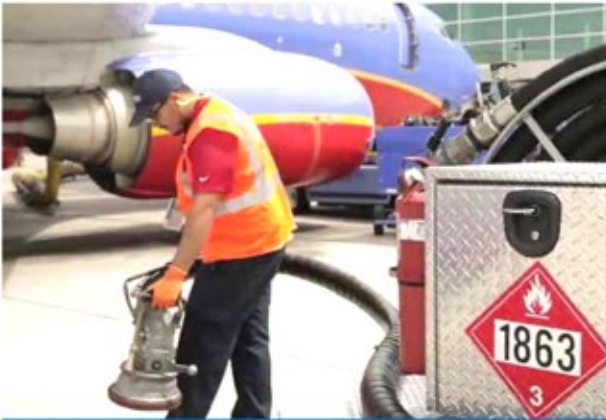
LGA Terminal B Turkey Advocates for a Vegetarian Thanksgiving

Travelers at LaGuardia Terminal B were greeted today by the one and only Terminal B Turkey as they traveled to their Thanksgiving destinations. The Terminal B Turkey posed for photos and encouraged guests to eat vegetables instead of its friends who are traditionally on the Thanksgiving menu.

Additionally, Terminal B has 'carved' out a series of unexpected spaces and engaging experiences for guests, including live jazz performances on the Terminal B sky bridges on this busy travel day. There's also extraordinary artwork to explore, pocket parks to relax in with benches and live greenery, a one-of-a-kind water feature with New York City-themed shows, and quiet seating areas along our skybridges. Younger travelers have dedicated play areas in each concourse with views of the airfield. Terminal B also has a great selection of shops and dining options to gobble gobble down a delicious meal or snack. ■



LGA Airport Job Opportunities



Fueling Agent \$27.25/hr

- Valid CDL A or B License required
- DOT Medical Card required
- Must be able to obtain Hazmat and Tank Endorsement



Airport Security Agent \$23.15/hr

- 2 years security experience required
- NYS Security License required
- Must have a valid Driver's License

Location: LGA Airport, Terminal B
Ground Floor, near Dunkin'

Date: Tuesday, December 24, 2024

Time: 9:00AM - 12:00PM

Walk-Ins welcome!

New Clients: Scan Code Below



<https://ow.ly/X8cUJ50Q3gwT>

Existing Clients: Email your Account Manager to apply




- Business attire recommended
- Masks recommended
- Please practice social distancing

All applicants must present:

- Social Security Card (unlaminated)
- State Driver's License, Learner's Permit, or Non-Driver's ID
- Working Documents Required
- Will be Drug Tested (cannabis included)

LaGuardia Career Center

 (718) 554-0222

 www.caonynj.com

Follow us on Social Media



PANYNJ and Revel Break Ground on Largest EV Charging Station at JFK Airport

Once Completed, JFK Will be Home to 46 Fast Electric Vehicle Chargers, Doubling Current Charging Capacity



The Port Authority and Revel announced they have broken ground on the installation of 24 electric vehicle (EV) fast chargers at John F. Kennedy International Airport's (JFK) west cell phone lot, more than doubling the airport's existing electric vehicle charging capacity. The new chargers will be operational in early 2025, available around-the-clock to the public and for-hire vehicles.

The expansion of electric vehicle charging infrastructure at Port Authority facilities is a significant element of the agency's industry-leading climate efforts. The agency's wide-ranging net-zero roadmap outlines several concrete steps to achieve the Port Authority's ambitious goal of net-zero carbon emissions by 2050, including assisting the transition to electric vehicles through widespread and accessible charging infrastructure. JFK is already home to 22 electric vehicle chargers that are frequently used by for-vehicle drivers serving the airport and to the community.

"Meeting the needs of for-hire-vehicle drivers and others visiting our airports is a top priority at the Port Authority," said Port Authority Chairman **Kevin O'Toole**. "We want to support the shift to clean energy at our facilities, and that includes partnering with companies like Revel to make sure electric vehicle charging infrastructure is available, accessible and convenient for everyone."

"The electric chargers currently at JFK are very popular, which shows strong demand for charging equipment to accommodate even more electric vehicles at our facilities," said Port Authority

Executive Director **Rick Cotton**. "This partnership with Revel is another major step in our commitment to reach net-zero carbon emissions by 2050, while supporting the transportation ecosystem around us to reach the same goal."

The 24 fast charging ports, funded and installed by Revel, will be installed in JFK's west cell phone lot, which is located off 130th Place in Queens and accessible via the Van Wyck Expressway or Belt Parkway. This installation is the second such partnership between the Port Authority and Revel, which is also installing 48 fast charging ports directly adjacent to LaGuardia Airport at 90-10 Ditmars Boulevard. The charging station near LaGuardia will be fully operational in late 2025 as the largest public fast-charging station near an airport in the nation. Both projects support New York City's Green Rides Initiative, which encourages the rapid electrification of for-hire vehicles with more than 10,000 new electric for-hire vehicles added this year.

"It's impossible to electrify rideshare without an abundance of charging near the airports. In partnering with the Port Authority at JFK, Revel has now cemented plans for the largest public fast charging stations at both of New York's home turf airports," said **Frank Reig**, co-founder & CEO of Revel. "Revel's JFK site will be one of the most used fast charging stations in the country, and with the Port Authority's support, we're on track to open it in a matter of months."

With this installation, JFK will host a total of 46 publicly accessible fast charging ports. More chargers will lead to shorter charge wait times across the airport, allowing for more zero-emission pickups and drop-offs, smoother flow of vehicles and less congestion. For airside vehicles used by airlines and airport operations, the agency is also working to build charging infrastructure for electric airside vehicles such as baggage tractors and airplane tows. Since 2019, 280 charging ports for ground service vehicles have been installed, helping to reduce at least 16,300 tons of carbon emissions annually and assisting the aviation industry in meeting the Port Authority's mandate to transition to commercially available zero-emission ground support equipment by 2030.

Other sustainability initiatives at JFK include New York state's largest solar plus storage project in parking lot 9, and New York City's largest rooftop solar array at the new Terminal One. Additionally, the Port Authority is electrifying its own vehicle fleet, with an ambitious goal to convert 50 percent of its light-duty fleet to electric by 2028 as part of its net-zero roadmap. ■



Clean. Safe. Compliant.

Full-service cleaning and maintenance programs for airport and aviation facilities.

SIDA Badged with U.S. Customs Seals and PONYA plated vehicles at both JFK & LGA airports.

- PANYNJ Janitorial Maintenance Small Business Enterprise Certified (JMSBE)
- Pre, post, & during-construction cleaning
- Airport lounge detailing and fine cleaning
- Building and office cleaning
- Steam cleaning for all surfaces
- Carpet cleaning & restoration
- Interior and exterior window cleaning
- Building facade cleaning
- Stainless steel cleaning
- Pressure and power washing
- Interior and exterior painting
- General maintenance services
- SIDA badged AOA Janitorial Services for Airport Terminals, Offices, Warehouse, and Hangars
- Ramp, roadway, and warehouse mechanical sweeping
- Foreign Object Debris (FOD) Programs
- Best Management Practices (BMP) implementation and management
- Airport marking painting and removal
- Emergency Spill response
- Bird-dropping cleaning, Bird control installations, including netting and spikes
- Bird strike clean-up
- Catch basin cleaning
- Emergency aircraft cleaning and decontamination
- Heavy-duty equipment and vehicle pressure washing



Aqueous Solutions is a Certified MWBE Woman-Owned Business Enterprise with the Port Authority of New York & New Jersey, State of New York, and New York City

24/7 Emergency Response Hotline: 1-800-294-4950



Located at John F. Kennedy International Airport
 1-800-294-4950 • (718) 355-9080
 info@aqsolution.com • www.aqsolution.com

NON-REV TRAVELER

Post-Pandemic & Hurricanes

The Island of St. Martin is back and better than ever.

BY MAUREEN KATZ

jkatz@metroairportnews.com

Thirty years ago, our good friend said he had a great island in the Caribbean for us to visit. He said that we would love the beaches, food, people, hotels, and European influence and that it is a legal piece of France and Holland.

My husband, Jon and I used to go to the island of Saint Martin five times a year. When JetBlue Airways started nonstop service from John F. Kennedy International Airport (JFK) daily, we decided to take advantage of this service, especially in the winter. Delta Airlines also began nonstop service from JFK, but only once a week. We had not been there in two years, but we were very motivated to go back to celebrate a big birthday of mine. Also, JetBlue now flies two flights a day from JFK, and on some days, they fly three times a day.

In 2017, Hurricane Irma hit Saint Martin, and it was the first Category 5 hurricane to strike the Leeward Islands on record. Princess Juliana International Airport and most structures on the island were devastated. In addition, the COVID pandemic delayed the island's recovery. It took the past seven years to finally rebuild the airport and it now has brand new terminals and facilities. Two years ago, it still had tents up while the rebuilding was completed.

We have always enjoyed staying on the French side of the island at Orient Bay. La Esmeralda Hotel is now our favorite, although we have stayed in several hotels on the Dutch and French sides of the island. The hotel's 50 rooms and suites are spread across 14 villas. Each villa has its own private swimming pool, and the beach is steps away.

We were surprised when we checked in on November 18th this year. The whole area of Orient Bay had a major power failure the



day before. No one had any idea when the electricity would resume. Since we were going to spend the afternoon on the beach, we did not care. However, after the sunset, there was still no electricity, and our hotel was in total darkness. The hotel provided its guests with flashlights and candles. We had to sleep with our terrace door shut due to the lack of screens and various wildlife that could walk or fly in. When we returned to the hotel the next day after going to the beach, the power was restored and the hotel gave us a 50% credit on our first night.

Although this island has many beautiful beaches, our favorite is Orient Beach, which is on the Atlantic Ocean side of the island. It stretches for about two miles and there are several concessions for renting chairs and umbrellas. These places also serve lunch and cocktails and have a wonderful atmosphere. The ocean here is very calm and easy to swim in. There are several places to rent equipment for water sports, especially kitesurfing, windsurfing, parasailing, and snorkeling. Many types of boating excursions travel around the island. You can find

a naturist beach on the extreme south of the bay. There is also something special here that we have never experienced anywhere before... wild donkeys walking on the beach. They are very friendly and can be fed by hand at any time.

It is possible to drive around the island in one day. However, if you are going to stay in the northeastern sector where Orient Bay is located, it is necessary to leave a lot of time to get to the airport. All the roads on the island are single-lane, and the traffic can be heavy during the day. Taxis are also readily available, and the airport to Orient Bay rate is approximately \$50(US). It is possible to rent a car, depending on where you stay. At Orient Bay there is a town square with several restaurants and shops that are easy to walk to.

Our next visit to Saint Martin will be during the first week of February. We are taking a 10-day Caribbean cruise from Miami, stopping in Philipsburg, the island's main port; this will be our first time visiting this island from a cruise ship, so stay tuned for an update in early 2025. ■



YOUR JFK TRANSPORTATION PROVIDER

PROVIDING SAFE & RELIABLE TRANSPORTATION

— SINCE 1995 —



OUR SERVICES

- Airports
- Charter/Groups
- Shuttles
- Flight Crew Shuttles
- Sporting Events
- Distressed Passengers



NANCY VARGAS
Chief Executive Officer
nancy@dh2limo.com



MIKE VARGAS
Chief Operating Officer & Founder
mike@dh2limo.com

79 North Boundary Road, Building 79 JFK, Suite 205, Jamaica, NY 11430

(718) 928 9966 www.DH2Limo.com DH2Limo DH2Transportation DH2Transportation

UPCOMING EVENTS

The most comprehensive listing of New York & New Jersey airport and aviation events available anywhere online. www.metroairportnews.com/airport-events

December 2

**JFK Airport Committee (JFKAC)
Quarterly Meeting**
Virtual Event
aircraftnoise.panynj.gov

December 3

**JFK Airport Rotary Club
Kid's Holiday Party**
Jet Blue Hangar #81
Jamaica, New York 11430
www.jfkrotaryclub.org

December 3

**LIBAA Annual Holiday
Meeting & Dinner**
The Fox Hollow
Woodbury, New York 11797
www.libaa.org

December 4

**Business Persons of the Year
Awards Gala**
Terrace On the Park
52-11 111th Street
Flushing, New York 11368
www.queenschamber.org

December 6

**KAAMCO Cargo Operations
Committee 42nd Annual
Holiday Dinner Dance**
Marriott New York JFK
135-25 142nd Street
Jamaica, New York 11436
www.kaamco.org

December 6

**LAAMCO 2024
Holiday Party**
LaGuardia Airport Marriott Hotel
East Elmhurst, New York 11369
www.laamco.com

December 10

ADDAPT Dinner Group
Heritage Club at Bethpage State Park
Farmingdale, New York 1173
www.addaptny.org

December 11

**Republic Airport
Commission Meeting**
Republic Airport-(FRG)
East Farmingdale, New York 11735
www.republicairport.net

December 13

LGA Kiwanis Club Holiday Party
Drinkology
Long Island City, New York 11101
www.lgakiwanis.org

December 14

**PAPD Emerald Society
General Meeting**
PA Police Emerald Society & Armed
Forces Association join forces once again
to volunteer with Wreaths Across America.
St. Patrick's Old Cathedral
263 Mulberry Street
New York, NY 10012
www.papdemeraldsociety.com

December 19

**JFK Air Cargo Association
Holiday Luncheon & Toy Drive**
Vetro Restaurant & Lounge
Howard Beach, New York 11414
www.jfkaircargo.aero

December 19

**Queens Chamber of Commerce
Holiday Reception**
Terrace On the Park
52-11 111th Street
Corona, NY 11368
www.queenschamber.org

December 23

**Civil Air Patrol
Falcon Squadron Meeting**
John F. Kennedy International Airport
Jamaica, New York 11430
falconsquadron.cap.gov

December 30

**The International Synagogue
Annual Hanukkah Party**
JFK International Airport
Terminal 4, 4th Floor
Jamaica, New York 11430
www.internationalsynagogue.org

January 2

**LAAMCO Monthly
General Meeting**
LaGuardia Airport-(LGA)
East Elmhurst, New York 11371
www.laamco.com

January 8

KAAMCO Members Meeting
John F. Kennedy International Airport
Port Authority Building
Queens, New York 11430
www.kaamco.org

January 9 & 23

**LGA Kiwanis Club
Monthly Meeting**
Virtual Event
www.lgakiwanis.org

January 13

**Civil Air Patrol
Falcon Squadron Meeting**
John F. Kennedy International Airport
Jamaica, New York 11430
falconsquadron.cap.gov

January 15

**JFK Airport Customs Brokers &
Freight Forwarders Association
Meeting**
Russo's On the Bay
Howard Beach, New York 11414
www.jfkbrokers.com

January 30

**Building Inclusivity 2025: A M/
WBE Construction Industry Event**
Bulova Corporate Center
75-20 Astoria Boulevard
Jackson Heights, New York 11370
www.queenschamber.org

March 22

**Airport Community Foundation
ACF Cup Soccer Tournament**
Hosted by the
Airport Community Foundation
York College
Outdoor Athletic Complex
94-20 Guy Brewer Blvd.
Jamaica, NY 11451
www.acf-cup

March 22, 2025 • York College



Registration Is Open for the Inaugural Airport Community Soccer Tournament

The Airport Community Foundation (ACF) and its partners are proud to introduce the ACF Cup, a 5-on-5 soccer tournament benefiting the New York airport community. The ACF Cup brings together teams comprised of players from airport companies for a day of competitive play and camaraderie. Beyond the on-field action, the tournament highlights the importance of supporting the next generation of aviation professionals and strengthening community connections while fostering teamwork and friendly rivalry among the airport community.

Register Your Company Team Today to Bring Home the Cup!



WWW.ACF-CUP.COM



Contact us for additional information (718) 750-4441 or info@acfhelps.org



Airport Community Foundation, Inc. is a qualified 501(c)(3) tax-exempt organization registered in the U.S. under Federal Tax ID: 33-1522353. For additional information about the Airport Community Foundation and its partners, visit www.ACFHelps.org



Frequent User Discount Fares Available



\$26⁵⁰

10-ride cards

(valid for 30 days after first use)

\$42⁵⁰

**30-day
unlimited card**

(valid for 30 days after first use)

Check the expiration date on your discounted card at any AirTrain ticket vending machine.



John F. Kennedy
International Airport