

METROPOLITAN Airport News™

JANUARY 2025

The Journal of the Metropolitan New York Airport Community

Making Concessions

A diverse & delightful blend
of national & community-based
airport offerings.

Also Inside:

The Iconic Marine Air Terminal
at LaGuardia Airport

The Aviation Trail

Follow the Trail in Ohio that Led to the Skies of the World

Winter Is a Great Time to Go to Australia

Airport Employment, Upcoming Events, & Aviation News



CitiMed

*Complete Medical Care
Injury Doctors*

Work & Accident Related INJURY URGENT CARE

Employment, DOT and FAA Physical Exams
Drug and Alcohol Testing



All Testing Completed On-Site

CitiMed JFK

JFK International Airport Building 78A
78a North Boundary Road
Jamaica, New York 11430

718-656-9500

Mon - Fri 7 am to 11 pm

Sat - Sun 9 am to 4 pm

citimedny.com



PUBLISHER

Kathryn Bliss
kbliss@metroairportnews.com

EDITOR-IN-CHIEF

Julia Lauria-Blum
jblum@metroairportnews.com

CREATIVE DIRECTOR

Raymond F. Ringston
rringston@metroairportnews.com

PHOTOGRAPHER

Beverly Holder
bholderphoto@gmail.com

COMMUNITY RELATIONS

Roberta Dunn
rdunn@metroairportnews.com

ADVERTISING

Edward J. Garcia
egarcia@metroairportnews.com

EDITORIAL CONTRIBUTORS

Tanya Austin
taustin@metroairportnews.com

Maureen Katz
mkatz@metroairportnews.com

Jonathan Katz
jkatz@metroairportnews.com

Robert G. Waldvogel
robertw@metroairportnews.com

**METROPOLITAN
AIRPORT NEWS**

JFK International Airport
PO Box 300877
Jamaica, NY 11430
Tel: (347) 396-0904
info@metroairportnews.com

www.metroairportnews.com

Permissions: Material in this publication may not be reproduced, stored in a retrieval system, or transmitted in any form or by any means (electronic, mechanical, photocopying, recording, or otherwise) without the prior written permission of the publisher.

The views and opinions expressed in *Metropolitan Airport News* are those of the authors and advertisers, and do not necessarily reflect the policy or position of the publisher. Articles presented in this publication are for general information and educational purposes and do not constitute legal or financial advice.

©Copyright 2025 by Airport Media, Inc.
All rights reserved • Printed in the USA

Empire State Development
Certified MWBE
Woman-Owned Business Enterprise

New York Press Association
NYPA

Welcome to the January issue of the *Metropolitan Airport News*. I hope you had a peaceful holiday season with your loved ones. As we prepare for a busy winter season around the airports between increased travel and weather events here in the Northeast, I'm still shaking off the calm from a wonderful holiday season spent with my family and friends. I traveled through JFK this past holiday season, and the thing that strikes me most about arriving at an airport, even though I work here, is that I immediately want to eat and shop when I'm traveling! I'm sure there is some psychology that goes into it from a terminal and concession design perspective, but whatever it is, it's working on me.



This month's issue shines a spotlight on the concessions that are available throughout the PANYNJ airports. There are many options, from locally owned food purveyors to high-end designers and everything in between. You have plenty of time to browse and shop if you get to the airport early, as I always do. Many retailers will offer discounts for SIDA-badged employees who use their shops. There's no harm in asking, as we conduct significant business with them while working at the terminals.

Whether you are working or travelling, I hope you take advantage of the diverse options for dining and shopping at the terminals. They are well prepared to offer unique, healthy options that represent our local landscape. I can't wait to see more of these concessions opening up in the new terminals.

Through my volunteer roles at the airport over the years, I can attest that the concessions are some of the most generous businesses with their time, talent and resources. They are quick to donate to the USO, huge amounts of supplies for the kids parties and raffle prizes to raise money for worthy causes. Not to mention, the volunteers often get treated to breakfast and lunch from our amazing concessionaires. A lot of good things beyond the passenger experience happen because of their vision for philanthropy and support of the community in which they serve.

If you would like to connect with us to offer ideas, share happenings or just to introduce yourself, please send an email to info@metroairportnews.com. We look forward to hearing from you.

I'll see you around the airports!

Katie Bliss

Katie Bliss, *Publisher*
kbliss@metroairportnews.com



ON THE COVER

Jennifer Spencer founded alchemy, a Brooklyn-based lifestyle brand, now at JFK Terminal 8, offering luxury in everyday living. With a passion for unique, functional products, she curates candles, perfumes, jewelry, and home decor. Handmade in small batches, alchemy prioritizes sustainability and local craftsmanship. (ANDRES OTERO AO IMAGES)

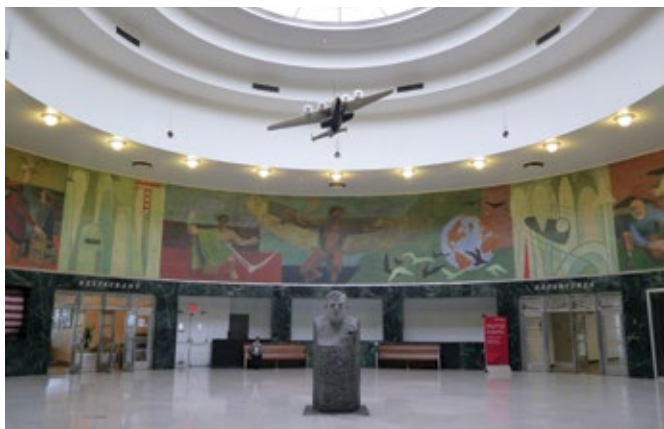
EDITOR'S NOTEBOOK

The Iconic Marine Air Terminal at LaGuardia Airport



In 2022, with the completion of LaGuardia Airport's transition into a 21st-century entryway into New York City, the stunning new Terminal B and Terminal C have largely taken center stage in the news and by passengers traveling through them...and deservedly so. But across the field stands another terminal that preceded these state-of-the-art terminals, namely the Marine Air Terminal (or Terminal A). And while its size and scope of services are diminutive in comparison, it is no less impressive in its design and scope in aviation history.

The historic Marine Air Terminal was designed in the Art Deco style by architects Delano & Aldrich and is constructed of a two-story circular core with an attic, from which a rectangular entrance pavilion and two symmetrical one-story wings project. The main part of the building is tiered in a 'wedding cake' configuration. The first and second stories have windows that encircle the building, framed by dark brick and separated by a faceted brick panel. Above a simple projecting stainless steel cornice on the first story is a smooth parapet wall behind the roof-top observation deck and promenade, and on the tier of the second story is a frieze of flying fish.



These golden fish fly through the air against a background of a wave-patterned sea executed in two shades of blue. The attic on the third floor is sheathed in stainless steel panels, as is the original control tower at the rear of this tier.

The entrance pavilion is composed of a three-story rectangular center section. At the center is a bank of four stainless steel doors with grilles in the form of two stylized winged globes. The core housed airport-related waiting rooms, a mailroom, health, customs inspection, and detention offices. On the circular interior wall is the restored mural, 'Flight,' by artist James Brooks.

This epic mural, measuring 237 feet long by 12 feet high, depicts the history of humanity's quest for the skies, from Greek mythology to the 1930s. Panels range from Icarus and Daedalus to the Wright brothers, culminating in the final scene of a Yankee Clipper landing on the bay.

On July 9, 1982, the Marine Air Terminal at LaGuardia Airport obtained National Historic Landmark status (NRHP#82003397) on the National Register of Historic Places.

In 1995, the Port Authority contracted the architectural firm Beyer Blinder Belle to conduct a significant multi-phase restoration of the Marine Air Terminal, completed in 2005. The restoration included the reconstruction of the front entrance portal, the repair and replacement of the extensive Tennessee Pink Marble flooring and walls, the addition of a removed historic staircase, and the introduction of new period storefronts within the historic rotunda. Extensive exterior restoration of the building included the reconstruction of the building parapets and roofing, restoration of the curved brick facades with their decorative "flying-fish" terra cotta frieze, and replacement of the building's windows.

While uses for the terminal have changed, even with the few alterations that have been made to the exterior of the building, its type is unique to the 20th Century. Today, the Marine Air Terminal is the only active airport terminal dating from 'The Golden Age of the Flying Boat' when trans-Atlantic passenger flights were made aboard Pan American 'Clipper Ships', and it stands proudly alongside today's successors of the former Terminal B and Terminal C, before their 21st century-age transition. ■

Julia Lauria-Blum

Julia Lauria-Blum, *Editor-in-Chief*
jblum@metroairportnews.com



THE FDU

Master of Public Administration

MPA

For Employees at Newark & JFK Airports!

Spring 2025
Term Starts
January 21!

To Learn More
Email: mpa@fdu.edu
Call: 201-692-7171

FDU's MPA will equip you with the managerial, analytical and conceptual skills to become a leader in your field.

- Convenient online or on-campus classes
- Competitive tuition
- Expanded course options include security, terrorism and crisis management
- Specializations to meet your career goals, including Global Transportation Management
- Associate and bachelor's degree completion option also available!

To Learn More
VISIT: fdu.edu/mpa



**FAIRLEIGH
DICKINSON
UNIVERSITY**

School of Public and Global Affairs

Sustainability Is At the Forefront of Everything We Do



*Proudly serving
New York and the
Tri-State area for
more than 20 years*



Get the Royal Advantage!

Compactor & Container Service
Demolitions & Clean Out
Document Shredding • Composting & More!

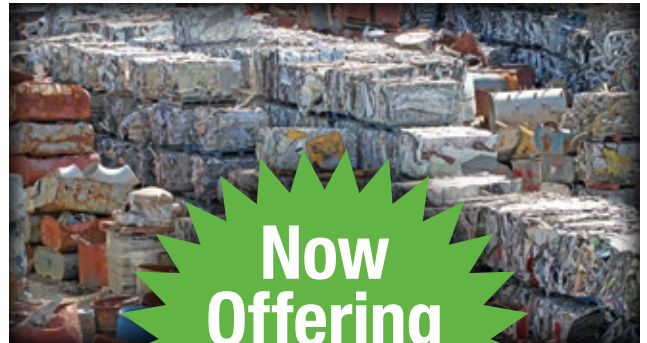
SINGLE STREAM MATERIAL RECYCLING

With the use of our Single Stream Material Recycling Facility, Royal helps to increase waste diversion rates up to 90%.

ROYAL
Waste Services, Inc.

(718) 526-2623

Call today for more information,
or to speak with a Royal Waste
Green Team Sustainable Consultant



**Now
Offering
Metal Recycling
With Rebates**

www.royalwaste.com

COMPANY SPOTLIGHT

Civil Air Patrol – U.S. Air Force Auxillary

Volunteers serving America's communities, saving lives, and shaping futures.



The Civil Air Patrol (CAP) was founded on December 1, 1941, to mobilize the nation's civilian aviation resources for national defense service. Since its earliest days, this vigilant organization of citizen Airmen has been committed to service to the United States and evolved into a premier public service organization that carries out

emergency service missions when needed in the air and on the ground.

As a Total Force partner and Auxiliary of the U.S.A.F, the Civil Air Patrol is there to search for and find the lost, provide comfort in times of disaster, and work to keep the homeland safe. With its membership of 60,000 who devote their time, energy, and

expertise toward the well-being of their communities, the organization also promotes aviation and related fields through aerospace/STEM education, helping to shape future leaders through CAP's cadet program

The CAP's 83-year legacy of service has maintained its commitment to nearly 1,500 communities nationwide. As part of First Air Force Combat Command, the 60,000-member organization has over 560 aircraft and over 1,000 ground vehicles nationally.

The CAP Falcon Squadron is a Senior Member unit (adults only) based at JFK International Airport. As volunteers for the U.S.A.F. Auxiliary-Civil Air Patrol, the Falcon Squadron serves our nation, state, city, and local communities by performing missions for the CAP in the area of Air Search and Rescue, Aerospace Education, and Cadet Programs.

As a large organization, the CAP offers many opportunities to serve and learn. Civil Air Patrol volunteers have the choice of how they can best serve the CAP by choosing from the many areas of service that they most prefer.

Civil Air Patrol members do not have to be pilots, but many Falcon Squadron members are. While members are not required to fly, should they be interested in flying, they have that opportunity with CAP Falcon Squadron. ■



**Civil Air Patrol
Falcon Senior Squadron**

New York Wing – (NY-379)

Port Authority of NY & NJ

JFK Building #14

John F. Kennedy Airport

Jamaica, NY 11403

www.falconsquadron.cap.gov

AIRPORT INTEL

Airport Terminal Replica Provides Rehearsal Space for NTO's Incoming Tech at JFK

The information screens can tell you where to find food and drinks. The ticketing kiosks can spit out a boarding pass. The conveyor belts can weigh and move your luggage. The check-in gate can turn green and swing open. You might think you were inside a real airport.

In reality, an unassuming office park some 40 miles from John F. Kennedy International Airport is a fake airport terminal to test the very real state-of-the-art technology that will create one of the most exceptional passenger experiences in the world at the airport's new \$9.5 billion international terminal.

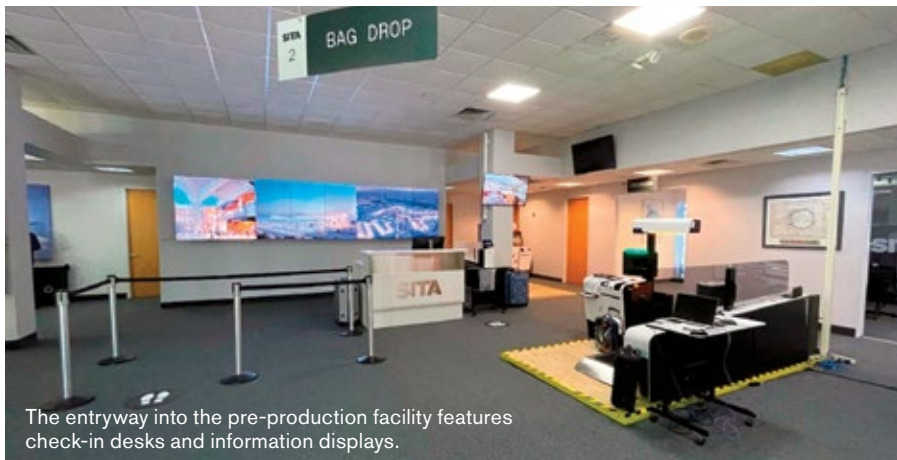
The Port Authority's private partners constructed the replica airport terminal to build JFK's new Terminal One, supported by AECOM Tishman and aviation and travel technology provider SITA, to get the band ready to play some impressive tunes to-

"THE WORK GOING ON HERE WILL PLAY AN IMPORTANT ROLE IN ACHIEVING THE PORT AUTHORITY'S GOAL OF TRANSFORMING JFK INTO ONE OF THE WORLD'S GREAT NEW GLOBAL GATEWAYS. THE NEW TERMINAL WILL BE NOTHING LESS THAN WORLD-CLASS. THAT'S WHAT WE'RE STRIVING TOWARDS."

HERSH PAREKH, Port Authority Deputy Chief of Intergovernmental Affairs

gether. The required teamwork is perhaps most evident in one of the new terminal's defining features: the use of facial recognition. Instead of rummaging around for boarding passes, passports, and IDs at several stops along the terminal journey, future New Terminal One passengers will have the option to get from curb to gate using only their faces. After registering at a check-in kiosk, data is transmitted to several different systems across the terminal to allow equipment to recognize different passengers and clear them through various checkpoints.

Pioneering systems to handle baggage will also hinge on communication and collaboration between terminal systems,



The entryway into the pre-production facility features check-in desks and information displays.

ensuring a passenger's journey mirrors that of their luggage, including any last-minute itinerary or aircraft changes.

"We will be using cutting-edge technology to ensure a seamless experience from the minute they enter the airport to the

minute they get to their gate and take off," said Hersh Parekh, the Port Authority's deputy chief of intergovernmental affairs. "That's the technology that's being tested at this site, from check-in to baggage handling and everything that comes as part of the airport experience."

While passengers will have no shortage of impressive tech in front of them, the most transformative changes may be behind the scenes, where new systems will be in place to manage the flow of aircraft to and from the apron, the aviation term for the airside area between terminal gates and taxiways. The space can easily get congested, resulting in delays that can quickly

cascade.

At the new Terminal One, the apron will be managed by software from ADB Safe-gate, integrating a stream of constantly changing information from a multitude of sources to make lightning-fast decisions around aircraft movement, all in the hopes of minimizing delays and maximizing efficiency. Beyond the federally run air traffic control, the new terminal will have its own ramp management tower where controllers can keep a close eye on specific aircraft.

Advanced docking systems will give planes parking instructions customized to their aircraft model, supplementing on-the-ground workers and providing backup during severe weather. The software also integrates artificial intelligence, collecting data on all arriving and departing flights to make predictions around aircraft schedules and turnaround times.

For Parekh and the Port Authority, the cutting-edge technology going into the new terminal encapsulates the larger goal around the agency's \$19 billion renovation of John F. Kennedy International Airport, which includes two new terminals, expansion and modernization of existing terminals, streamlined roadways, local shops and restaurants, and New York-centric art that gives travelers an unmistakable sense of place. **PANYNJ MEDIA RELATIONS**

THE LAW OFFICES OF MCINTYRE, DONOHUE, ACCARDI, SALMONSON, & RIORDAN, LLP

PROTECTING YOUR RIGHTS. SECURING YOUR FUTURE.



SPECIALIZING IN:

WORKERS' COMPENSATION
SOCIAL SECURITY DISABILITY
3/4'S DISABILITY PENSION

HURT AT WORK?
CALL US TODAY!

866.557.7500

PROTECTING WORKERS THROUGHOUT NY STATE

CALL US TODAY FOR A FREE CONSULTATION!



inquire@licomplaw.com



licomplaw.com



Rendering of JFK Terminal 6 Center Hall

Making Concessions

A diverse & delightful blend of national & community-based airport offerings.

JULIA LAURIA-BLUM
jblum@metroairportnews.com

As the Port Authority's \$30 billion airport redevelopment program moves forward across New York and New Jersey, a record 32.4 million passengers were welcomed across the agency's commercial airports in the first quarter of 2024. From January through September 2024, about 109.7 million passengers used the agency's commercial airports, with 11.9 million passengers welcomed during the month of September alone.

With passenger records for travel set at John F. Kennedy International, Newark Liberty International, and LaGuardia Airports, an enormous passenger demand

arrives today following years of redevelopment at the agency's three major airports, as their outdated terminals and footprints are transformed into 21st-century world-class gateways.

Over the last years, *Metropolitan Airport News* has featured many of the substantial initiatives that have taken place at Port Authority airports and that involve considerable investments through public-private partnerships (P3s), cutting-edge technology, sustainability, arts and culture, community outreach, and passenger experience enhancements.

This month's feature focuses on the present and forthcoming concessions and concessionaires at New York metropolitan airports and how they enhance the

passenger experience through both national and local community-based dining and retail options...options that all passengers can enjoy and that integrate a sense of place representative of the city and the region our airports serve. In terms of concessions at airports, these are businesses engaged in the sale of goods (food and beverage, retail, services) under agreement with the airport or owner lessee of the terminal.

For decades, the typical airport experience was largely task-driven... you commute to the airport, haul your luggage, check-in, go through security, find your gate, head to a newsstand for a magazine, stop to browse at a gift shop or a snack bar for a bite to eat, or go to a busy lounge to have a drink prior to boarding your flight.

But today, airports are progressively being seen as civic entryways, as opposed to a mundane vehicle utilized to transport people from Point A to Point B. In order to surmount the long-held general sentiment of an airport as simply being a place and a stressful experience to go through in order to reach your destination, the presence of concessions is playing a vital part in transforming airports into attractive, pleasurable destinations in their own right. Concessions are helping to transform helping to transform them into immersive spaces that are comfortable, vibrant, and inclusive, and that enhance the passenger journey from a perspective of function and necessity, to a desirable world-class experience that operates efficiently and brings revenue into the airport.

Retail establishments at airports may provide a variety of exciting products with an increase in the presence of local brands and businesses, while food and beverage concessions at airports offer appealing, local, healthful options and unique specialties that reflect the city's culture and a touch of its local flavor from its surrounding communities. Technology at airport concessions is also increasingly important along all segments of a traveler's journey, integrating technology into retail shops such as touch screens that allow customers to shop or retrieve details about products they may be interested in.

The transformation of LaGuardia Airport (LGA) initiated in 2015 with a



LaGuardia Airport Terminal B

comprehensive plan to construct a world-class, 21st-century airport with a unified terminal system is particularly notable in having created a best-in-class passenger experience featuring modern amenities that reinforce the airport as a broader experience and a welcoming sense of place along each passenger's journey.

Upon its completion in July 2022, the **LaGuardia Terminal B** redevelopment project led as a P3 between **LaGuardia Gateway Partners (LGP)** and the Port Authority NY & NJ, the 1.3 million sq. foot terminal offers its guests a completely new airport experience with an eclectic variety of retail, food and beverage, and locally inspired concessions.

At LGA's Terminal B, there are some 15 retail shops and nearly 30 food and beverage concessions, ranging from quick service in its food hall, to grab and go, to 1st class table service, integrating well-known, iconic New York establishments in the terminal that reflect the local flavors and culture of the city that include Eli's Essentials, Junior's, Brooklyn Diner, 5 Boroughs Food Emporium, Irving Farm Coffee Roasters, Hunt and Fish Grill, Bowery Bay Shops, District Market, FAO Schwarz, The Scoop, and more.

In partnership with the Port Authority, **Delta Air Lines** and **OTG Concessions Management** offer travelers at the new, expansive **LaGuardia Terminal C** a blend of innovative designs and restaurants that use unique, locally sourced ingredients. Terminal C includes 30 percent more concession space than Delta's former terminals, with 95 percent of the new concessions located post-security, allowing passengers to shop and dine while waiting to board their flight.

From modern Mediterranean to American traditions and a New York-inspired French Brasserie, Terminal C's retail and food and beverage concessions, collaborating with local businesses, include local-inspired and popular favorites like Birch Coffee, Bubby's, Chuko Ramen & Essex Burger, H & H Bagels, Soleil Brasserie, Fiorello Market, Sunday Supper, Rossi Pizzeria, CIBO Express Gourmet Market, Patricia Nash, and more.



LaGuardia Airport Terminal C

Continued On Page 12

Continued From Page 11

Today's remaking of LaGuardia Airport into a modern, unified terminal system comes after decades of the airport bearing the reputation for its confined, outdated facility and experience. The result of its remarkable transformation and the vision to enhance the customer experience, largely through its concessions, has helped LaGuardia Airport earn its title as 'Best Airport in the U.S. in the 2024 *Forbes Travel Guide* Verified Air Travel Awards. This title was based on a survey of 5,000 hospitality and travel experts and the guide's most well-traveled fliers, and this recognition is the most recent in a long list of accolades given to LaGuardia throughout the course of the airport's redevelopment, which includes the much coveted Skytrax 5-Star rating awarded to Terminal B as the 2023 World's Best New Airport Terminal along with the distinction of it becoming the first terminal in North America to be awarded the highest rating by Skytrax.

Following the Port Authority's comprehensive plan to rebuild its airports into 21st-century world-class travel gateways, the agency also embarked on the complete redevelopment of **Newark Liberty International Airport**, which vigorously began in phases with the opening of the new state-of-the-art **Terminal A** in January 2023.

As a centerpiece of the Port Authority's airport-wide renaissance, the completed Terminal A is home to a large variety of



PORT AUTHORITY NY & NJ
Newark Liberty International Airport Terminal A

concessions and retail establishments that feature the best that New Jersey and the surrounding region have to offer, with an approximate 1 million square feet of space and 33 gates expected to handle an estimated 13.6 million passengers a year. Various retail, food, and beverage options are positioned throughout the terminal, in addition to a main, centralized post-security concession area where passengers can comfortably dine and shop while waiting for their flights. New Jersey favorites such as Smokehouse BBQ, Office Tavern & Grill, Jersey Mikes, Kitchen Step Neighborhood Bistro, Playa Bowls, Bang Cookies, Bold

Newark, Artist Pop Shop, and more offer both locals and tourists a taste of New Jersey and a sense of place.

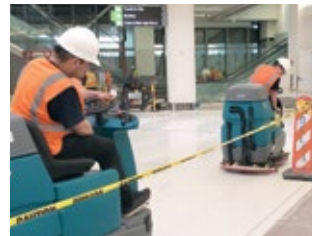
In just over a year since its opening to the public, the Port Authority and **Munich Airport NJ LLC**, the operator of Newark Liberty International's new Terminal A, announced in March 2024 that Terminal A was given the prestigious Skytrax 5-Star rating, and today Newark's Terminal A joins LaGuardia Airport's Terminal B as the only two airport terminals in North America awarded the highest rating by Skytrax. Additionally, with the Port Authority's ongoing vision to reimagine Newark Liberty International as a world-class gateway, the agency's plan calls for building a new, world-class international terminal to replace Newark's current Terminal B while enhancing Terminal C to improve customer experience.

In the midst of the Port Authority's \$19 billion transformation of JFK International Airport, the public-private redevelopment program to build 'A New JFK' features the current multi-phased construction of two immense, state-of-the-art terminals across five previous terminal sites at the airport; the 2.6 million-square-foot **New Terminal One (NTO)**, led in partnership with the Port Authority and the NTO, a consortium of financial and operating sponsors, and the 1.2 million-square-foot **Terminal 6**, led by **JFK Millennium Partners (JMP)**, the private



PORT AUTHORITY NY & NJ
New Terminal One at JFK (Rendering)

Continued On Page 14



Clean. Safe. Compliant.

Full-service cleaning and maintenance programs for airport and aviation facilities.

SIDA Badged with U.S. Customs Seals and PONYA plated vehicles at both JFK & LGA airports.

- PANYNJ Janitorial Maintenance Small Business Enterprise Certified (JMSBE)
- Pre, post, & during-construction cleaning
- Airport lounge detailing and fine cleaning
- Building and office cleaning
- Steam cleaning for all surfaces
- Carpet cleaning & restoration
- Interior and exterior window cleaning
- Building facade cleaning
- Stainless steel cleaning
- Pressure and power washing
- Interior and exterior painting
- General maintenance services
- SIDA badged AOA Janitorial Services for Airport Terminals, Offices, Warehouse, and Hangars
- Ramp, roadway, and warehouse mechanical sweeping
- Foreign Object Debris (FOD) Programs
- Best Management Practices (BMP) implementation and management
- Airport marking painting and removal
- Emergency Spill response
- Bird-dropping cleaning, Bird control installations, including netting and spikes
- Bird strike clean-up
- Catch basin cleaning
- Emergency aircraft cleaning and decontamination
- Heavy-duty equipment and vehicle pressure washing



Aqueous Solutions is a Certified MWBE Woman-Owned Business Enterprise with the Port Authority of New York & New Jersey, State of New York, and New York City

24/7 Emergency Response Hotline: 1-800-294-4950



Located at John F. Kennedy International Airport
1-800-294-4950 • (718) 355-9080
info@aqsolution.com • www.aqsolution.com

Continued From Page 12

consortium selected by the Port Authority to build and operate the new T6.

In pace with JFK Airport's ongoing transformation is the expansion and modernization of the existing **JFK International Terminal 4**, completed in multiple phases in partnership with **Delta Air Lines** and **JFKIAT**, and Terminal 8, in collaboration with **American Airlines** and **Unibail-Rodamco-Westfield (URW) Airports**.

Building on the **Terminal 8 (T8)** expansion project, which was completed in November 2022, the Port Authority, American Airlines, and URW Airports recently announced 21 new dining, retail, entertainment, and amenity brands powered by 13 local and diverse businesses featuring popular brands such as Eataly and Momofuku alongside New York local favorites Black Tap, Alidoro, Harlem Chocolate Factory, and many more.

Also recently announced was the opening of six new retail spaces at T8 operated by small, local MWBE entrepreneurs. As part of the \$125 million commercial redevelopment program for T8, the shops were selected through URW Airports' Small Business Accelerator Program and represent the program's commitment to providing opportunities for local businesses while delivering enhanced offerings to passengers. The Small Business Retail Accelerator Program lowers the barrier to entry into the airport for small local businesses and entrepreneurs by offering flexible deal



(ANDRES OTERO AO IMAGES)

(L.-R.): T8 concessionaires Jennifer Spencer, alchemy, and Nadia Ackerman, natchie.

terms and small format, plug-and-play spaces that significantly reduce upfront and design costs. Six dedicated turnkey spaces, two inline stores, and four retail kiosks were developed for founders or businesses from southeast Queens, Greater Queens, and the New York City metro regional area.

Jennifer Spencer is the founder of alchemy, a Brooklyn-based lifestyle brand offering luxury in everyday living now present at T8, and she recently commented, "Opening a location at JFK's Terminal 8 has been an incredible milestone, made possible through the URW Local Small Business Accelerator. The program

provides invaluable tools, including mentorship and operational support, which allows us to refine our business model and product offering to a diverse audience of travelers. We're excited to bring our thoughtfully curated products to one of the busiest international hubs and look forward to building lasting connections with our customers all over the world," said Spencer.

Nadia Ackerman, a Brooklyn resident and singer/songwriter, is bringing natchie, her popular line of hand-drawn illustrations, to JFK Terminal 8 for the first time. Her store features art, greeting cards, stationery, luggage tags, magnets, sustainable totes, and more. "I always wanted to be in airports as I believe it is the perfect place for my brand," Ackerman said. "The support I have received through URW's small business initiative is immeasurable. This is an enormous opportunity to expand to a global audience, and I'm so excited to be here!"

Additionally, in July 2023, the Port Authority launched a specialized training program called the **Institute of Concessions (IOC)**, offering extensive training and mentoring to increase the number of local and diverse airport concessionaires at JFK. The IOC trains small business in key competencies and skills needed to competitively bid for and successfully operate airport concession and is strongly supported by the Port Authority's private



PORT AUTHORITY NY & NJ

Terminal 8 at John F. Kennedy International Airport

Continued On Page 16



OPENINGS AVAILABLE FOR

Duty Manager and Supervisor
Office Agents • Warehouse Agents • Tractor Trailer Drivers

REQUIREMENTS & QUALIFICATIONS

Must be at least 18 years old • Must be able to lift 70 lbs. on a regular basis (Warehouse)
Valid driver's license with excellent driving record

Must Pass 10 year background check • Must have authorization to work in the U.S.

Starting Salary \$19.00+ per hour for Warehouse and Office Agents

EMAIL RESUME TO:

CPILARINOS@AGI.AERO

For immediate consideration, please stop by our JFK Facility
Delta Cargo Building 21A Room 202 between the hours of 10:00am & 1:00pm

Please bring your resume and ALL government I.D's.

Alliance Ground International provides airline cargo handling services to 55 airlines at thirteen airports: Atlanta, Chicago, Fort Lauderdale, Kansas City, LaGuardia, Las Vegas, Los Angeles, Miami, Newark, New York JFK, Orlando, Salt Lake City and San Francisco. Warehouse and ramp operations schedules are constantly adjusted to flight operations. With partners such as Cargo Force and The Cargo Security Company; Alliance Ground International can be your "one-stop-source" for all of your cargo handling needs. The culmination of years of experience with its industry partners, Alliance Ground International offers a vast range of services: Cargo Handling, Ground Handling, Mail Handling, Passenger, and Security.

WWW.AGI.AERO

Continued From Page 14

partners in the redevelopment of JFK: the New Terminal One, Delta Air Lines and JFKIAT, JFK Millennium Partners and American Airlines, all who share the goal of creating a unique, New York sense of place

On December 20, **JFKIAT (T4)** reached a new milestone, marking 27M passengers at the terminal in 2024 – the highest number of passengers ever recorded in a single year there. JFKIAT has actively expanded its roster of commercial partners throughout T4s transformation and redevelopment and recently welcomed Eastward, Boulton & Watt, Melt Shop, Starbucks, Hudson Nonstop, and Queens Beat by Hudson. These new additions enhance T4's already diverse and high-quality food and beverage options, offering a wide range of flavors that reflect both local New York favorites and global influences.

Queens Beat by Hudson brings a curated selection of local offerings into T4. This new shop offers passengers an authentic local shopping experience, as JFKIAT works with local businesses to supply goods and merchandise that travelers may not have come across while visiting New York. The Melt Shop's new location at T4 brings travelers the classic comfort food of New York City, and the newly opened Eastward Restaurant brings the flavors of Long Island to



JFKIAT T4

travelers, celebrating fresh produce and seafood in a relaxed coastal tavern setting.

The 23-gate **New Terminal One** aspires to be among the best terminals in the world with the first phase scheduled to open in 2026. It will offer exceptional dining and retail amenities where travelers will experience iconic local concessions, shopping options, and modern lounges.

In May 2024, URW Airports and The New Terminal One announced the Competitive Evaluation Process (CEP) for the Food Hall and Travel Essentials tenders,

marking another significant milestone in the development of the commercial program for the privately funded all-international terminal. The NTO is designed to showcase brands at their best and cater to one of the world's most attractive customer bases while creating opportunities for local businesses and residents.

The Food Hall tender provides an incredible opportunity for innovative local and global market leaders who are well-versed in introducing new concepts and ideas and thrive at bringing new thinking to deliver best-in-class design, food, service, and guest experience. Structured as a single package of one landside and five airside units totaling 3,736 square feet, the tender will cover approximately half of the Food Hall in The New Terminal One.

With an overall program goal of 50% New York local food and beverage brands, the operator will work with the vibrant and unique local food and dining community to create genuine moments of wow. The tenderer shall offer a variety of menu offerings presented in the latest in outlet layouts, design, innovation, and concepts. All guests will be able to order food according to their preference, whether it is directly with an associate, through a kiosk, or on a mobile device.

“Customers can look forward to world-class dining and retail at the New Terminal One, including exciting first-to-airport brands, when we open our doors in 2026. From the rich diversity of local New York

Continued On Page 18



(ANDRES OTERO/IMAGES)

Monisha and Rajiv Singla are celebrating not only the opening of their latest concessions concepts at John F. Kennedy International Airport (JFK), but a return to the facility where they began their airport careers. The brother-sister duo behind ACDBE-certified M&R Concessions recently debuted a new Dunkin' in JFK's revamped Terminal 8 and will soon open an Alidoro sandwich shop in the terminal as well.

ASAK

ONE OBJECTIVE. YOURS.

A NEW YEAR, A NEW START..
MORE THAN A PARTNER, WE'RE FAMILY.

MAKE US A PART OF YOURS



FOR FURTHER INFORMATION VISIT US AT ASAK.AERO

GROUND HANDLING • AIRCRAFT ANCILLARY SERVICES
CARGO & MAIL HANDLING • GSE MAINTENANCE
SNOW REMOVAL & DE-ICING SOLUTIONS

Continued From Page 16

products and flavors, to globally-renowned powerhouse brands, our array of dining and shopping options will help create a truly exceptional guest experience,” said The New Terminal One CEO **Jennifer Aument**.

The Travel Essentials tender at the NTO will provide a unique platform for the industry’s leading innovative players to develop the best global, U.S. and New York merchandise mix to provide guests a high range and quality of choice and promote a New York sense of place. Structured as a single package of three landside and four airside locations totaling 6,427 square feet, the travel essentials operator will offer an array of snacks, beverages, pharmacy items, and magazines, as well as specialized offers such as luggage, books, and gifts.

As the development of **Terminal 6 (T6)**, led by **JFK Millennium Partners (JMP)**, progresses, an exciting retail experience is set to launch at the brand-new terminal with the completion of its first phase of construction and opening of its first gates in 2026.

JMP has partnered with **Avolta** companies **Hudson/Dufry** to open over 28,000 square feet of duty-free retail space in Terminal 6. This space will feature a mix of

global luxury brands and local New York favorites, creating a unique sense of place. The retail program will include several first-to-airport initiatives and activations, offering travelers a dynamic and immersive shopping experience.

Key highlights of the retail experience at the new T6 will include: The Liquor Libraries, offering premium spirits and a Prohibition Speakeasy; The Green Market showcasing NYC’s finest artisanal goods; The Pavilion, a sanctuary of premium beauty and skincare products; Theater of Dreams, a fragrance haven inspired by Union Square’s Daryl Roth Theatre. In addition, Hudson will open nearly 10,000 square-feet of travel convenience and specialty retail space with stores that will offer travelers everything that they need for their journey.

At the new Terminal 6, the inclusion of local MWBE (Minority & Women-Owned Business Enterprises) and ACDBE (Airport Disadvantaged Business Enterprises) represents a significant step toward generating economic opportunities around JFK Airport and featuring local and diverse businesses is shaping the forthcoming concessions at T6.

JMP has selected businesses that embody the spirit of New York to join the

world-class T6 travel hub – some as joint-venture partners and others as food and beverage concessionaires.

This initiative will enhance the passenger experience while driving and bring lasting, impactful change to the local economy. The selected ACDBE joint venture partners include: Baked Cravings, Neir’s Tavern, Tsion Café, The Nourish Spot, Sullivan-Hernandez Group, Samantha Alexis Consulting, and Kellee Communications.

The local eateries whose brands will be featured in the new Terminal 6 include: Di Fara Pizza, Alidoro Café, BKLYN Blend, Fuku, and Hanoi House.

Steve Thody, CEO, JFK Millennium Partners, said, “We are especially proud of the local and diverse businesses that were selected for our phase one T6 concessions program. These businesses embody the spirit of New York—bold, innovative, and resilient. As they prepare to join us in our world-class terminal, either as concessionaires or joint venture partners – they are sharing not only their amazing expertise, but also the diverse flavors of our surrounding Queens community. We couldn’t have asked for a better group of partners to open our doors within 2026.”



Two of the T6 Phase 1 local concessionaires are graduates of the Institute of Concessions (IOC); Keishon Warren, CEO, BKLN Blend, and Beejhy Barhany, founding owner and executive chef of TSION Café.

BKLN Blend was initially founded by **Keishon Warren** to help support his parents as they approached retirement. Fueled by the love of community, Warren’s mission evolved to focus on serving his community nutritious meals with kindness, recognizing the importance of offering diverse, healthy choices, and intentionally designing the BKLN Blend brand to reflect this commitment. Since 2016, BKLYN Blend has been a staple Black-owned juice bar and health food restaurant in Bedford-Stuyvesant and East New York, Brooklyn.

In speaking of his opportunity as a future concessionaire at Terminal 6, Warren said “As a minority, small business owner, I never thought I’d have the opportunity to be in the airport, but the IOC definitely allowed me to participate in the expansion of the airport. My experience with the IOC program has been transformative and has truly opened doors for me to realize and pursue my

dreams. The connections I’ve made within the airport community and the resources available through the program would not have been easily accessible otherwise.”

“We’re bringing a lot of healthy options into the airport which you don’t typically see when traveling through the airport...so we’re really excited to bring that element into the airport,” added Keishon.

TSION Café, located in Harlem, was founded by Ethiopian-born and Israeli-raised chef and activist **Beejhy Barhany** in 2014, with a mission to nourish the body and soul with culinary blends and fine art. The cuisine at TSION (pronounced ‘see-on’) harmonizes flavors from Ethiopia, Israel, and diverse New York, with a fully vegan and Kosher menu and gluten-free options.

“We are about sustainability and providing healthy and awesome food to the community and eventually to the people that come into the airport. The way we will bring that to the airport will be as consumer packaged goods, our artisanal and nutritious line of handmade Ethiopian dips, chips, sauces, and Berbere spice blends,” remarked Barhany.

As a selected ACDBE joint venture partner at Terminal 6, Barhany discussed her experience in completing the Institute of Concessions program, saying, “Overall the IOC is a great program that gives you an insight into the whole airport operation and airport. It really is a great introduction that gives you a view of what is entailed and what it takes to operate a business in an airport.”

As JFK Millennium Partners continues to bring together local businesses to explore concession opportunities, the JFK Terminal 6 Local Business Marketplace offers retail businesses based in Queens and graduates of the Port Authority Institute of Concessions (IOC) a unique opportunity to enter the airport retail space.

The marketplace will feature five retail and grab-and-go concessions (two kiosks and three inline units) launching in 2026 and 2028. JMP will oversee the design, construction, and costs of building these units! Selected businesses will only need to supply merchandise and staff, and a minimal investment into the space will be required to make it their own. ■



Turn Waiting Time into Engaging Moments Enhance Customer Experience with Premium Print and Digital Content

Make waiting enjoyable with fast and convenient access to over 1,600 national and international newspapers and magazines in 40 languages, available on any device. No subscriptions or apps needed – just seamless integration with your IT infrastructure in your respective corporate design. Elevate your customer service effortlessly.

Contact us to learn more.

Gabrielle Sarmiento
The Traveling Press, LLC
Queens, NY 11355
Phone: 718-353-5416
Email: gabrielle.s@thetravelingpress.com
www.thetravelingpress.com
www.media-carrier.com



Continued on Page 26

AIRPORT EMPLOYMENT OPPORTUNITIES

CUSTODIAN

We have an immediate opening for a custodian who wants to deliver exceptional customer satisfaction. We are looking for custodial members who have strong customer service skills and can work successfully with other team members.

SBM

Job No.: 000228

Janitorial & Facility Services

Full-time

New York, NY 10001

OPERATIONS MANAGER - MIT

The Operations Manager will assist with coordinating and directing operations necessary to carry out contractual responsibilities between SBM and customers, including any and all necessary planning, supervision, budgeting, vendor and supply contact.

SBM

Job No.: 000227

Janitorial & Facility Services

Full-time

Queens, NY, NY 11430

ASSISTANT SITE MANAGER

The Assistant Site Manager will be responsible for directing company programs and implementing company policy to ensure total compliance with contract duties between company and customer by performing the following duties personally or through subordinate managers and/or supervisors

SBM

Job No.: 000226

Janitorial & Facility Services

Full-time

Queens, NY, NY 11430

AIRCRAFT MAINTENANCE TECHNICIAN (JFK)

The Aircraft Maintenance Technician (AMT) is responsible for maintenance and repairs to keep aircraft working safely and efficiently.

Endeavor Air

Job No.: 000225

Aircraft Maintenance

Full-time

JFK International Airport, NY

FLIGHT ATTENDANT (LGA)

Endeavor Air Flight Attendants provide a safe and memorable on-board experience for every customer, every day, on every flight by creating a warm and welcoming environment for our guests.

Endeavor Air

Job No.: 000224

Passenger Services

Full-time

LaGuardia Airport, NY

CARGO PHYSICAL SECURITY SPECIALIST (JFK)

A Cargo Physical Security Specialist focuses on safeguarding cargo during transport, storage, and handling. Our unarmed security officers are at the forefront of homeland security, safeguarding infrastructure and ensuring seamless and secure operations.

Global Elite Group

Job No.: 000211

Airport Security

Per Diem

JFK International Airport, NY

TECHNICAL SUPPORT CONTROLLER

The Technical Support Controller monitors fleet performance daily and provides recommendations for preventative maintenance, ongoing troubleshooting, and/or aircraft recovery.

JetBlue

Job No.: 000222

Flight Operations

Full-time

JFK International Airport, NY

COORDINATOR MAINTENANCE CONTROL

The Maintenance Control Coordinator is responsible for supporting and assisting the Maintenance Controllers and Duty Managers. This Coordinator will provide administrative duties, including email communications, set up of conference calls, and data collection for daily reports.

JetBlue

Job No.: 000221

Flight Operations

Full-time

Long Island City, NY 11101

COORDINATOR- AIRPORT OPERATIONS CENTER

We are in search of an ambitious and proactive coordinator that will provide support to our Airport Operations with handling personnel sick calls, operational coverage, and daily coverage reporting.

Global Elite Group

Job No.: 000215

Airport Security

Full-time

Garden City, NY 11530

HUMAN RESOURCES ASSISTANT

This is a local based role out of NYC.

You will be responsible for providing administrative support to the HR department on all personnel matters to ensure accurate and timely processing in accordance with local legislation and QR policies.

Qatar Airways Group

Job No.: 000218

Office & Administrative Support

Full-time

New York, NY 10118

HUMAN RESOURCES MANAGER

The HR Business Partner effectively builds relationships and serves as the liaison between leadership, employees, shared services, and human resources departments to design, execute, communicate, and monitor human resources initiatives and programs across business lines.

Unifi Aviation Services

Job No.: 000208

Office & Administrative Support

Full-time

Jamaica, NY 11430

FLIGHT ATTENDANT (JFK)

Endeavor Air Flight Attendants provide a safe and memorable on-board experience for every customer, every day, on every flight by creating a warm and welcoming environment for our guests.

Endeavor Air

Job No.: 000223

Passenger Services

Full-time

JFK International Airport, NY

AIRPORT EMPLOYMENT OPPORTUNITIES

REGIONAL AIRPORT SERVICES MANAGER

The role is responsible for ensuring that the Airport and other airport operations under your jurisdiction run smoothly, cost-effectively, and in accordance with safety and security requirements.

Qatar Airways Group
Job No.: 000217

Airport & Terminal Operations
Full-time

JFK International Airport, NY

CARGO SALES MANAGER

As the business expands, we are pleased to announce an incredibly exciting opportunity to join our Cargo Sales Team in JFK as a Cargo Sales Manager.

Qatar Airways Group
Job No.: 000219

Cargo Handling
Full-time

JFK International Airport, NY

RECRUITER- AVIATION SECURITY COMPANY

In this position, you will manage full-cycle recruiting for various positions within the head office and outer stations of an ever-growing Aviation Security Company.

Global Elite Group
Job No.: 000216

Office & Administrative Support
Full-time

Garden City, NY 11530

SENIOR ANALYST CREW PAIRING OPTIMIZATION

The Senior Analyst will perform data analysis, data quality assurance, and ad hoc projects that enable system robustness and achievable Key Performance Indicators (KPIs).

JetBlue
Job No.: 000220

Flight Operations
Full-time

Long Island City, NY 11101

AVIATION SECURITY OFFICER

Our unarmed security officers are in the forefront of homeland security, ensuring seamless and secure operations in many of the largest and busiest airports in the country.

Global Elite Group
Job No.: 000214

Airport Security
Full-time/Part-time

JFK International Airport, NY

JFK PASSENGER SERVICE SUPERVISOR - AEROMEXICO

Passenger Service Agents are the first line of defense for our customers! This is a customer-facing role, providing first-class customer service to everyone.

Unifi Aviation Services
Job No.: 000207

Passenger Services
Full-time

JFK International Airport, NY

SCREENING SPECIALIST - CHARTER AVIATION SECURITY

Are you looking for an exciting career in the security field with an opportunity to work alongside the biggest names in sports & entertainment?

Global Elite Group
Job No.: 000213

Airport Security
Per Diem

Garden City, NY 11530

GROUND SERVICE EQUIPMENT UTILITY SPECIALIST

The GSE Utility Specialist plays a very important role in providing quality service to our internal customers and performs work in accordance with guidelines established in the collective bargaining agreement.

United Airlines
Job No.: 000205

Ground Handling
Full-time

Newark Liberty
International Airport, NJ

OPERATIONS MANAGER (JFK AIRPORT)

Our security team is on the forefront of homeland security, safeguarding infrastructure and ensuring seamless and secure operations in many of the largest and busiest airports in the country.

Global Elite Group
Job No.: 000212

Airport Security
Full-time

JFK International Airport, NY

JFK PASSENGER SERVICE AGENT - JAL

This is a customer-facing role, providing first-class customer service to everyone. You are friendly, outgoing, and love to make people happy daily.

Unifi Aviation Services
Job No.: 000203

Passenger Services
Part-time

JFK International Airport, NY

TERMINAL SECURITY OFFICER

Our team members are in the forefront of homeland security, safeguarding infrastructure and ensuring seamless and secure operations in many of the largest and busiest airports in the country.

Global Elite Group
Job No.: 000210

Airport Security
Full-time

LaGuardia Airport, NY

JFK PASSENGER SERVICE SUPERVISOR - AIR CANADA

Unifi Customer Service Agents are the first line of defense for our customers. This is a customer-facing role, providing first-class customer service to everyone. You are friendly, outgoing, and love to make people happy daily.

Unifi Aviation Services
Job No.: 000204

Passenger Services
Internship

JFK International Airport, NY

Visit our website to apply for these featured airport employment opportunities and search for additional jobs at the New York area airports. Register today to allow airport and aviation employers to match your skills with available positions. www.airportworker.com





The Aviation Trail

Follow the Trail in Ohio that Led to the Skies of the World

BY ROBERT G. WALDVOGEL
robertw@metroairportnews.com

If aviation had an equivalent to Mecca, it would most likely be Dayton, Ohio, and its Aviation Trail enables the visitor to trace the lives of the Wright Brothers and their invention of the world's first successful aircraft.

The Wright Brothers and Dayton

Considered the "birthplace of aviation," Dayton itself is inextricably tied to the Wright Brothers.

"In a sense, the Wright Brothers and Dayton came of age together," according to the National Park Service's "Dayton Aviation Heritage" brochure. "It was a nurturing environment for the curious and creative pair. From childhood, they tinkered, built, and showed an entrepreneurial bent-tendencies

that found an outlet in the print shops they ran from 1887 to 1899."

Although the foundation of some of their work was laid by earlier aviation predecessors, such as Sir George Cayley, Clement Ader, Otto Lilienthal, Octave Chanute, and Samuel Pierpont Langley, they themselves were the first to successfully fly a controlled, powered, heavier-than-air aircraft on December 17, 1903 at Kill Devil Hills, North Carolina, in the form of the Wright Flyer because they had applied a systematic approach to solving the technological and aerodynamic problems associated with flight, focusing on the three main parameters of lift, propulsion, and balance and control.

"Theoretical work in Dayton lay behind the revolutionary control system employed at Kitty Hawk, North Carolina," the "Dayton Aviation Heritage" brochure continues (ibid). "The aircraft they assembled there

was made from components fabricated in their hometown bicycle shop."

The Aviation Trail

As part of the larger National Aviation Heritage Area, the Aviation Trail provides insight into the Wright Brothers' early lives, influences, and their later perfection of the airplane.

"The Dayton Aviation Trail was established in 1981 by Aviation Trail, Inc., whose mission is to preserve and promote Dayton's unique aviation heritage, starting with the invention of the airplane by Wilbur and Orville Wright," according to the Dayton Aviation and Convention Bureau.

Its interpretive attractions are many.

Starting point, perhaps, is the Wright-Dunbar Interpretive Center, located in the Hoover Block Building section of the complex, where the famous brothers

Continued On Page 25



LOGISTICS OPPORTUNITIES AT JFK & LGA AIRPORT



WAREHOUSE AGENT

\$19.75/HR



RAMP AGENT

\$19.75/HR



CARGO AGENT

\$19.75/HR

Location: New York Career Center
90-04 161st Street, #201
Jamaica, NY 11432

Date: Friday, January 31, 2025

Time: 9:00AM - 3:00PM

Walk-Ins Welcome!

New Clients: Scan Code Below



<https://www.caonynj.com/applicant-registration/>

Existing Clients: Email your Account Manager to apply



Business attire
recommended



Masks recommended



Please practice
social distancing

All applicants must present:

- Social Security Card (unlaminated)
- State Driver's License, Learner's Permit, or Non-Driver's ID
- Working Documents Required
- Will be Drug Tested (cannabis included)

New York Career Center



(718) 523-7100



www.caonynj.com

Follow us on Social Media



THE TIDES
AT ARVERNE BY THE SEA

Now Leasing

We are only
20 Minutes
to JFK

Discover a new wave of living
with incredible beachfront rental residences.
The Tides is a combination of amenity-rich,
modern living in a convenient location near the city & ocean.

- ~ Fitness Center ~ Rooftop Pool & Sundeck
- ~ Grilling Stations ~ Game Room ~ Movie Theater
- ~ Indoor Lounge ~ Work Spaces ~ Catering Kitchen
- ~ Concierge Services ~ Secure Package Delivery
- ~ Steps from the Beach



Studio, 1, 2 & 3 Bedroom Apartments
Priced from \$2,750* to \$5,000* per month

tidesnyc.com | 347-808-4020

OPEN DAILY 10 am - 5 pm

6804 Tides Road, Arverne, NY 11692 (Arverne by the Sea A train stop)

*Prices and availability are subject to change without notice. Actual onsite photos shown. Equal Housing Opportunity.



**MAKE SURE TO ASK ABOUT SPECIAL INCENTIVES
FOR AIRPORT & AIRLINE WORKERS**

www.tidesnyc.com

Continued From Page 22

established their printing business between 1890 and 1895. Adjacent to it is the Aviation Trail Visitor Center, which features exhibits on all aspects of their lives, from childhood to their aeronautical experiments.

Printing led to bicycles, as can be gleaned in the Wright Cycle Company, another Aviation Trail sight. By late 1892, the joint Wilbur-and-Orville printing venture, already highly successful, had begun to diminish in importance, and interest turned to personal transportation. Both brothers had, after all, been mechanics and excellent riders and, with sufficient funding, opened a sales shop on West Third Street in Dayton. With increasing demand, and the emerging need for repairs and servicing, they moved to several successively larger shops, ultimately designing their own bicycle brand, the Van Cleve, thus forming the Wright Cycle Company.

The bicycle, however, only proved to be the first step to the airplane. Both were mechanically based, prompting the inseparable pair to create a so-called “technology transfer” from it to the airplane by analyzing the commonalities between their control methods. It was, in fact, in the back of just such a bicycle shop where the world’s first aircraft took shape.

The brick Wright Cycle Shop located at 22 South William Street next to the Hoover Block, one of only two original Wright Brothers buildings still standing in their original locations in the Wrights’ West Side neighborhood and a National Historic Landmark, was occupied between 1895 and 1897. Today, the building features its



One of only two original Wright Cycle Shop buildings still standing in their original locations in the Wrights’ West Side neighborhood and a National Historic Landmark.

original wood plank floors, a workshop, several Wright Van Cleve bicycles, and interactive displays demonstrating the application of bicycle technology to aerial design.

Another significant Aviation Trail site is Huffman Prairie Flying Field. Although initial flight experimentations occurred in North Carolina, it had quickly become difficult to continue flying from there for three primary reasons:

The distance between North Carolina and Ohio to repair one of many parts in the more fully-equipped Dayton workshop had become prohibitive.

The sand on Kill Devil Hill would ultimately damage the engine.

Correct wind direction, tantamount to flight, often failed to materialize, resulting in countless days of inactivity.

In order to remedy the deficiencies, the Wrights received permission to use an 84-acre cow pasture located nine miles northeast of Dayton called “.” Its layer of clay and frost heaves hindered tree growth yet provided a surface soft enough to cushion hard landings.

It was from this field that they tested the successor to the original Wright Flyer, the Wright Flyer II. Powered by a larger, 15-16 hp engine with increased propeller width, the modified, more ambitious design featured white pine wing spars with spruce; a longer, 40-foot wingspan; reduced wing camber; a larger, aft-relocated fuel tank; and an almost 300-pound gross weight. Take-offs were achieved with a 250-foot-long wooden launch rail, considered the world’s second runway after that used in Kill Devil Hills.

Because projected winds often failed to produce sufficient airspeed in which to become airborne, however, a 1,200- to 1,600-pound catapult, erected on September 4, 1904, generated the required 28-mph aerial speed.

Of the 105 mostly-short flights conducted in 1904, the longest covered three miles, and the airplane remained aloft for

Continued On Page 26



The replica rail and catapult system used by the Wrights to propel their airplanes at takeoff.

Continued From Page 25

five minutes, eight seconds. Between 1910 and 1916, the Wright Company operated a flying school there, training more than 100 of the world's first pilots for the Wright Exhibition Team and the military. In 1917, the US Army Signal Corps purchased the field, along with 2,000 adjacent acres, and renamed it Wilbur Wright Field, subsequently establishing Wright-Patterson Air Force Base on it in 1948.

Today, Huffman Prairie Flying Field, the world's first "airport," remains exactly the way it was during the Wright Brothers' test flights, with a replica of their 1905 hangar (again the world's first), a reproduction of their catapult system, and National Park Service interpretive signs.

The nearby Huffman Prairie Flying Field Interpretive Center offers exhibits that focus on the 1904-1905 experimental flights, the 1910-1916 flying school, and the history of Wright-Patterson Air Force Base.

The Wright Flyer III, yet another important Aviation Trail sight, is located in Carillon Historical Park, a 65-acre outdoor museum opened in 1950 consisting of 24 attractions which deal with invention, settlement, industry, and transportation. The aircraft, seven feet longer than the Wright Flyer II and the third design evolution after the original Wright Flyer, featured decoupled wing-warping and rudder controls for the first time, the former the initial method of banking along the lateral axis. With its three axes of flight—pitch, roll, and yaw—thus independently controllable by September of 1905, the design, with larger horizontal and vertical stabilizers and upward-curving skids, eliminated turn-induced stall tendencies and was able to perform a wide range of aerial maneuvers, including banks, circles, and figure-eights. With an endurance exceeding 30 minutes, it provided the training aircraft in which countless others learned to fly.

A 1908 modification entailed the installation of a more powerful engine, reconfigured controls, and, for the first time, passenger provision on the lower wing surface.

The Wright Flyer III, housed in Carillon Historical Park's Wright Hall, was restored under the personal supervision of Orville Wright himself.



National Museum of the United States Air Force

The National Museum of the United States Air Force, adjacent to Wright-Patterson Air Force Base and part of the Aviation Trail, is the world's largest and oldest military aviation facility and features more than 360 aircraft and missiles and some 6,000 historical artifacts housed in 19 acres of indoor display hangars spanning the history of aviation from the Wright Brothers to current stealth aircraft technology. It contains an atrium entrance, an IMAX theater, a gift shop, a bookstore, a café, the National Aviation Hall of Fame, an outdoor Air Park and Memorial Park, and seven galleries: Early Years, Air Power, Modern Flight, Cold War, Missile/Space, Presidential Aircraft, and Research and Development/Flight Test Aircraft.

Significant exhibits, to name only a few, include the North American XB-70 Valkyrie, the Wright 1909 Military Flyer, the Bleriot Monoplane, the Curtiss JN-4D Jenny, the Nieuport 28, the Sopwith Camel, the Fokker D.VII, the de Havilland DH.4, the North American B-25B Mitchell, the Consolidated B-24D Liberator, the Boeing B-17G Flying Fortress, the Boeing B-52D Stratofortress, the Convair B-36J Peacemaker, the Boeing WB-50D Superfortress, the Boeing RB-47H Stratojet, and the Lockheed SR-71A Blackbird.

Also on display is a rich collection of former presidential transports, like the Douglas VC-54C Skymaster "Sacred Cow," Franklin D. Roosevelt's purposefully-built airplane; the Douglas VC-118 "The

Independence" used by Harry S. Truman between 1947 and 1953; and the Boeing VC-137C SAM 26000, the 707-320B-modified and first specifically-designed jet aircraft for presidential use designated "Air Force One." During its 36-year flying career, it carried eight sitting presidents and countless dignitaries on historic journeys known as Special Air Missions or "SAMs."

"The William E. Boeing Presidential Gallery gives visitors the opportunity to view an historic collection of presidential aircraft, and walk through four of them, including aircraft used by Presidents Roosevelt, Truman, and Eisenhower, as well as the Boeing VC-137C which was used by eight presidents--Kennedy, Johnson, Nixon, Ford, Carter, Reagan, George H.W. Bush, and Clinton--in addition to carrying heads-of-state, diplomats, and other dignitaries and officials, on many historic journeys," according to the museum.

For an aeronautical professional or just bonafide buff, a visit to Dayton, the "Birthplace of Aviation," is an immersive and enhancing experience. ■



ROBERT G. WALDVOGEL

spent thirty years working at JFK International and LaGuardia airports with the likes of Capitol Air, Midway Airlines, Triangle Aviation

Services, Royal Jordanian Airlines, Austrian Airlines, and Lufthansa in Ground Operations and Management. He has created and taught aviation programs on both the airline and university level and is an aviation author.



MILES Petroleum Co. Inc.

We Keep Things Moving!

AVIATION / FLEET / INDUSTRIAL LUBRICANTS

**Free Delivery • Competitive Prices
Free Oil Analysis On Fuel Tanks & Lubricants**



ANGELA STERN
astern.mileswbe@gmail.com
Tel: (631) 767-8448

ED SULLIVAN
esullivan.mileswbe@gmail.com
Tel: (631) 767-8449

WE ENSURE YOUR CONTRACTURAL COMPLIANCE NEEDS*

Minority & Women Owned Certifications:

WBENC • ACDBE & DBE • Port Authority of NY & NJ • New York State • Nassau & Suffolk Counties



Empire State
Development



THE PORT AUTHORITY OF NY & NJ

* At the Port Authority of NY & NJ, we believe that our operations should reflect the diversity of our community. Because of this diversity, we have enacted a goal to award 20 percent of contracts to Minority-owned businesses, and 10 percent of contracts to women-owned businesses. We encourage each of our partners to also adopt these goals.

**20% participation goal with certified Minority-owned business enterprises (MBE)
10% participation goal with certified Woman-owned business enterprises (WBE)**

www.MilesOil.com

NON-REV TRAVELER

Winter Is a Great Time to Go to Australia

BY JONATHAN KATZ

jkatz@metroairportnews.com

Ok, let's face it, if you want to go to Australia, it's going to be a long trip (15 hours going south and 14 hours on the return) no matter what city you leave from in the United States. So is it worth the trip? Without a doubt, yes! This was our second trip to Australia. Our first trip to Australia was to Sydney, then up to Brisbane, Noosa Heads, and Surfers Paradise.

The concept of this trip was to experience being there, walking the cities, going to the beaches, and relaxing. And why not base this trip on beaches in that it is January in New York, the worst of the winter season, and January in Sydney, the best of the summer season. So we began the trip by flying from New York's JFK International Airport to Los Angeles and then onto Sydney.

Sydney is a beautiful city on the ocean and a delight to walk through. The downtown area is modern and centered around the Circular Quay (pronounced KEY). On the first day of our trip, we took an Uber roundtrip to Sydney's famous Bondi Beach. (We could have just as easily taken an excellent bus system to Bondi, but we worried about jet lag and just wanted the easiest and quickest way.) Bondi Beach was beautiful but mobbed with beachgoers. As crowded as it was, there was no problem finding plenty of room on the beach and enjoying the crystal-clear water. This area of Sydney is quaint and a great beach town, reminding us of Venice, California.

On the second day, we took a ferry from Circular Quay to the first of many potential beaches. Next, we took the Watson Bay Ferry to Camp Cove and Lady Bay beaches. The port area and beaches of Watson Bay were terrific, relaxed, and not crowded.

The last two days of our trip in Sydney were to the beaches of South Mosa via ferry



from Circular Quay. These towns, we were told, are some of the most expensive real estates in Sydney. So here we were on the beaches of Cobblers and Oberlisk; both beaches are clothing optional.

Originally, we were going to remain in Sydney for two days and then drive 100 miles north to Newcastle for great beaches; unfortunately, we experienced three days of bad weather coming into Sydney and, thus, with our interline benefits, we changed our plans and flew to Melbourne and rescued the days of bad weather.

Melbourne was, surprisingly, an extremely modern city with an excellent tram system that went everywhere in the downtown area, free of charge. As a result, walking around Melbourne was a pleasure, highlighted by a considerable walking area on the river, complete with restaurants, stores, and river cruises called Southgate.

We went to two beaches a short distance from downtown, the well-known Brighton Beach and St. Kilda Beach. Brighton Beach seemingly had better water to swim in; however, we really enjoyed the beach town of St. Kilda. This area also had a beautiful beach; unfortunately, the water quality was not as

nice as Brighton's; fortunately, the town was very charming, with restaurants, bars, and a Coney Island-style amusement park. Both beaches are connected easily and inexpensively by train.

In Sydney, we stayed at the elegant Sheraton Grand Hyde Park Hotel, right on beautiful Hyde Park, which was complete with an indoor pool and excellent Sheraton Club on the 21st floor overlooking the city, the park, and the port. The Seafood Feast should not be missed and is open four days a week at the hotel.

We stayed in Melbourne at the extremely modern Marriott Docklands Hotel in the brand-new Docklands Harbor Area. This hotel had an excellent 'M Club' along with an infinity pool on the top of the hotel. This hotel is just a few minutes from the center of the city and ideally connected to the city via three separate tram lines, free of charge.

The airports in both Sydney and Melbourne are very close to each city (within 5 miles). In Sydney, the airport is connected to the city via a train (costs \$20.40 Australian Dollars, \$13.50 US Dollars), and in Melbourne, the airport is connected to the city via a direct non-stop bus at the same cost. ■



YOUR JFK TRANSPORTATION PROVIDER

PROVIDING SAFE & RELIABLE TRANSPORTATION

— SINCE 1995 —



OUR SERVICES

- Airports
- Charter/Groups
- Shuttles
- Flight Crew Shuttles
- Sporting Events
- Distressed Passengers



NANCY VARGAS
Chief Executive Officer
nancy@dh2limo.com



MIKE VARGAS
Chief Operating Officer & Founder
mike@dh2limo.com

79 North Boundary Road, Building 79 JFK, Suite 205, Jamaica, NY 11430

(718) 928 9966 www.DH2Limo.com DH2Limo DH2Transportation DH2Transportation

UPCOMING EVENTS

The most comprehensive listing of New York & New Jersey airport and aviation events available anywhere online. www.metroairportnews.com/airport-events

📅 January 9 & 23

**LGA Kiwanis Club
Monthly Meeting**
Virtual Event
www.lgakiwanis.org

📅 January 13 & 27

**Civil Air Patrol
Falcon Squadron Meeting**
John F. Kennedy International Airport
Jamaica, New York 11430
falconsquadron.cap.gov

📅 January 13

**2025 JFK T6 Operations
Opportunities**
Queens Borough Hall
120-55 Queens Blvd.
Queens, NY 11415
www.anewjfk.com

📅 January 14

**New Terminal One M/W/LBE,
SDVOB & ACDBE Info Session**
Virtual Event
www.anewjfk.com

📅 January 14

ADDAPT Dinner Group
Heritage Club at Bethpage State Park
Farmingdale, New York 1173
www.addaptny.org

📅 January 15

**JFK Airport Customs Brokers
& Freight Forwarders Association
Member Meeting**
Russo's On the Bay
Howard Beach, New York 11414
www.jfkbrokers.com

📅 January 21

**New Terminal One
Concession Opportunities**
Queens Borough Hall
120-55 Queens Blvd.
Queens, NY 11415
www.anewjfk.com

📅 January 22

**Teterboro Aircraft Noise
Abatement Advisory Committee
Meeting**
Teterboro Airport-(TEB)
Teterboro, New Jersey 07608
www.panynj.gov

📅 January 30

**KAAMCO Cargo Operations
Committee Meeting**
John F. Kennedy International Airport
Port Authority Building
Queens, New York 11430
www.kaamco.org

📅 January 30

**JFK Air Cargo Association
Member Luncheon**
Speaker: Brandon Fried, Executive
Director, Airforwarders Association
Vetro Restaurant & Lounge
Howard Beach, New York 11414
www.jfkaircargo.aero

📅 January 30

**Building Inclusivity 2025: M/WBE
Construction Industry Event**
Bulova Corporate Center
75-20 Astoria Boulevard
Jackson Heights, New York 11370
www.queenschamber.org

📅 February 4

**LAAMCO Monthly
General Meeting**
LaGuardia Airport-(LGA)
East Elmhurst, New York 11371
www.laamco.com

📅 February 5

**JFK Airport Rotary Club
Dinner Meeting**
Vetro Restaurant & Lounge
Howard Beach, New York 11414
www.jfkrotaryclub.org

📅 February 11

**Republic Airport
Commission Meeting**
Republic Airport-(FRG)
East Farmingdale, New York 11735
www.republicairport.net

📅 February 12

KAAMCO Member Meeting
John F. Kennedy International Airport
Port Authority Building
Queens, New York 11430
www.kaamco.org

📅 February 25

2025 QCP Evening of Fine Food
2025 Chefs of the Year:
Dr. Sharon B. DeVivo, EdD, Vaughn
College, and **Uzoamaka N.Okoye**,
The New Terminal One
Terrace on the Park
52-11 111th Street
Corona, New York 11368
www.queenscp.org

📅 March 30

**Aviation High School
Street Renaming Ceremony**
Aviation High School
45-30 36th Street
Long Island City, NY 11101
www.aviationhs.net

📅 March 30

**Wings of Legacy:
Aviation High School Boulevard
Dedication Dinner & Dance**
Russo's On the Bay
162-45 Cross Bay Boulevard
Howard Beach, New York 11414
www.aviationhsef.org

📅 April 10

**Bishop Wright Aviation Industry
Awards Luncheon**
2025 Honorees:
▪ **Elizabeth Schuette**
The ARK at JFK
▪ **Frank McIntyre**
JFK Airport Chamber of Commerce
▪ **Rev. Paul Egensteiner**
Metropolitan New York Synod Evangelical
Lutheran Church in America
Russo's On the Bay
162-45 Cross Bay Boulevard
Howard Beach, New York 11414
www.christfortheworldchapel.org

COMING THIS SPRING!



Registration Is Open for the Inaugural Airport Community Soccer Tournament

The Airport Community Foundation (ACF) and its partners are proud to introduce the ACF Cup, a 5-on-5 soccer tournament benefiting the New York airport community. The ACF Cup brings together teams comprised of players from airport companies for a day of competitive play and camaraderie. Beyond the on-field action, the tournament highlights the importance of supporting the next generation of aviation professionals and strengthening community connections while fostering teamwork and friendly rivalry among the airport community.

Register Your Company Team Today to Bring Home the Cup!



WWW.ACF-CUP.COM



Contact us for additional information (718) 750-4441 or info@acfhelps.org



Airport Community Foundation, Inc. is a qualified 501(c)(3) tax-exempt organization registered in the U.S. under Federal Tax ID: 33-1522353. For additional information about the Airport Community Foundation and its partners, visit www.ACFHelps.org



Frequent User Discount Fares Available



\$26⁵⁰

10-ride cards

(valid for 30 days after first use)

\$42⁵⁰

**30-day
unlimited card**

(valid for 30 days after first use)

Check the expiration date on your discounted card at any AirTrain ticket vending machine.



John F. Kennedy
International Airport