

METROPOLITAN Airport News

NOVEMBER 2025

The Journal of the Metropolitan New York Airport Community

Delivering Hospitality

Extending a Gracious and Inclusive Welcome



Also Inside:

A Warm Welcome!

It All Starts With a DoubleTree Cookie

**The Convair 990: American Airlines
Quest for Transcontinental Speed**

Airport Employment, Upcoming Events, & Aviation News



CitiMed

*Complete Medical Care
Injury Doctors*

Work & Accident Related INJURY URGENT CARE

Employment, DOT and FAA Physical Exams

Drug and Alcohol Testing



All Testing Completed On-Site

CitiMed JFK

JFK International Airport Building 78A
78a North Boundary Road
Jamaica, New York 11430

718-656-9500

Mon - Fri 7 am to 11 pm

Sat - Sun 9 am to 4 pm

citimedny.com



PUBLISHER

Kathryn Bliss
kbliss@metroairportnews.com

EDITOR-IN-CHIEF

Julia Lauria-Blum
jblum@metroairportnews.com

CREATIVE DIRECTOR

Raymond F. Ringston
rringston@metroairportnews.com

PHOTOGRAPHER

Beverly Holder
bholderphoto@gmail.com

COMMUNITY RELATIONS

Roberta Dunn
rdunn@metroairportnews.com

ADVERTISING

Edward J. Garcia
egarcia@metroairportnews.com

EDITORIAL CONTRIBUTORS

Tanya Austin
taustin@metroairportnews.com

Maureen Katz
mkatz@metroairportnews.com

Jonathan Katz
jkatz@metroairportnews.com

Robert G. Waldvogel
robertw@metroairportnews.com

**METROPOLITAN
AIRPORT NEWS**

JFK International Airport
PO Box 300877
Jamaica, NY 11430
Tel: (347) 396-0904
info@metroairportnews.com

www.metroairportnews.com

Permissions: Material in this publication may not be reproduced, stored in a retrieval system, or transmitted in any form or by any means (electronic, mechanical, photocopying, recording, or otherwise) without the prior written permission of the publisher.

The views and opinions expressed in *Metropolitan Airport News* are those of the authors and advertisers, and do not necessarily reflect the policy or position of the publisher. Articles presented in this publication are for general information and educational purposes and do not constitute legal or financial advice.

©Copyright 2025 by Airport Media, Inc.
All rights reserved • Printed in the USA

Empire State Development
Certified MWBE
Woman-Owned Business Enterprise

New York Press Association
NYFA

Welcome to the November issue of *Metropolitan Airport News*. We are officially in the Holiday Season, which means increased passenger traffic and weather events, which equals stress, for sure. As an airport community, we plan, prepare, and test year-round for this critical season in the Northeast. There will be hiccups for sure; however, practice makes perfect, and we aim to make it look flawless to the traveling public.

All of that strategic planning carries over from Operations to Hospitality, the topic of this month's issue. Yes, we need to move people and cargo safely and efficiently from point A to point B, but we want the customer experience to be top-notch. It can be a difficult time for so many; the amenities available to travelers are designed to make them feel immersed in the local landscape and to help them actually enjoy the ride. Many airports around the world have done such an incredible job that their air terminals have become destinations in their own right. Two hours early? Why not arrive four hours early and enjoy all that has been curated for you? Art, dining, retail, and entertainment – it's all there.

At *Metropolitan Airport News*, we have been bringing you the positive angle of all things airport and aviation for almost 10 years. We aim to share with you all the great things going on in the airport community, highlight exciting opportunities for business and personal growth, inform you with interesting historical features, and entertain you with dynamic stories from around the world. The contributors to each issue bring decades of experience and are delighted to share their industry insights with you. We hope you are enjoying the content we deliver each month and that you feel the positivity we intend to convey. We welcome your feedback at www.metroairportnews.com/contact

Visit our website to register and to check out the steady stream of current articles and information for the airport community. www.metroairportnews.com

I hope you enjoy the issue, and I will see you around the airports!



KATIE BLISS, *Publisher*
kbliss@metroairportnews.com



ON THE COVER

"I ♥ NY" is a slogan, a logo, and a song used since 1977 to promote tourism in the state of New York. The service-marked logo appears in souvenir shops, brochures, and airports throughout the state. The logo, created by famed graphic designer Milton Glaser in 1976 while in the back of a taxi, was drawn with red crayon on scrap paper. The original drawing is on display at the Museum of Modern Art in Manhattan.

Sustainability Is At the Forefront of Everything We Do



*Proudly serving
New York and the
Tri-State area for
more than 20 years*



Get the Royal Advantage!

Compactor & Container Service
Demolitions & Clean Out
Document Shredding • Composting & More!

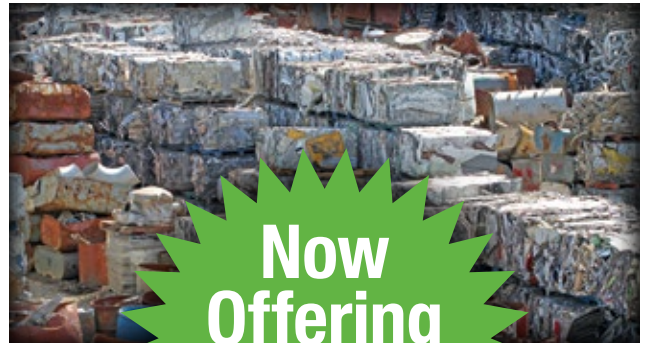
SINGLE STREAM MATERIAL RECYCLING

With the use of our Single Stream Material Recycling Facility, Royal helps to increase waste diversion rates up to 90%.

ROYAL
Waste Services, Inc.

(718) 526-2623

Call today for more information,
or to speak with a Royal Waste
Green Team Sustainable Consultant



**Now
Offering
Metal Recycling
With Rebates**

www.royalwaste.com

EDITOR'S NOTEBOOK

Hon. John Goglia, Enshrined In the 2025 National Aviation Hall of Fame

November is National Aviation History Month. The month-long observance honors the achievements and innovations in American aviation, including the people who made them possible. The celebration covers the entire history of flight, from its earliest forms, such as kites and gliders, to significant modern-day developments, innovations, and space exploration. It recognizes the importance of the aviation industry today, its role in society and the economy, and supports the work of those who maintain and advance it.

Since its foundation through an Act of Congress in 1964, the **National Aviation Hall of Fame** has fulfilled their mission to honor the men and women who have excelled in the field and who serve as a beacon and inspiration for future generations.



(L.-R.): Ken MacTiernan with Hon. John Goglia.



On September 19, 2025, the **Hon. John Goglia** was inducted into the National Aviation Hall of Fame for his contributions to the aviation industry over the course of his career.

John is an internationally recognized aviation safety expert and the first FAA-certified aircraft mechanic appointed to the **National Transportation Safety Board (NTSB)**. He began his aviation career as a licensed aircraft mechanic with United, Allegheny, and US Airways, later operating his own successful aircraft service company.

Between 1995 and 2004, he served as an NTSB board member, where he brought a maintenance perspective to accident investigations and championed airport safety, aircraft maintenance integrity, and family assistance initiatives. John played a pivotal role in raising awareness of aging wiring, crash rescue operations, and wildlife hazards at airports, thereby influencing international aviation safety standards. He was the recipient of the FAA Mechanic of the Year Award in 1994, a founding member of the **National Coalition for Aviation Education**, and the founder and President of the **Aerospace Maintenance Council**, amongst his many other accomplishments.

Ken MacTiernan, in his third-decade of service as an AMT (Aviation Maintenance Technician), attended the 2025 Aviation Hall of Fame Induction, and recently posted on the 'Friends of Charles E. Taylor' social media page that John is only the second person to be inducted into the National Aviation Hall of Fame as an AMT...with the first inductee being Wright Brothers mechanic, Charles E. Taylor. "He's my friend, my colleague, and my mentor. John is bringing recognition and respect to all AMTs," wrote MacTiernan.

The Hon. John Goglia is an adjunct professor in the management department at **Vaughn College School of Aeronautics** in East Elmhurst, Queens, where he continues to share his knowledge with the next generation of aviation professionals. He continues to advance aviation safety through writing, consulting, and public speaking, and has authored several columns and books for leading aviation publications.

A handwritten signature in blue ink that reads "Julia L. Blum".

JULIA LAURIA-BLUM, Editor-in-Chief
jlblum@metroairportnews.com

COMPANY SPOTLIGHT

Advanced Aviation Team

Mastering the Art of Private Air Travel



From campaign trails to global boardrooms, Advanced Aviation Team (AAT) has earned a reputation for accomplishing some of the most complex private aviation missions in the business. Founded by **Gregg Brunson-Pitts**, the Washington, D.C.-based charter and logistics firm supports corporate, government, and high-profile clients across the U.S. and abroad.

Gregg's aviation story began inside the White House under President George W. Bush, where he started as an intern in the scheduling office and, over time, rose to become Director of the White House Travel Office — overseeing the charter aircraft that fly alongside Air Force One, carrying the press corps, senior staff, and Secret Service. "You learn quickly that there's no room for error," he says—that experience—managing fast-moving operations and unpredictable personalities—shaped how he approaches aviation today.

He launched Advanced Aviation Team in 2015, channeling that White House precision into campaign and executive travel. "Since candidates are on the road for weeks

at a time, we try to make the aircraft feel like a comfortable, familiar space," Gregg says. "Everything—from the catering and lighting to how the cabin is arranged—is meant to make them feel at home between events."

AAT has since become the go-to firm for campaign flying, managing more than 1,100 flights during the Biden-Harris 2020 campaign alone. The company has worked with both sides of the aisle — Steve Forbes, George W. Bush, John Kerry, Mitt Romney, Hillary Clinton, Bernie Sanders, Ron DeSantis, and others — always with the same goal: to keep the entire operation running smoothly behind the scenes.

Outside of politics, AAT plans and manages charters for corporate executives, family offices, and former national leaders. Its operations staff coordinate aircraft, crew, and ground handling from takeoff to touchdown, partnering with security teams to manage multi-stop itineraries, VIP movements, and global missions.

The company also maintains a strong presence in the New York metropolitan area, working daily through LaGuardia

(LGA), JFK, and Newark (EWR). "New York is one of the busiest private aviation markets in the world," Gregg says. "We're constantly moving clients in and out — CEOs heading to Wall Street meetings, families flying to warm-weather getaways, entertainers traveling for high-profile events."

Each airport offers different advantages, and AAT helps clients choose the right mix of proximity, privacy, and logistics. And as public flight-tracking tools have made privacy harder to maintain, more high-net-worth travelers are choosing charter over ownership. "Privacy has become a big part of the conversation," Gregg notes. "With aircraft data now public, charter gives clients flexibility and discretion that ownership can't."

Looking ahead, Gregg sees the next decade of private aviation shaped by sustainability, smarter technology, and service consistency. "Whether it's sustainable aviation fuel, better trip tracking, or more seamless ground coordination, it's about blending innovation with a human touch," he says. "Our job is to make travel effortless — so our clients can focus on what really matters." ■



Advanced
Aviation
Team

Advanced Aviation Team

1440 N Edgewood Street

Arlington, VA 22201

Tel: (202) 350-0908

charter@adavteam.com

www.advancedaviationteam.com

THE LAW OFFICES OF MCINTYRE, DONOHUE, ACCARDI, SALMONSON, & RIORDAN, LLP

PROTECTING YOUR RIGHTS. SECURING YOUR FUTURE.



SPECIALIZING IN:

WORKERS' COMPENSATION
SOCIAL SECURITY DISABILITY
3/4'S DISABILITY PENSION

HURT AT WORK?
CALL US TODAY!

866.557.7500

PROTECTING WORKERS THROUGHOUT NY STATE

CALL US TODAY FOR A FREE CONSULTATION!



inquire@licomplaw.com



licomplaw.com



CAO's In-Person Orientation

Looking to Work at JFK Airport?

Visit our in-person orientation at the
Rockaway Career Center to learn how to get started.
1931 Mott Avenue • Far Rockaway, New York 11691

Call (347) 562-2113 to reserve your spot!

November 26, 2025 • 10:00am-11:15am

Looking to Fill Numerous Positions!



**Council for Airport
Opportunity (CAO)**

Tel: (718) 523-7100

www.caonyj.com

All Applicants Must Present:

- Social Security Card (Unlaminated)
- State Driver License, Learner's Permit, or Non-Driver ID
- Working Documents Required
- Will Be Drug Tested (Cannabis Included)



AIRPORT INTEL

DHL Express Invest \$90 million to Strengthen NYC Area Operations

DHL Express, the world's leading international express service provider, announced a \$90 million investment in the greater New York City area to expand operational capacity and ensure long-term growth across one of its highest-volume U.S. markets. The investment includes new facility leases and capital expenditures for advanced material-handling systems and equipment.

As part of this strategic investment, DHL Express will relocate its Manhattan service center operations from its current location to a new, modern facility at 16 Van Keuren Ave, Suite 100, in Jersey City, NJ, by the end of November 2025.

Located just five miles from Lower Manhattan, the 92,505-square-foot site features a thoughtfully designed layout that enhances operational efficiency and employee safety, with improved accessibility for courier vehicles, on-site charging infrastructure, and upgraded dispatch capabilities, enabling faster and more reliable deliveries to customers throughout Manhattan and surrounding areas. With the addition of new material handling technology, DHL's new facility will have the capacity to sort twice as much volume as the previous facility, doubling from 3,000 to 6,000 conveyable pieces per hour (PPH), significantly boosting throughput and efficiency. "The New York City area is a cornerstone of our U.S. network and a key gateway for international trade," said Greg Hewitt, CEO of DHL Express U.S. "This investment ensures we have the right infrastructure in place to support our customers' growing needs for years to come."

In addition to relocating the Manhattan service center, DHL Express has expanded its footprint in Brooklyn. The company's Brooklyn service center facility recently moved into a new 70,202-square-foot building at 1970 Pitkin Ave, Brooklyn, NY. Nearly triple the size of its former



RENDERING PROVIDED BY DHL

DHL has leased a property in Jersey City, New Jersey, to serve as its parcel delivery center for Manhattan and the surrounding region.

25,445-square-foot site, the new facility provides significantly more room for growth and improved operational flow. With upgraded automation systems, the facility's sort capacity has doubled from 1,500 to 3,000 conveyable pieces per hour (PPH), further strengthening service reliability and speed across the borough.

These enhancements are part of a broader plan to strengthen DHL Express' network across the greater New York City market, integrating facilities in Long Island City, Hauppauge, Brooklyn, and the Bronx. The initiative is designed to balance shipment volumes, relieve pressure on high-demand locations, and improve overall network efficiency.

As part of these optimizations, DHL Express' global hub in Cincinnati/Northern Kentucky (CVG) will now connect directly to Newark Liberty International Airport (EWR). This new Newark connection brings DHL's aircraft closer to Manhattan's primary service center in Jersey City. At

the same time, Brooklyn, the Bronx, Queens, and Long Island will continue to connect via John F. Kennedy International Airport (JFK). The change will help reduce transit times, improve reliability, and further strengthen service performance across the region.

"With this investment, we're not just expanding capacity – we're optimizing how we operate in one of the most complex and dynamic logistics environments in the world," added Hewitt. "Our new facilities and flight connections will allow us to handle increasing shipment volumes with greater speed, reliability, and sustainability, all while continuing to deliver the exceptional service our customers expect from DHL."

The \$90 million investment underscores DHL Express' long-term commitment to the New York metropolitan area and its ongoing mission to connect people and improve lives through fast, reliable international express delivery. ■

AIRPORT INTEL

Air Canada Reveals Special Livery in Collaboration with Disney

The Zootopia 2-inspired aircraft is Air Canada's third Disney-themed livery

Air Canada recently revealed a brand-new “Zootopia 2” themed aircraft livery celebrating Walt Disney Animation Studios’ highly anticipated sequel, only in theatres November 26. This special livery on an Airbus A220 aircraft, Fin 138 will be seen in the skies and at several destinations including Montreal, Toronto, Ottawa, Vancouver, Los Angeles, New York LaGuardia, Denver and Boston.

“This special livery is an exciting addition to our broader Disney relationship. It reminds us that travel, like storytelling, is about imagination, connection, and a little bit of magic,” said **Andy Shibata**, Vice President, Brand at Air Canada. “We’re proud to share this moment with Disney fans and families who love the adventure of travel. We can’t wait to see the movie in theatres, and to spot a special airline in Zootopia, which bears a striking resemblance to our own!”

“We’re thrilled to collaborate with Air Canada to bring the magic of “Zootopia 2” to new heights—literally,” said **Quincy Kelman**, Vice-President of Marketing for Walt Disney Studios Canada. “As Judy Hopps and Nick Wilde return to the big screen,



this collaboration invites fans to embark on an unforgettable journey where story telling meets travel, celebrating the spirit of adventure that defines both Disney and Air Canada.”

Air Canada is also giving Aeroplan Members the chance to win a wild adventure of their own – one of two vacations to Walt Disney World Resort in Florida. Bring your pack, pride or herd and come ready to fist pump your paws and howl your heart out

with Zootopia: Better Zoogether, the all-new 4D show at Disney’s Animal Kingdom Theme Park!

“Zootopia 2” is the third Disney movie-themed livery for Air Canada. In November 2023, the airline unveiled characters from Walt Disney Animation Studios’ “Wish” on one of its Boeing 787 Dreamliners, and in February 2022, the carrier unveiled an A220 livery featuring Disney and Pixar’s “Turning Red.” ■



LaGuardia Airport Terminal B Honors B-Celebrated Recipients

LaGuardia Gateway Partners (LGP) honored Frank Messina and Sal Sanquini, Mechanics at JCM Business Solutions; Diana Ignacio, Barista at NY Creperie; and Joey Nazario, Fleet Service at American Airlines (not pictured) at LaGuardia Terminal B’s quarterly B-Celebrated employee recognition award ceremony, hosted by LGP CEO Suzette Noble.

Diana, Frank, Sal and Joey were nominated by their colleagues for going above and beyond in delivering an exceptional experience at Terminal B. ■

(L-R): Frank Messina, JCM Business Solutions; Diana Ignacio, NY Creperie; Sal Sanquini, JCM Business Solutions; and Suzette Noble, LaGuardia Gateway Partners

AIRPORT INTEL

Inaugural “Queens In Flight” Artists to Be Featured at Terminal 6 at JFK Airport

Work by ‘Queens in Flight’ Artists to be Displayed in Gate Areas Throughout T6’s Main Concourse on Rotating Basis Beginning 2026.

The PANYNJ and JFK Millennium Partners (JMP), announced the first three Queens-based artists who have been selected to be part of the terminal’s inaugural Queens in Flight rotating community art program, which will debut when the new terminal opens its first gates in 2026. Local artists **Kim Okoli**, **Llannski**, and **Garfield Harry** will have their artwork prominently displayed in gate areas throughout the terminal’s departures concourse, joining permanent art installations from 19 world-renowned artists previously announced. The Queens in Flight artists’ artwork will also be available for travelers to purchase on a first-come, first-served basis via QR codes located on their display case.

“Throughout the Port Authority’s \$19 billion transformation of JFK International Airport, we have worked with our private partners to design and build world-class terminals that will create a sense of place that is unique to New York and the borough of Queens,” said Port Authority Executive Director **Rick Cotton**. “Artworks by Queens-based artists and new concessions featuring products from Queens will enliven the new terminal and enrich the unique passenger experience at Terminal 6.”

“As the front doors to our region, the Port Authority’s new airport terminals use magnificent works of art and locally inspired concessions to create an inspiring and unique passenger experience only found in our region,” said Port Authority Chairman **Kevin O’Toole**. “At Newark Liberty’s new Terminal A, at LaGuardia Airport and now at JFK, we are building new passenger facilities unlike any others.”

“T6 is more than just a new airport terminal — it’s a gateway to the world, and we’re proud to have Queens’ own artists and entrepreneurs at the heart of it,” said **Steve**



Queens artists and entrepreneurs with representatives from the Port Authority and JFK Millennium Partners at the Oct. 28th JFK Redevelopment Community Advisory Council.

Thody, CEO of JFK Millennium Partners. “Their work reflects the spirit of our city and the stories that make Queens one of the most dynamic communities in the world.”

JMP partnered with the Jamaica Center for Arts & Learning to develop the program. A selection committee comprised of local arts representatives, JMP and the Port Authority selected the artwork and will ensure the program reflects the borough’s creative spirit.

“Queens has always been a borough close to both my heart and to my personal art journey,” said Kim Okoli, who emigrated to the U.S. by way of Queens and is known for her vibrant mixed-media installations. “The communities in Far Rockaway and Flushing formed my early ideas of what the world looked like: teeming with life and laughter, and so much bigger than I could imagine. My piece that will appear in the new JFK Terminal 6 is my love letter to Queens, with a focus on the shared legacy of the different cultures that made a home for themselves here.”

“Art is how I challenge and show up for myself and for others. Sharing connection, resilience, and a reminder that none of us is alone. My hope is that when someone sees my work, it will give them a moment of recognition and comfort, but also inspiration. Or a proof that we’re moving through reality similarly,” said Llannski, whose work explores identity and heritage through textile and sculpture.

“The creative journey I have embarked on is an immigrant story that started in 1977 when I peered out the window of a Pan American 747 jet and saw the island of Manhattan illuminated at sunset. In that moment, I fell in love with New York as a child and it has created a lasting impact which has informed my photography,” said Garfield Harry, a photographer whose work captures the emotional depth of urban life. “This project feels close to me for many reasons, stirring up memories of why I love my town, fond memories of working at JFK, and the celebration of diversity in Queens. I hope to share some of that with visitors from around the world.” ■



Delivering Hospitality

Extending a Gracious and Inclusive Welcome

BY JULIA LAURIA-BLUM
jblum@metroairportnews.com

The term hospitality originates from the Latin word *hospes*, which means both host and guest. The Latin term evolved into *hospitalitas*, meaning ‘the quality of being hospitable,’ and was later adopted into French and then English, eventually becoming the modern-day word.

At its heart, hospitality centers on making others feel welcome, comfortable, and appreciated. It involves extending warmth, cordiality, and kindness towards guests, visitors, patrons, and people from all walks of life.

The hospitality industry is a vibrant and wide-ranging service sector, encompassing numerous areas such as travel and tourism,

accommodations, food and beverage, entertainment, recreation, and wellness.

Travel and tourism facilitate movement within the hospitality industry, encompassing airports, airlines, railways, cruise lines, car rentals, and tour operators. It works hand-in-hand with tourism, helping guests reach their destination while ensuring a unified connectivity between different hospitality segments. Tourism drives demand for hospitality services, as travelers need places to lodge, dine, and enjoy leisure time.

Accommodations, or lodging, are at the nucleus of the hospitality industry, providing a wide range of lodging options. This includes hotels, motels, bed-and-breakfasts, hostels, and vacation rentals tailored to both leisure and business travelers. This

sector offers convenience and comfort to guests by providing essential services that enable travel and tourism.

As a stalwart of the hospitality industry, Food and Beverage (F&B) is a crucial and widespread segment that includes restaurants, cafes, bars, catering, and hotel dining facilities, all of which also serve local communities. The inclusion of dining within many hotels not only enhances guest satisfaction but also reinforces the strong connection between food services and lodging.

Entertainment enriches the leisure experience through a variety of attractions, including casinos, theaters, sports venues, concerts, festivals, and more. These attractions, on their own, provide enjoyment and engagement to both travelers and the local community.

The focus of the Recreation sector is activities that foster well-being, relaxation, and amusement, such as spas and wellness retreats, fitness centers, sports facilities, and outdoor activities. Many hotels offer wellness experiences that cater to guests seeking activities that promote health and rejuvenation.

Airports and Hospitality: A Synergy

Airports operate as gateways for tourists, business travelers, and leisure travelers. They are strongly interconnected with the hospitality industry as increased air travel drives the demand for travelers who patronize hotels, food and beverage establishments, and local attractions. In turn, hospitality services offered at these gateways are significant sources of revenue for airport operators.

The hospitality industry largely relies on airports as a primary access point for travelers. For this reason, hotels and other hospitality services provide accommodations and amenities for all airline passengers. Consequently, airlines, hotels, and tour operators often team up to offer combined travel packages which may include flights, hotel stays, airport transfers, meals, car rentals, entertainment and recreational vouchers, and more.

The immense redevelopment of La Guardia Airport, JFK, and Newark Liberty International is transforming these gateways into destinations in themselves; places that reflect the identity and culture of the city and country they serve. Adopting hospitality strategies that focus on customer service, cleanliness, design, and functionality, these airports now offer travelers an enhanced experience, making their journey smoother, more personal, memorable, and convenient from arrival to departure.

New York metropolitan airports are evolving beyond complex transit points into cultural showcases that create an immediate sense of place.

From curb to gate and back again, passengers encounter welcoming, sustainable design, world-class art, food & beverage, and hospitable offerings that tell the story of their destination's unique culture. The result is a transformation into truly hospitable accommodations.



TWA HOTEL The Sunken Lounge at the TWA Hotel has been an iconic attraction for travelers since the 1960's.

Integrating with local hospitality businesses and partnering with local brands allows airports to offer unique amenities that extend well beyond a mundane passenger experience. Local chefs who bring authentic regional and global cuisines to airport terminals provide a number of dining options and welcome culinary experiences that meet, and even exceed, the needs of a diverse passenger population.

Many airports now provide entertainment and recreational options to enhance a passenger's experience. Airline lounges and those provided by outside vendors offer relaxation, workspaces, and complimentary refreshments. Additionally, many airports have spas, wellness centers, and game rooms for those seeking rejuvenation and downtime before a flight or during a long layover.

Conferences, corporate gatherings, trade shows, and festivals are also a specialized sector of the hospitality industry. A growing demand for unique events highlights this sector's importance in propelling the hospitality business and economic impact, and also provides insights into local arts and entertainment.

Hotels: Checking In to Comfort

Full-service hotels connected to or located near airports serve as hospitality hubs for travelers, offering convenience for

passengers with early or late flights with direct connections to terminals via skywalks, enclosed passageways, or air trains.

On-site airport hotel options include the **Newark Liberty International Airport Marriott**, located directly on the grounds of Newark Liberty (EWR). It offers a wide array of amenities, including on-site dining, a fitness center, on-site parking, park and fly packages, meeting rooms and event space, and complimentary shuttle service for guests to all airport terminals.

The **TWA Hotel at JFK** offers a unique, destination-style hotel experience with contemporary amenities and direct 'tubes' that connect the hotel to the JetBlue Terminal 5 at JFK. Unique amenities include a year-round rooftop infinity pool, a Lockheed Constellation transformed into a cocktail lounge, grab-and-go dining, The Sunken Lounge and Paris Café, a 10,000 sq. foot fitness center, museum exhibits on TWA, a 'Twister Room' (wall-to-wall version of the 1960s game) to play in, a bountiful measure of Jet Age nostalgia and 50,000 sq. feet of meeting and event space.

At every touchpoint, from airports and hotels to restaurants and entertainment venues, hospitality is the art of making guests feel at ease. It is the warm reception and lasting impression that evokes feelings of comfort and enjoyment, contributing to a positive, memorable, and holistic experience for travelers and guests. ■

A Warm Welcome!

It All Starts With a DoubleTree Cookie

For more than 55 years, DoubleTree by Hilton has provided comfort and hospitality for both business and leisure travelers worldwide, aiming to make guests feel welcome through a philosophy of comfort and kindness.

DoubleTree Hotels are famous for their tradition of greeting guests with their signature, warm DoubleTree chocolate chip cookie at check-in, exemplifying a cordial welcome and a comfortable stay. For more than 30 years, the simple gesture of offering the iconic DoubleTree Cookie to their guests has become synonymous with the DoubleTree's warmhearted brand of service that makes travelers feel genuinely welcomed and cared for.

The time-honored warm cookie tradition began in 1986 when DoubleTree by Hilton introduced its delectable signature cookie amenity to guests as a way to build brand loyalty through a nightly turn-down service. Nine years later, in 1995, the DoubleTree chocolate chip cookie amenity was transferred to front desks, reaffirming the brand's philosophy of true hospitality.

At the 385-room **DoubleTree by Hilton JFK Airport**, Executive Chef, **Mery Jordan** arrives at the hotel each day to oversee kitchen operations, as well as the on-premise baking of the iconic DoubleTree Cookie to be given to hotel guests daily upon check-in.

Mery Jordan's 43-year culinary career began in Bulgaria, her birthplace, and she moved to New York 30 years ago, where she attended the New York Restaurant School in Manhattan, thereafter working at several 5-star dining establishments.

Upon walking into the hotel's kitchen, the warm, sweet aroma of vanilla, butter, and sugar, with hints of cinnamon and chocolate, fills the air. Baking sheets rest on the kitchen's stainless steel counter, laden with individual scoops of freshly mixed cookie dough, awaiting their turn in the oven. After about 17 minutes of baking time, as Chef Mery pulls the sheet pans from the oven



(L.-R.): Wilmann Borgella, Mery Jordan, and Angel Inamagua

brimming with warm, chewy, delectable cookies bursting with semi-sweet chocolate morsels, rolled oats, and chopped walnuts, her eyes sparkle with delight.

With the assistance of cooks **Wilmann Borgella** and **Angel Inamagua**, 400 DoubleTree chocolate chip cookies are produced each day. "We bake about 3,000 a week and around 150,000 of these cookies for our guests a year ... at this hotel alone," says Exec. Chef Mery.

Additionally, on August 4, 2023 (National Chocolate Chip Cookie Day), DoubleTree added a new soft chocolate chip cookie to its hotels to accommodate guests with food allergies. In collaboration with Partake Foods, a minority-owned, women-led company known for its allergen-free products, the new cookie is gluten-free, vegan, nut-free, and is packaged in its own individual wrapper. So,

when guests check into any DoubleTree U.S. location, they can ask for the allergy-friendly cookie in place of the original.

DoubleTree at Home, www.doubletreeathome.com, also offers its famous chocolate chip cookies for purchase, which include six hand-packed cookies in a decorative tin delivered right to your home!

More than 20 million are consumed every year, and in 2019, the DoubleTree chocolate chip cookie even became the first food to be baked in space during experiments aboard the International Space Station inside a prototype oven designed to make long-duration space travel more hospitable.

It all goes to show you that even the simplest and thoughtful gestures of kindness are captured in the moments of quiet pleasure and hospitality that make you smile with gratitude. ■

ASAK



**CARGO IN MOTION,
GROUNDED IN RELIABILITY,
WHERE SOLUTIONS TAKE FLIGHT.**

- GROUND HANDLING
- PASSENGER SERVICES
- GSE MAINTENANCE
- ★ - CARGO & MAIL HANDLING ★
- FUMIGATION SERVICES
- ANCILLARY SERVICES
- SNOW REMOVAL & DE-ICING



**VETERAN OWNED & OPERATED,
LOOKING FOR A FEW GOOD PEOPLE.
AN EQUAL OPPORTUNITY EMPLOYER.**



**FOR FURTHER INFO
WWW.ASAK.AERO**



The Convair 990: American Airlines Quest for Transcontinental Speed

The Battle between Inferior Technology and Superior Competition

BY ROBERT G. WALDVOGEL
robertw@metroairportnews.com

Restricted by Civil Aeronautics Board route and fare authorizations back in the early 1960s, and left with little choice but to operate Boeing 707s and Douglas DC-8s at the time, airlines had few options with which to compete with one another and attract passengers. American, however, sought to differentiate itself on the transcontinental route by offering higher speeds and therefore shorter flying times with a new aircraft, the Convair 990.

Design Origins

Although smaller and lagging behind Boeing's 707 and Douglas's DC-8, the aircraft, in its initial CV-880 form, featured the same overall configuration as the Boeing and Douglas contenders, with four wing pylon-mounted engines, a swept wing, and a conventional tail. But it differed in two fundamental ways: it introduced a narrower fuselage, which was only wide enough for five-abreast coach seating and therefore offered reduced drag, and 11,200 thrust-pound, cowling-encased, aft-fan General Electric CJ-805-3 engines.

While it appeared as if it would compete with these quad-engine jets, Convair believed that they offered too much capacity on some of the routes they served, leaving it to design what was then considered the first intermediate-range and capacity jetliner.

The intended aircraft was, to a significant degree, dictated by Trans World Airlines, which, controlled by Howard Hughes, determined its performance and specifications.



American Airlines Convair 990 colorized by Benoit Vienne.

Yet Convair unknowingly placed its program on a course of failure. It could have seized the opportunity to design an aircraft for a segment that had no competition. Neither Boeing nor Douglas had available engineering talent or even production capacity to launch such a design at the time, and Convair's own reputation would certainly have proven an advantage in light of its earlier, highly successful piston series of short-range airliners.

With a 23,150-pound payload capability, the Convair 880 had a 184,500-pound maximum takeoff weight and required a 5,200-foot runway. Rate-of-climb at this weight was 3,700 fpm. Its 615-mph cruising speed qualified it as the fastest commercial jet airliner at the time. The range with a first-class payload was 3,450 statute miles.

Service Entry

Despite obstacles that had plagued the Convair 880's design definition, the aircraft that first took to the sky from San Diego's Lindbergh Field on January 27, 1959, exuded speed. A narrow, drag-reducing fuselage extended from its pointed nose, its razor-thin wings were swept back, and its turbofans were housed in long, thin nacelles. It subsequently landed on Coronado Island's North Island Naval Air Station after a successful maiden flight.

During its 14-month flight test program, the three examples that partook of it more than demonstrated their intended performance superiority: they achieved Mach 0.93 speeds, which exceeded its 0.89-maximum.

Continued On Page 19



OPENINGS AVAILABLE FOR

Duty Manager and Supervisor
Office Agents • Warehouse Agents • Tractor Trailer Drivers

REQUIREMENTS & QUALIFICATIONS

Must be at least 18 years old • Must be able to lift 70 lbs. on a regular basis (Warehouse)
Valid driver's license with excellent driving record

Must Pass 10 year background check • Must have authorization to work in the U.S.

Starting Salary \$19.00+ per hour for Warehouse and Office Agents

EMAIL RESUME TO:

CPILARINOS@AGI.AERO

For immediate consideration, please stop by our JFK Facility
Delta Cargo Building 21A Room 202 between the hours of 10:00am & 1:00pm

Please bring your resume and ALL government I.D's.

Alliance Ground International provides airline cargo handling services to 55 airlines at thirteen airports: Atlanta, Chicago, Fort Lauderdale, Kansas City, LaGuardia, Las Vegas, Los Angeles, Miami, Newark, New York JFK, Orlando, Salt Lake City and San Francisco. Warehouse and ramp operations schedules are constantly adjusted to flight operations. With partners such as Cargo Force and The Cargo Security Company; Alliance Ground International can be your "one-stop-source" for all of your cargo handling needs. The culmination of years of experience with its industry partners, Alliance Ground International offers a vast range of services: Cargo Handling, Ground Handling, Mail Handling, Passenger, and Security.

WWW.AGI.AERO



YOUR JFK TRANSPORTATION PROVIDER

PROVIDING SAFE & RELIABLE
TRANSPORTATION

— SINCE 1995 —



OUR SERVICES

- Airports
- Charter/Groups
- Shuttles
- Flight Crew Shuttles
- Sporting Events
- Distressed Passengers



NANCY VARGAS
Chief Executive Officer
nancy@dh2limo.com



MIKE VARGAS
Chief Operating Officer & Founder
mike@dh2limo.com

79 North Boundary Road, Building 79 JFK, Suite 205, Jamaica, NY 11430

(718) 928 9966 www.DH2Limo.com DH2Limo DH2Transportation DH2Transportation

Continued From Page 16

Although the type should theoretically have been inaugurated into service by TWA, its launch customer and, in many respects, its designer, the honor fell instead to Delta Air Lines. Hughes, source of both catalyst and conflict, was once again behind the obstacle.

Oblivious to TWA's financial capability, he ordered 33 707s and 18 CV-990s, an advanced, higher-performance successor to the CV-880, despite the fact that he neither needed such a massive fleet nor could determine which types were appropriate for which routes. Because his own millionaire status had been reduced to one of debt, he could not afford a 76-aircraft expenditure himself, nor could TWA secure the necessary loans to cover it.

Forced, therefore, to delay their delivery, he was unable to offer TWA its rightful launch carrier status, and he even inhibited further aircraft production with armed guard surveillance.

In the event, Delta, the second to order the type, became the first to operate it, inaugurating "Royal Jet Service" with the CV-880 on May 15, 1960, from Houston to New York-Idlewild with aircraft N8802E configured with a 12-place forward lounge and a 72-passenger, four-abreast first-class cabin. Two other inaugural routes were also flown that day—from New York to New Orleans with N8804E and from New York to Atlanta with N8803E.



Convair 990 operated by Swissair on display in the Swiss Museum of Transport.

By mid-1972, the Convair 880 had notched up nine official speed records during its routine scheduled operations.

Convair 880M

Although the aircraft's superior performance served as its strength, it still failed to meet its performance goals. As a result, Convair designed a minimal-change variant that would increase its speed and range.

Designated CV-880M, it introduced four leading-edge slat panels, two of which spanned the distance between the engine pylons and two of which ran from the outer

powerplant to the wingtip. These, extending forward and down to increase airfoil camber, were actuated in conjunction with the existing, double-slotted trailing edge flaps and improved low-speed lift.

Power was provided by four 11,650-thrust-pound General Electric CJ-805-3B turbofans. This speed, American Airlines concluded, could provide it with the competitive advantage it needed to serve the transcontinental route with an even faster version--at least in theory.

Convair 990

Initially designated Model 30 and then CV-600, it was given the definitive CV-990 name when Convair decided to reflect its 990 kilometers-per-hour cruise speed by it.

Guided by American Airlines, which was viewed as its launch customer, the aircraft was designed to provide higher-speed, all-first-class, transcontinental service, in a four-abreast configuration, in competition with TWA's 707s and United's DC-8s, but it required significant design modification before it could even begin to deliver such performance.

A 10.1-foot-longer fuselage, for instance, resulted in a new 139.5-foot overall length, but its width remained the same, and its cabin could accommodate 96 four-abreast, first-class passengers or 121 five-abreast economy ones. Maximum single-class

Continued On Page 20



Convair 990 Coronado cockpit.

Continued From Page 19

capacity was 149, which was 16 fewer than that of the competing Boeing 720.

The type's most significant modification, however—and also its most visually apparent—was its wing. As the thinnest airfoil ever used on a commercial aircraft, it introduced a 39-degree sweepback—or two degrees more than that of the later widebody Boeing 747—and four anti-shock fairings that appeared like upside-down canoes on the upper wing surface's trailing edge.

Alternatively called “area rule fairings,” “speed bumps,” “conical fairings,” “Whitcomb fairings,” and “blisters,” they measured two feet wide by 24 feet long and prevented shock waves from forming at high speeds, thus reducing drag. The area rule itself, devised by Richard T. Whitcomb in 1953, stated that the cross-sectional area of an aircraft should uniformly increase from nose to tail, provided that the area of a complete airframe smoothly varies along its length. They also served as additional fuel tanks.

“The pods did increase the speed (although not nearly as much as expected), but when they were filled with fuel, the outboard engines developed a dangerous shudder at high speeds,” according to Robert G. Serling in *Eagle: The Story of American Airlines* (St. Martin's/Marek, 1985, p. 341). “Convair had to realign the engines and then encountered a new headache: the realignment produced increased drag.”

Announced on July 30, 1958, after receipt of a 25-firm and 25-optioned order from American Airlines, it first flew three years later, on January 24. A second aircraft followed suit on March 30, and FAA type approval was granted that December after a full production standard flight test program.

Because it was unable to meet performance guarantees, American Airlines immediately cancelled its 25 options and reduced its firm order to 20. Its aircraft were sequentially registered N5601 through N5620, of which five were manufacturer-delivered as the modified CV-990A variant.

American Airlines, whose input significantly shaped the version, took delivery of its first still-unmodified Convair 990, registered N5605, on January 7, 1962, but it was only used for crew familiarization and route-proving purposes until March 18, at which time it inaugurated scheduled service with



American Airlines Convair 990 (N5609) in Dallas, 1962.

two daily round-trips between New York-Idlewild and Chicago-O'Hare with a quartet of them. No faster than the 707, the aircraft covered the westbound sector in two hours, ten minutes, and the eastbound one in one hour, 48 minutes.

American Airlines seriously considered selling or leasing its aircraft without ever operating them, but its 1962 timetable was already established with their inclusion, and it had already begun to dispose of its earlier-generation, piston-powered Douglas DC-6s.

As with other carriers, increased coach class demand and the need to maximize revenue resulted in progressive, less-luxurious cabin configurations—from an initial 92-passenger, all-first class one with a six-place lounge, to a dual-class, 42-first and 57-coach one with a four-place lounge, to a final 34-first and 67-coach one without any lounge.

Like Swissair, which originally inaugurated the type into service as the CV-900A, American Airlines made Herculean efforts to upgrade and modify its fleet itself to this standard at its Tulsa maintenance base in order to transform the design into the original vision of being a true, high-speed jetliner.

But it never fulfilled its intended, coveted, and competitive, all-first-class transcontinental purpose. Instead, the longest sector it

was able to operate was the 2,143-mile one between New York and Phoenix.

“If Convair had met American's specifications, the 990 would have been a winner,” Serling concludes (*ibid.*, p. 341). “It fell far short of those specifications, including the most important one: General Dynamics guaranteed a cruising speed of more than 600 mph—almost 100 mph faster than any other jetliner flying.”

Replaced by the Boeing 727-100, the remaining 18 were subjected to progressive removal, entailing one in 1965, eight in 1967, four in 1968, and five in 1969 after its year-earlier retirement.

Aircraft and vision, in the end, were never realized in a failed battle between technology and speed. ■



ROBERT G. WALDVOGEL

spent thirty years working at JFK International and LaGuardia airports with the likes of Capitol Air, Midway Airlines, Triangle Aviation Services, Royal

Jordanian Airlines, Austrian Airlines, and Lufthansa in Ground Operations and Management. He has created and taught aviation programs on both the airline and university level and is an aviation author.



MILES Petroleum Co. Inc.

We Keep Things Moving!

AVIATION / FLEET / INDUSTRIAL LUBRICANTS

**Free Delivery • Competitive Prices
Free Oil Analysis On Fuel Tanks & Lubricants**



ANGELA STERN
astern.mileswbe@gmail.com
Tel: (631) 767-8448

ED SULLIVAN
esullivan.mileswbe@gmail.com
Tel: (631) 767-8449

WE ENSURE YOUR CONTRACTURAL COMPLIANCE NEEDS*

Minority & Women Owned Certifications:

WBENC • ACDBE & DBE • Port Authority of NY & NJ • New York State • Nassau & Suffolk Counties



**Empire State
Development**



THE PORT AUTHORITY OF NY & NJ

* At the Port Authority of NY & NJ, we believe that our operations should reflect the diversity of our community. Because of this diversity, we have enacted a goal to award 20 percent of contracts to Minority-owned businesses, and 10 percent of contracts to women-owned businesses. We encourage each of our partners to also adopt these goals.

**20% participation goal with certified Minority-owned business enterprises (MBE)
10% participation goal with certified Woman-owned business enterprises (WBE)**

www.MilesOil.com

ON DUTY

News of promotions, appointments, and honors involving professionals within the aviation and airport communities.

■ **Steven Polmans** joins **Swissport** as Global Senior Vice President Cargo. He brings extensive experience from leadership roles across various companies and industry associations, strengthening Swissport's cargo business. Polmans will lead Swissport's global air cargo operations with a focus on developing and driving the global cargo strategy, enhancing commercial performance, and positioning Swissport as an innovative, value-adding service provider.



Steven Polmans

■ **Avports** has announced that **Lisa Kizina** is its new Vice President, Human Resources. Lisa brings over a decade of transformative HR management experience across the aviation, commercial real estate investment and development, and technology space. Most recently, Lisa served as VP, People – Corporate at SSP America, where she advanced operational excellence and developed inclusive and emerging leadership capabilities across the organization.



Lisa Kizina

■ **OTG** announced the appointment of **Tory Roth** as Chief Operating Officer. In this role, Tory will oversee day-to-day operations across OTG's growing network of airport restaurants, markets, and bars



Tory Roth

throughout North America, guiding operational excellence, service innovation, and guest experience strategy. Tory joins OTG with more than two decades of experience in hospitality and foodservice leadership. Most recently, she served as Vice President of Operations at Restaurant Associates, where she oversaw large-scale operations across multiple venues and market segments, leading teams responsible for delivering high-end dining, retail, and corporate hospitality programs.



Nathaniel Pieper

■ **American Airlines Group Inc.** announced that **Nathaniel (Nat) Pieper** has been named Chief Commercial Officer. Pieper, currently CEO of the oneworld alliance, will assume his new role effective Nov. 3. He will report to American's CEO **Robert Isom**. As Chief Commercial Officer, Pieper will lead all of American's commercial strategy, planning and performance across alliances and partnerships, cargo, co-branded credit card program, loyalty, network planning, revenue management and sales and distribution. In addition, he will co-lead the airline's Customer Experience team with American's Chief Operating Officer **David Seymour**. ■

Airside Jobs



Landside Jobs



Terminal Jobs



Off-Airport Jobs



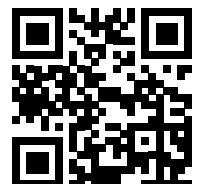
Helping job seekers find airport and aviation-related jobs that match their skills while assisting hiring managers and recruiters to locate suitable candidates.

www.AirportWorker.com

Are You Looking for a New Job?

Airport Employers Are Looking for You Too!

Register Today and Get Found.



AIRPORT INTEL

Local and Luxury Brands Are Coming to the Duty Free and Food Hall at JFK's Terminal 8

60+ new concessions will open in phases throughout the first quarter of 2026.

The PANYNJ, American Airlines and Uni-bail-Rodamco-Westfield announced 24 additional duty-free and food hall brands arriving at John F. Kennedy International Airport's (JFK) Terminal 8 as part of the terminal's expansion, which includes a \$125 million commercial redevelopment program. All leasable space has now been awarded at Terminal 8, with new concessions already starting to open. The expanded terminal will bring iconic local businesses, luxury global brands, and unique new and first-to-airport concepts intended to elevate the passenger experience and highlight the best of New York City.

The Boroughs Food Hall, operated by a joint venture among MERA US and small businesses. New York City-based Tsion

Enterprises, Texas-based Food Cycle LLC and Massachusetts-based South River Partners, will deliver a curated food hall offering passengers an elevated experience spanning local specialties, upscale dining, and comfort food under one roof.

Avolta's Dufry, duty-free operator of Terminal 8, is bringing a collection of luxury boutiques replicating an open-air shop environment inspired by NYC neighborhood markets. Duty-free partners include Queens-based The Nourish Spot, New York-based Sullivan Hernandez Group, Atlanta-based Kellee Communications and Florida-based Tarra Enterprises, Inc.

The Port Authority and URW have worked with community businesses and purveyors of local food & beverage

selections in Terminal 8 which provide a sense of place and ensure that all qualified businesses desire to compete to serve our passengers. We have relied on the assistance of local elected officials and community partners in our extensive community outreach. Alongside the five small businesses participating in the Retail Accelerator program announced at the end of 2024, represents more than 50% NYC-based operators, more than 50% NYC-based brands and over 15 brands new to airports.

Two of the announced concessions will be operated by graduates of the Port Authority's Institute of Concessions, a program that was launched in 2023 to help small, local business owners learn the skills necessary to compete for opportunities at JFK ■



Turn Waiting Time into Engaging Moments Enhance Customer Experience with Premium Print and Digital Content

Make waiting enjoyable with fast and convenient access to over 1,600 national and international newspapers and magazines in 40 languages, available on any device. No subscriptions or apps needed – just seamless integration with your IT infrastructure in your respective corporate design. Elevate your customer service effortlessly.

Contact us to learn more.

Gabrielle Sarmiento
The Traveling Press, LLC
Queens, NY 11355
Phone: 718-353-5416
Email: gabrielle.s@thetravelingpress.com
www.thetravelingpress.com
www.media-carrier.com



AIRPORT EMPLOYMENT

AIRPORT LOUNGE FOOD SERVICE WORKER - JFK TERMINAL 4

As a Airport Lounge Food Service Worker at SodexoMagic, you are a pair of helping hands and a good mood motivator.

Sodexo
Job No.: 000346
Food Service & Hospitality
Full-time
JFK Airport, NY

KITCHEN SUPERVISOR

As a Kitchen Supervisor at Sodexo-Magic you will provides oversight at the direction of management on-site to coordinate routine work activities of service employees engaged in food operations

Sodexo
Job No.: 000345
Food Service & Hospitality
Full-time
JFK Airport, NY

VICE PRESIDENT, OPERATIONS - AIRLINE LOUNGES

SodexoLive! is seeking a dynamic, strategic, and results-driven Vice President of Operations - Airline Lounges to lead, grow, and elevate a growing airport lounge portfolio across the U.S.

Sodexo
Job No.: 000344
Airport & Terminal Operations
Full-time
JFK Airport, NY

AREA MANAGER

The Area Manager will be responsible for managing company programs and area staff to ensure compliance with contract duties between company and customer.

SBM
Job No.: 000343
Sales, Retail, & Customer Support
Full-time
New York, NY 10001

SENIOR MANAGER, COMMERCIAL, TERMINAL 4

The Senior Manager, Commercial is responsible for food & beverage, lounges & passenger services at Terminal 4.

JFK International
Air Terminal (JFKIAT T4)
Job No.: 000342
Airport & Terminal Operations
Full-time
JFK Airport, NY

AIR LOGISTICS WAREHOUSE ASSOCIATE

The Air Logistics Warehouse Agent is responsible for moving and sorting small packages by hand and pushcart from containers inside the warehouse to semi-trucks, in an open air, uncontrolled temperature environment.

Worldwide Flight Services
Job No.: 000337
Warehouse
Full-time
JFK Airport, NY

SUPERVISOR, PASSENGER SERVICES

The role leads a team of front-line agents, supports airline partners, and resolves escalated issues while maintaining compliance with all regulatory and company standards.

Worldwide Flight Services
Job No.: 000336
Passenger Services
Full-time
JFK Airport, NY

ROLL OFF DISPATCHER

Royal Waste has an immediate opening for a Roll-Off Dispatcher to join the team at our site in Queens, NY.

Royal Waste
Job No.: 000335
Trucking & Intermodal
Full-time
Jamiaca, NY 11423

ASSISTANT FOOD AND BEVERAGE DIRECTOR - CHASE LUXURY AIRPORT LOUNGE

We are seeking a talented individual who will commit to the challenges of creating and delivering a culinary-driven, fine-dining experience within a thoughtfully designed travel oasis.

Sodexo
Job No.: 000347
Food Service & Hospitality
Full-time
JFK Airport, NY

RAMP SERVICES SUPERVISOR

The Ramp Services Supervisor oversees and coordinates ramp services operations, ensuring compliance with safety, security, and company standards.

Worldwide Flight Services
Job No.: 000338
Ground Handling
Full-time
EWR Airport, NJ

AIRLINE & COMMERCIAL DEVELOPMENT DIRECTOR

The Airline and Commercial Development Director will play a key role in advancing strategic projects that drive long-term value and sustainable revenue growth across NTO's commercial portfolio including, but not limited to, airline leasing, lounges and other sources of revenue creation for NTO.

The New Terminal One
Job No.: 000334
Airport & Terminal Operations
Full-time
Jamaica, NY 11430

FACILITY MANAGER

The Facilities Manager is a key role, supporting the Director of Facilities and guiding contracted FM, Baggage Handling System, and janitorial providers.

The New Terminal One
Job No.: 000333
Janitorial & Facility Services
Full-time
Jamaica, NY 11430

AIRPORT EMPLOYMENT

COMPLIANCE AND RISK MANAGER

The Compliance and Risk Manager will lead the development, implementation, and oversight of JFK NTO's compliance and risk management programs.

**The New Terminal One
Airport & Terminal Operations**
Job No.: 000332
Full-time
Jamaica, NY 11430

CARGO TERMINAL MANAGER - GROUND HANDLING

Oversee all operational activities within the terminal.

Alliance Ground International (AGI)
Job No.: 000331
Ground Handling
Full-time
JFK Airport, NY

SECURITY GUARD

You will be responsible for a wide range of functions to maintain positive control of the aircraft at all times and ensure the safety of crew members and cargo.

Alliance Ground International (AGI)
Job No.: 000324
Security
Full-time
JFK Airport, NY

WAREHOUSE AGENT

As a Warehouse Agent, you will be essential to increase operational efficiency, company profitability, and customer satisfaction by accurately and safely receiving/storing inbound and outbound shipments.

Alliance Ground International (AGI)
Job No.: 000322
Warehouse
Full-time
JFK Airport, NY

CABIN SERVICE AGENT

Your responsibilities will include maintaining the cleanliness and readiness of the cabin, restocking supplies, and performing essential security checks.

Alliance Ground International (AGI)
Job No.: 000321
Passenger Services
Full-time • Part-time
EWR Airport, NJ

HUMAN RESOURCE GENERALIST

Manages all HR functions for assigned location to include: recruitment, new hire processing, benefits enrollment, worker's compensation.

Alliance Ground International (AGI)
Job No.: 000320
Office & Administrative Support
Full-time
EWR Airport, NJ

HR GENERALIST

The position of HR Generalist will work closely with senior HR management in supporting the HR function in the assigned geographic regions.

Worldwide Flight Services
Job No.: 000315
Office & Administrative Support
Full-time
JFK Airport, NY

AIR LOGISTICS MANAGER ON DUTY

Proactively monitors the work of assigned employees to ensure that customer satisfaction, safety, security, quality and employee relations meet or exceed standards.

Worldwide Flight Services
Job No.: 000314
Cargo Handling
Full-time
JFK Airport, NY

CABIN LEAD - LAGUARDIA AIRPORT

Assigns activities of cabin service agents and ensures completion of tasks.

Unifi
Job No.: 000302
Aircraft Maintenance
Full-time • Part-time
LGA Airport, NY

JFK PASSENGER SERVICE LEAD - ANA

A customer service lead provides customers with information about products and services. It is also their duty to deal with enquiries from customers.

Unifi
Job No.: 000301
Passenger Services
Part-time
JFK Airport, NY

SCREENING SPECIALIST - CHARTER AVIATION SECURITY SERVICES

Global Elite Group provides world-class aviation security through innovation and people committed to excellence.

Global Elite Group
Job No.: 000300
Security
Per Diem
JFK Airport, NY

GROUND MAINTENANCE MECHANIC (STATIONARY) - LGA

The GMM (Stationary) is responsible for the maintenance of stabilized stationary machinery and equipment.

Delta Air Lines
Job No.: 000298
Ground Handling
Full-time
LGA Airport, NY

Visit our website to apply for these featured airport employment opportunities and search for additional jobs at the New York area airports. Register today to allow airport and aviation employers to match your skills with available positions.

www.airportworker.com



AIRPORT EMPLOYMENT

AIRCRAFT MAINTENANCE TECHNICIAN

The Aircraft Maintenance Technician (AMT) is a critical TechOps role at Delta. In this role, you will maintain the proper and safe functioning of Delta's fleet.

Delta Air Lines
Job No.: 000297
Aircraft Maintenance
Full-time
JFK Airport, NY

GROUND MAINTENANCE MECHANIC (MOTORIZED)

As a Ground Maintenance Mechanic (GMM) in a motorized role, you will be a part of Delta's Ground Support Equipment team.

Delta Air Lines
Job No.: 000296
Ground Handling
Full-time
JFK Airport, NY

ENVIRONMENTAL HEALTH & SAFETY MANAGER

The EHS Manager will be responsible for planning, directing, and implementing organization safety program to ensure safe, healthy, and accident-free work environment.

SBM Management Services
Job No.: 000293
Janitorial & Facility Services
Full-time
Jamaica, NY 11430

PREMIUM BARTENDER

The Premium Bartender delivers an elevated guest experience through exceptional service and precise cocktail and food execution at upscale airport dining establishments.

The Blinded Tiger
Job No.: 000291
Food Service & Hospitality
Full-time
JFK Airport, NY

CREW MEMBER

The Crew Member is responsible for performing a variety of duties within a fast food establishment which may include cleaning the food or stock areas, operating fryers & microwaves, manning food preparation production line, assisting in the kitchen area.

Villa Russo at Terminal 4
Job No.: 000290
Food Service & Hospitality
Full-time • Part-time
JFK Airport, NY

SHIFT MANAGER I

The MGRI ensures the restaurant is clean, ready for business, staffed, and operates to high operational standards.

Brooklyn Tea & Market
at Terminal 4
Job No.: 000289
Food Service & Hospitality
Full-time
JFK Airport, NY

CREW MEMBER AT TERMINAL 8

The Crew Member is responsible for performing a variety of duties within a fast food establishment which may include cleaning the food or stock areas, operating fryers & microwaves, manning food preparation production line, assisting in the kitchen area.

Eataly Wine Bar at Terminal 8
Job No.: 000288
Food Service & Hospitality
Full-time
JFK Airport, NY

SHIFT MANAGER II TERMINAL 8

The purpose of the Manager II (MGR II) position is to assist Branch management in tactically executing complex QSR or Casual Dine or similar restaurant management operations.

Eataly Wine Bar
Job No.: 000287
Food Service & Hospitality
Full-time
JFK Airport, NY

TECHNICAL SUPPORT CONTROLLER

The Technical Support Controller monitors fleet performance on a daily basis and provides recommendations for preventative maintenance, ongoing troubleshooting and/or aircraft recovery.

JetBlue
Job No.: 000278
Flight Operations
Full-time
JFK Airport, NY

CDL TRUCK DRIVER

We have an incredible opportunity for a dynamic CDL Truck Driver to join our growing New York Team! Candidates must have a valid Commercial Driver's License (Class A or B) and meet TSA regulations to obtain a PANYNJ ID.

DO & CO
Job No.: 000262
Trucking & Intermodal
Full-time
Jamaica, NY 11430

CARGO PHYSICAL SECURITY SPECIALIST- JFK

A Cargo Physical Security Specialist focuses on safeguarding cargo during transport, storage, and handling.

Global Elite Group
Job No.: 000247
Security
Per Diem
JFK Airport, NY

QUALITY MANAGER

The Quality Manager is responsible for all quality operations within the company, including quality assurance, quality engineering, AS9100 compliance, and the administration of the quality management system.

East/West Industries Inc.
Job No.: 000246
Manufacturing
Full-time
Ronkonkoma, NY 11779

AIRPORT EMPLOYMENT

COMMERCIAL HANDYMAN WITH CDL LICENSE

Street sweeper driver with experience as a maintenance person or similar role.

Aqueous Solutions
Job No.: 000231
Janitorial & Facility Services
Full-time
JFK Airport, NY

AVIATION SECURITY OFFICER (JFK)

Our unarmed security officers are in the forefront of homeland security, safeguarding infrastructure and ensuring seamless and secure operations in the busiest airports in the country.

Global Elite Group
Job No.: 000214
Security
Full-time • Part-time
JFK Airport, NY

TERMINAL SECURITY OFFICER

Our team members are in the forefront of homeland security, safeguarding infrastructure and ensuring seamless and secure operations in many of the largest and busiest airports in the country.

Global Elite Group
Job No.: 000210
Security
Full-time
LGA Airport, NY

FOOD SERVICE WORKER II

This position is responsible for duties involving the preparation and service of food at the facility location assigned or at other locations as directed by department management.

The Port Authority of NY & NJ
Job No.: 000190
Food Service & Hospitality
Full-time
LGA Airport, NY

AIRLINE RAMP TURNAROUND COORDINATOR (EWR)

Hallmark Aviation seeks professional Airline Ramp Turnaround Coordinators at Newark Liberty International Airport—previous airline experience required.

Hallmark Aviation Services
Job No.: 000188
Ground Handling
Full-time
EWR Airport, NJ

WHEELCHAIR ATTENDANT - (HPN)

The Wheelchair Attendant's responsibilities include assisting passengers to and from different airport locations, handling wheelchair equipment, and prioritizing passenger safety.

PrimeFlight Aviation Services
Job No.: 000158
Passenger Services
Full-time
Westchester County Airport, NY

AIRCRAFT MAINTENANCE TECHNICIAN - LGA

The Aircraft Maintenance Technician (AMT) is responsible for maintenance and repairs to keep aircraft working safely and efficiently.

Endeavor Air
Job No.: 000340
Aircraft Maintenance
Full-time
LaGuardia Airport, NY

FLIGHT ATTENDANT

We are looking for service-oriented professionals with a passion for customer service and helping others.

Endeavor Air
Job No.: 000341
Passenger Services
Full-time
JFK Airport, NY

JUNIOR PASTRY SOUS CHEF

We have an incredible opportunity for a dynamic Junior Pastry Sous Chef to join our growing New York Team!

DO&Co
Job No.: 000339
Food Service & Hospitality
Full-time
Jamaica, NY 11430

AIRPORT FACILITY CLEANERS

Seeking maintenance technicians to perform janitorial services, high-end facility cleaning, window washing, and floor care.

Aqueous Solutions
Job No.: 000112
Janitorial & Facility Services
Full-time • Part-time
JFK Airport, NY

AUTO MECHANIC

As an automotive mechanic, you will be responsible for performing skilled automotive work involving inspections, modifications, maintenance, and repairs on complex automotive and special equipment for a diverse fleet, including gas, diesel, hybrid, and electric vehicles.

The Port Authority of NY & NJ
Job No.: 000191
Trucking & Intermodal
Full-time
Jamaica, NY 11430

AIRLINE CENTRALIZED LOAD CONTROLLER (CLC)

Hallmark Aviation Services seeks to build a diverse team of highly motivated individuals to provide outstanding service at JFK Airport.

Hallmark Aviation
Job No.: 000348
Flight Operations
Full-time
JFK Airport, NY

Visit our website to apply for these featured airport employment opportunities and search for additional jobs at the New York area airports. Register today to allow airport and aviation employers to match your skills with available positions.

www.airportworker.com



NON-REV TRAVELER

Washington, DC, Is a Great Place to Visit Even During a Government Shutdown

BY MAUREEN KATZ
mkatz@metroairportnews.com

My husband Jon and I have visited Washington, D.C., many times over the past several years. Our most recent visit was an overnight stay on October 7 this year. Although there was a government shutdown, we had no issues related to this. It was a pleasure not to have crowds of tourists, and all our activities were easy to do. Restaurants and hotels were quiet, but still open. The shutdown's impact extended primarily to attractions that receive federal funds. In the early days of the current government shutdown, virtually all tourist sites were unaffected.

My in-laws are buried at Arlington Cemetery, and Jon and I try to visit their burial sites at least once a year. The Cemetery was open, and there were funerals taking place when we went there. The weather that Monday and Tuesday was beautiful, in the low 80s.

Since we had already visited most of the attractions and memorials, we decided to spend our time in Georgetown. Georgetown was initially established as a tobacco port town in Maryland. In 1967, Georgetown was designated a National Historic Landmark.

There are historical landmarks, cultural attractions, boutiques, and many restaurants in Georgetown. The intersection of Wisconsin Avenue and M Street is considered the center of Georgetown, where most boutiques, bars, and restaurants are located.

At Washington Harbour, located on 'K' Street between 30th and 31st Streets, there are several waterfront restaurants, as well as the Georgetown Waterfront Park and the Key Bridge Boathouse, where visitors can rent a kayak, canoe, and paddle boats. There are also river cruises and water taxis that connect the region's waterfronts.

From Washington Harbour, we took a 45-minute, nonstop sightseeing cruise with Capital River Cruises, a unique way to see some well-known sights from an open-air boat. Sights on this tour included Key Bridge, The Watergate Hotel, Roosevelt Island, The Kennedy Center, The Lincoln Memorial, Memorial Bridge, Curtis-Lee Mansion, Ericsson Memorial, The Washington Monument, the LBJ Memorial, Maritime Memorial, The Jefferson Memorial, and the U.S. Capitol.

Also renowned in Georgetown is Georgetown University, a private Jesuit research university, the oldest Catholic institution of higher education in the United States, and the oldest university in Washington, D.C.


For our overnight stay, we stayed at the Crystal Gateway Marriott in Crystal City, Arlington, Virginia. It is only one subway stop from the Ronald Reagan Washington National Airport. There are only



five stops on the Blue Line subway between Crystal City and Foggy Bottom, which is the metro stop for Georgetown.

In the evening, we went to Alexandria, Virginia, for dinner at the Chart House. It is a worthwhile city to visit and is only seven miles south of D.C. There are only three subway stops from the Crystal Gateway Marriott to King Street Station, which is the beginning of Old Town. The historic center of Alexandria consists of many boutiques, restaurants, antique shops, and theaters. The walk from the King Street subway stop to the Chart House Restaurant is very interesting and worth the exercise. The restaurant was on the Potomac River, and we dined outside, with gorgeous panoramic views of the waterfront and the city. One unique feature of Chart House Restaurants is their famous, very extensive salad bar. During and after the pandemic, most, if not all, of these salad bars were eliminated; however, this one has returned and is better than ever. ■

The LaGuardia Link Q70 Bus to the Subway Is FREE!

The **LaGuardia Link**  Q70 bus provides free non-stop service between **LaGuardia Airport** and the **E F M R 7** subway lines at Jackson Heights. It's a 15 minute ride and buses leave every 8-10 minutes all day.



UPCOMING EVENTS



The most comprehensive listing of New York & New Jersey airport and aviation events available anywhere online. metroairportnews.com/ny-airport-events

📅 November 6

22nd Annual Air & Space Gala
Cradle of Aviation Museum
Charles Lindbergh Blvd.
Garden City, NY 11530
www.cradleofaviation.org

📅 November 6

LAAMCO Monthly General Meeting
LaGuardia Airport-(LGA)
East Elmhurst, New York 11371
www.laamco.com

📅 November 11

ADDAPT Dinner Group
Heritage Club at
Bethpage State Park
Farmingdale, New York 1173
www.addaptny.org

📅 November 12

JFK Airport Rotary Club Lunch Meeting
Hilton Garden Inn
Jamaica, New York 11430
www.jfkrotaryclub.org

📅 November 12

KAAMCO Members Meeting
John F. Kennedy International Airport
Port Authority Building 14
Queens, New York 11430
www.kaamco.org

📅 November 13

PANYNJ ACDBE Certification Webinar
Virtual Event
www.panynj.gov

📅 November 17

The Celebrate Science and Inspiration Gala
Honoring Rick Cotton,
Executive Director, PANYNJ
Cipriani, 55 Wall Street,
New York, NY 10005
www.nysci.org/gala

📅 November 18

MWBE Certification Webinar
Virtual Event
www.anewjfk.com

📅 November 19

JFK Airport Customs Brokers & Freight Forwarders Association Meeting
Russo's On the Bay
Howard Beach, New York 11414
www.jfkaircargo.aero

📅 December 1

Wings Club Meeting
Guest Speaker: **Kyle Clark**, CEO,
BETA Technologies
The Yale Club
50 Vanderbilt Avenue
New York, NY 10017
www.wingsclub.org

📅 November 20

JFK Air Cargo Association Luncheon
Guest Speaker: Andy Kirschner,
Director of Americas Sales in Cargo at
Delta Air Lines.
Vetro Restaurant & Lounge
Howard Beach, New York 11414
www.jfkaircargo.aero

📅 November 22

2025 KAAMCO Annual Gala Dinner
The Seawane Club
Hewlett Harbor, New York 11557
www.kaamco.org

📅 November 29

C-47 Scenic Fall Thanksgiving Rides
Take a short scenic flight with us this
Thanksgiving Weekend in the American
Airpower Museum's WWII Douglas C-47
"Skytrain" Troop Transport.
Republic Airport
1230 New Hwy,
Farmingdale, NY 11735
www.americanairpowermuseum.com

📅 November 30

KAAMCO Cargo Operations Committee Meeting
John F. Kennedy International Airport
Port Authority Building
Queens, New York 11430
www.kaamco.org

📅 December 1

JFK Airport Committee (JFKAC) Quarterly Meeting
Virtual Event
aircraftnoise.panynj.gov/nycar

📅 December 2

JFK Rotary Club Children's Holiday Party
Jet Blue Hangar 81
Jamaica, New York 11430
www.jfkrotaryclub.org

📅 December 5

KAAMCO Cargo Committee Holiday Dinner Dance
Marriott New York JFK Airport
Jamaica, New York 11436
www.kaamco.org

📅 December 9

Republic Airport Commission Meeting
Republic Airport-(FRG)
East Farmingdale, New York 11735
www.republicairport.net

📅 December 11

Wings Club Meeting
Guest Speaker: **Bob Jordan**, CEO,
Southwest Airlines
The Yale Club
50 Vanderbilt Avenue
New York, NY 10017
www.wingsclub.org

📅 December 13

The Christ for the World Chapel Christmas Concert
JFK Airport - Terminal 4
Jamaica, New York 11430
www.christfortheworldchapel.org

📅 December 13-14

Festival of Games
Cradle-Con and Long Island Retro Gaming Expo are proud to present Festival of Games – a holiday-themed extravaganza of shopping and gaming experiences.
Cradle of Aviation Museum
Charles Lindbergh Blvd.
Garden City, NY 11530
www.cradleofaviation.org



Clean. Safe. Compliant.

Full-service cleaning and maintenance programs for airport and aviation facilities.

SIDA Badged with U.S. Customs Seals and PONYA plated vehicles at both JFK & LGA airports.

- PANYNJ Janitorial Maintenance Small Business Enterprise Certified (JMSBE)
- Pre, post, & during-construction cleaning
- Airport lounge detailing and fine cleaning
- Building and office cleaning
- Steam cleaning for all surfaces
- Carpet cleaning & restoration
- Interior and exterior window cleaning
- Building facade cleaning
- Stainless steel cleaning
- Pressure and power washing
- Interior and exterior painting
- General maintenance services
- SIDA badged AOA Janitorial Services for Airport Terminals, Offices, Warehouse, and Hangars
- Ramp, roadway, and warehouse mechanical sweeping
- Foreign Object Debris (FOD) Programs
- Best Management Practices (BMP) implementation and management
- Airport marking painting and removal
- Emergency Spill response
- Bird-dropping cleaning, Bird control installations, including netting and spikes
- Bird strike clean-up
- Catch basin cleaning
- Emergency aircraft cleaning and decontamination
- Heavy-duty equipment and vehicle pressure washing



Aqueous Solutions is a Certified MWBE Woman-Owned Business Enterprise with the Port Authority of New York & New Jersey, State of New York, and New York City

24/7 Emergency Response Hotline: 1-800-294-4950



Located at John F. Kennedy International Airport
1-800-294-4950 • (718) 355-9080
info@aqsolution.com • www.aqsolution.com

Are you a woman working for the Port Authority and seeking professional development and leadership opportunities in the aviation industry?

Come join Women in Aviation Empowered (WAVE)!

WAVE is a chapter of the Port Authority Women's Council (PAWC) that offers the chance to participate in a wide range of enriching events — including community volunteering, clothing drives, airport tours and a speaker series — all while fostering a strong community of women.

Scan the QR code or email debrown@panynj.gov to learn more.

