

METROPOLITAN Airport News

SEPTEMBER 2025

The Journal of the Metropolitan New York Airport Community

The Local Workforce That Keeps Us Flying

Exploring the Potential for Airport Employment

Also Inside:

European Airliners of a Century Ago

Two Day Trip to Kraków, Poland

Airport Employment, Upcoming Events, & Aviation News



Work & Accident Related INJURY URGENT CARE

Employment, DOT and FAA Physical Exams
Drug and Alcohol Testing



All Testing Completed On-Site

CitiMed JFK

JFK International Airport Building 78A
78a North Boundary Road
Jamaica, New York 11430

718-656-9500

Mon - Fri 7 am to 11 pm

Sat - Sun 9 am to 4 pm

citimedny.com



PUBLISHER

Kathryn Bliss
kbliss@metroairportnews.com

EDITOR-IN-CHIEF

Julia Lauria-Blum
jblum@metroairportnews.com

CREATIVE DIRECTOR

Raymond F. Ringston
rringston@metroairportnews.com

PHOTOGRAPHER

Beverly Holder
bholderphoto@gmail.com

COMMUNITY RELATIONS

Roberta Dunn
rdunn@metroairportnews.com

ADVERTISING

Edward J. Garcia
egarcia@metroairportnews.com

EDITORIAL CONTRIBUTORS

Tanya Austin
taustin@metroairportnews.com

Maureen Katz
mkatz@metroairportnews.com

Jonathan Katz
jkatz@metroairportnews.com

Robert G. Waldvogel
robertw@metroairportnews.com

**METROPOLITAN
AIRPORT NEWS**

JFK International Airport
PO Box 300877
Jamaica, NY 11430
Tel: (347) 396-0904
info@metroairportnews.com

www.metroairportnews.com

Permissions: Material in this publication may not be reproduced, stored in a retrieval system, or transmitted in any form or by any means (electronic, mechanical, photocopying, recording, or otherwise) without the prior written permission of the publisher.

The views and opinions expressed in *Metropolitan Airport News* are those of the authors and advertisers, and do not necessarily reflect the policy or position of the publisher. Articles presented in this publication are for general information and educational purposes and do not constitute legal or financial advice.

©Copyright 2025 by Airport Media, Inc.
All rights reserved • Printed in the USA



Welcome to the September issue of *Metropolitan Airport News*. It's hard to believe, but as the airports prepare for snow season, it's still technically summer for a few more weeks. With Labor Day behind us, passenger volumes will start to level off, and we can take a breath before the weather takes over the headlines.

Speaking of Labor Day, this month's issue focuses on the multitude of employment sectors that exist in an airport community, really a city of its own. It's a favorite topic of *Metropolitan Airport News*. We have a strong mission to support and connect job seekers with airport businesses, as well as students with career-ready skills and resources for a successful career in this industry. From technology to tugs, finance to flight ops, janitorial to jet fuel, retail to ramp agents — the opportunities are plentiful, diverse, and pay very well.

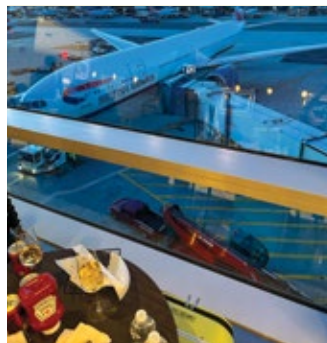
One of the ways that Metropolitan Airport News advocates for businesses and job seekers is through **AirportWorker.com**. You can register online as a Job Seeker or a Job Poster. We've had great outcomes connecting people with a wide range of jobs at the airports. Take a look and share with your friends and family who may be interested in opportunities.

Our local airport community once again came together to honor the victims of the tragedy that took place on September 11th, 2001. It's hard to believe it's been 24 years when the emotions and memories are so raw. I suppose they always will be. As time goes by, listening to the stories and memorials told by young people that were not even born at the time, I know that we have fulfilled our promise that we collectively made on September 12th, We Will Never Forget. There is an entire generation that shares the legacies of those who perished, people they will never meet, but have been eternally memorialized through the love of friends and family. The stories of bravery and valor in those minutes, hours, and days after the attacks will live on forever. The Aviation and Port Authority families mourn with the country and the world, while holding a special torch for those who died in service within the aviation and PA communities.

Visit our website, www.metroairportnews.com, to register and explore the steady stream of current articles and information for the airport community.

I hope you enjoy the issue, and I will see you around the airports!

KATIE BLISS, *Publisher*
kbliss@metroairportnews.com



ON THE COVER

An airport's workforce is distinguished by its extensive diversity, encompassing a broad range of roles, from technical specialists like air traffic controllers, pilots, and mechanics, to customer-facing positions such as baggage handlers, ticketing agents, and essential support functions like security, engineering, maintenance, sanitation, management, and so much more.

Sustainability Is At the Forefront of Everything We Do



*Proudly serving
New York and the
Tri-State area for
more than 20 years*



Get the Royal Advantage!

Compactor & Container Service
Demolitions & Clean Out
Document Shredding • Composting & More!

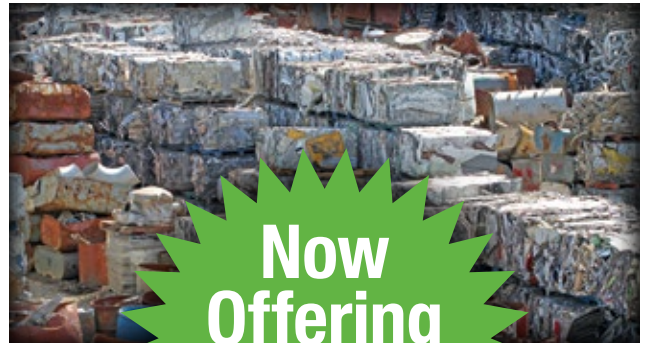
SINGLE STREAM MATERIAL RECYCLING

With the use of our Single Stream Material Recycling Facility, Royal helps to increase waste diversion rates up to 90%.

ROYAL
Waste Services, Inc.

(718) 526-2623

Call today for more information,
or to speak with a Royal Waste
Green Team Sustainable Consultant



**Now
Offering
Metal Recycling
With Rebates**

www.royalwaste.com

EDITOR'S NOTEBOOK

NY SWIMS and the Revitalization of the East Bath House at Jones Beach



Jones Beach State Park is home to over six miles of gorgeous white-sand beach on the Atlantic Ocean and encompasses a marine environment of 2,400 acres along the south shore of Long Island. In 2024, Jones Beach celebrated its 95th anniversary with a record-breaking attendance of 9.5 million visitors, making it one of the most popular recreational spots on the East Coast.

On May 23, 2024, Governor **Kathy Hochul** announced the procurement of \$100 million to invest in the last major piece of the beach's historic infrastructure; a piece that has been untouched by any revitalization that has taken place over the past decade; the iconic Jones Beach East Bathhouse.

In addition to the announcement of the procurement to revitalize the East Bath House, Governor Hochul unveiled **NY SWIMS – the New York Statewide Investment in More Swimming**, the fourth proposal of her 2024 State of the State. Recognizing that drowning is the leading cause of death for children ages 1-4 and that climate change will increase extreme heat events, NY SWIMS will build out municipal pools in high-need areas, connect New Yorkers to the State's rivers and lakes, deploy pools in urban environments, and invest in State parks and pools. It will also promote initiatives to help more New Yorkers swim safely by addressing the statewide lifeguard shortage, increasing swimming instruction, and increasing amenities at pools and beaches.

“As drownings in New York State reach record levels among young children, it's clear that this is a public health issue,” said Gov. Hochul. “NY SWIMS is the largest statewide investment in swimming since the New Deal, and we are creating new ways to provide children and their families a safe space to learn how to swim.”

Through an infusion for the park system's centennial, State Parks will convert the abandoned pool complex at the Jones Beach East

Bath House into a destination spray park, introducing and incorporating a unique ‘Learn to Swim’ feature to help children and inexperienced swimmers stay safe in a smaller, controlled environment.

By the summer of 2026, the 1930 Jones Beach East Bathhouse will be redesigned and reimagined for present and future generations to enjoy. New York State Parks is directing the project, in collaboration with the Office of General Services, and construction is currently in progress.

The East Bathhouse was designed by architect Herbert Magoon in 1929. It was the first major building completed at Jones Beach and an important component of a formal architectural plan at Jones Beach inspired by Beaux Arts and Art Deco styling. Between 1967 and 1970, the building underwent major reconstruction and was drastically altered. The changes resulted in the disuse and closure of sections with spaces that were neglected and deteriorating. In 2009, the East Bathhouse was closed due to budget cuts.

The first segment of restoration included the abatement and demolition of the bygone era patio, pavilions, and picnic area, which is now complete. The next phase involves converting the abandoned pool into a destination pool, which will include a unique ‘Learn-to-Swim’ feature to help youngsters and inexperienced swimmers build their skills and stay safe in a more controlled environment. Additionally, **the new pool complex will be ADA accessible** with a shallow entry zone that gradually slopes into the water, enabling a comfortable entry and exit into and out of the pool. The complex will also contain a separate, deeper area to assist in building swimmer confidence.

While the integrity of the bathhouse will be well-preserved, with all removed historic elements to be reinstalled, the historic main bathhouse will be revitalized with new bathrooms, changing rooms, and a concessions area. Additionally, several sustainability features have been incorporated into the building, including renewable energy sources, adaptive reuse, and water conservation.

NYS Park officials report that the project is on schedule with a planned reopening of the East Bathhouse in the summer of 2026.



JULIA LAURIA-BLUM, *Editor-in-Chief*
jblum@metroairportnews.com

COMPANY SPOTLIGHT

The Nourish Spot

You are what you put into yourself! Empower your wellness journey.



(L.-R.): Scheron Brown, Paulette Forte, and Dawn Kelly.

Founded in 2016 in Jamaica, Queens, The Nourish Spot began as the vision of **Dawn Kelly**, a former corporate communications executive who pivoted into entrepreneurship after decades in the media and nonprofit world. Inspired by her own wellness journey and a desire to bring healthier food options to her neighborhood, Dawn created The Nourish Spot as a wellness bar serving smoothies, fresh-pressed juices, salads, wraps, and açai bowls curated from fresh fruits, vegetables, herbs, nuts, and seeds.

From the beginning, The Nourish Spot has been a family business. Dawn's children – especially her daughter, **Jade Duncan** – have worked side by side with her to build the brand. That mother–daughter partnership has become a defining part of the company's identity, modeling intergenerational entrepreneurship and community leadership.

In 2022, Hudson by AVOLTA's business developer, **Bridget Biagas**, first discovered

The Nourish Spot on Instagram, sparking a relationship built on shared values of innovation, wellness, and community impact. Over the next two years, The Nourish Spot continued to demonstrate its reputation as a trusted, minority- and woman-owned business rooted in Queens, NY. That foundation led to its selection in 2024 as an equity partner with Hudson AVOLTA in JFK Terminals 5, 6, and 8. This partnership not only expanded The Nourish Spot's brand presence onto a global stage but also represents a meaningful step toward diversifying airport dining with fresh, healthy, and culturally rooted food and beverage experiences.

In 2020 and 2021, they served as a Levy Restaurants vendor at Forest Hills Stadium, fueling thousands of music lovers during summer concerts. Dawn Kelly repeatedly asked Levy and others in the hospitality industry the same question: "How do we get to the US Open?"

That persistence paid off. In 2022, the Queens-based wellness bar was invited to join the US Open's food concession program—becoming one of the first Black women-owned businesses from South East Jamaica Queens to operate at the tournament.

Since then, The Nourish Spot has returned year after year, proudly representing Queens with a fresh, healthy, and customizable menu of smoothies, salads, and açai bowls.

What began with curiosity and determination at Forest Hills has grown into a historic presence at one of the world's biggest sporting events.

As the business grew, The Nourish Spot established itself as a hub for health, culture, and entrepreneurship education in Queens. It has employed hundreds of young people through internships, workforce training, and partnerships with local schools, nonprofits, and city agencies.

Today, The Nourish Spot continues to operate from its flagship store in Jamaica, Queens. It has earned recognition from organizations such as the NYC Hospitality Alliance, American Heart Association, Queens Chamber of Commerce, and NYC Mayor's Small Business Advisory Commission, while staying true to its roots as a community-driven, wellness-focused brand. ■



The Nourish Spot
107-05 Guy R Brewer Blvd.
Jamaica NY 11433
Tel: (718) 526-2099
www.thenourishspot.com

THE LAW OFFICES OF MCINTYRE, DONOHUE, ACCARDI, SALMONSON, & RIORDAN, LLP

PROTECTING YOUR RIGHTS. SECURING YOUR FUTURE.



SPECIALIZING IN:

WORKERS' COMPENSATION
SOCIAL SECURITY DISABILITY
3/4'S DISABILITY PENSION

HURT AT WORK?
CALL US TODAY!

866.557.7500

PROTECTING WORKERS THROUGHOUT NY STATE

CALL US TODAY FOR A FREE CONSULTATION!



inquire@licomplaw.com



licomplaw.com

ASAK

**BEHIND EVERY FLIGHT,
SUPPORTING EVERY
TAKEOFF WITH
PRIDE AND PRECISION.**

- GROUND HANDLING
- PASSENGER SERVICES
- GSE MAINTENANCE
- ★ - CARGO & MAIL HANDLING ★
- FUMIGATION SERVICES
- ANCILLARY SERVICES
- SNOW REMOVAL & DE-ICING



**VETERAN OWNED & OPERATED,
LOOKING FOR A FEW GOOD PEOPLE.
AN EQUAL OPPORTUNITY EMPLOYER.**



**FOR FURTHER INFO
WWW.ASAK.AERO**



Plaza Premium Group to Develop and Operate Two Independent Lounges at NTO



The New Terminal One at JFK International Airport has selected award-winning global airport hospitality leader Plaza Premium Group (PPG) to develop and operate two lounges, covering nearly 14,000 square feet, setting a new standard for service and comfort at JFK's premier international gateway.

A key feature of the New Terminal One experience will be PPG's Plaza Premium First lounge, an exclusive ultra-premium lounge designed to set a new benchmark in airport hospitality. This elevated space will feature the brand's signature Infinity Room alongside bespoke services and personalized experiences tailored for the most discerning travelers. Complementing this will be a Plaza Premium Lounge in the pre-security arrivals hall, offering a welcoming space for guests departing out of the New Terminal One or who have just landed from their flight.

The New Terminal One will be home to six unique lounges, including four airline lounges representing all three global airline alliances and the two independent lounges that will be operated by PPG and available to select airline customers, partners as well as walk-in guests.

Located beyond the security checkpoint, the 9,300-square-foot Plaza Premium First

lounge will be open 24/7 year-round. Guests will enjoy à la carte dining, curated menus, and a selection of handcrafted cocktails from a dedicated bar. Amongst its most distinguished spaces is the Infinity Room, reserved for those seeking ultimate exclusivity.

Accessible to every traveler, the lounge provides an elevated experience ideal for those seeking the level of comfort and refinement expected by first and business class passengers. Located pre-security, the 4,200-square-foot Plaza Premium Lounge will provide a rare amenity in the arrivals hall. Conveniently located near the curbside entrance of the New Terminal One, the lounge will offer a calm oasis including premium amenities such as fresh restaurant-quality food, a full bar, showers, and a business center. This lounge offers a welcoming retreat for a variety of travelers—whether arriving guests seeking a refresh or shower before heading into the city, friends and family spending quality time with a departing loved one before check-in, or early arrivals looking for a comfortable place to relax, work, or freshen up before their flight.

In addition to the two lounges, PPG will offer its ALWAYS Meet & Assist service—a premium concierge experience that will

provide a seamless journey from curb to gate. Whether it is assistance with check-in, fast track security, arrival / departure meet and greet or baggage handling, ALWAYS offers a tailored service customized for each customer's needs. All services can be conveniently arranged in advance through PPG's custom digital applications.

PPG was recently named the World's Best Independent Airport Lounge Brand for the ninth consecutive year at the prestigious Skytrax World Airline Awards. As the world's leading independent lounge operator, PPG operates in more than 600 airports across 150 countries, serving over 24 million passengers annually. Its lounges at the New Terminal One signal a bold new chapter in the U.S., establishing a presence for the hospitality provider in one of the world's most iconic airports.

"We are delighted to partner with Plaza Premium Group, a global innovator renowned for reimagining airport hospitality," said **Jennifer Aument**, Chief Executive Officer, The New Terminal One. "Their lounge offerings align perfectly with our mission to create an unparalleled guest experience that is tailor made for international customers flying out of JFK, the nation's largest global gateway."

"We are proud to bring Plaza Premium Group's experience to JFK's New Terminal One, marking an important milestone for our presence in the U.S.," said **Pascal Belanger**, Senior Vice President, Americas, Plaza Premium Group. "With Plaza Premium First, Plaza Premium Lounge, and our ALWAYS Meet & Assist service, we can offer travelers a seamless, elevated experience from curb to gate, while creating spaces that cater to the needs of discerning passengers. This partnership reflects our ongoing commitment to redefining airport hospitality and providing memorable experiences for every traveler who passes through this world-class gateway." ■



The Local Workforce That Keeps Us Flying

Exploring the Potential for Airport Employment

BY JULIA LAURIA-BLUM
jblum@metroairportnews.com

Employment at airports offers a wide range of occupational opportunities. Jobs and careers at airports are as diverse as the multitude of operations that are performed at these complex epicenters for air travel, 365 days a year.

Applicants with the skills needed for an entry-level position at an airport can lead them to a well-paying job, a management or senior position, or a specialized role that requires specific training and licenses. From terminal and ground operations to customer service and all support service

roles, airports function as self-contained urban complexes, or, using a more colorful term, an aerotropolis.

Airports are active, fast-paced, and ever-changing dynamic environments. In acquiring the general skills needed to work in a busy and frequently demanding airport atmosphere, or while gaining the experience or relevant training required for a particular position, it can be most beneficial to develop the skills that will maximize an applicant's qualifications as a strong candidate for the job.

In terms of employment, work at an airport falls into four areas of the airport environment: the landside, the airside, the terminal, and off-airport.

The terms 'landside' and 'airside' refer to distinct areas defined by security checkpoints at the airport.

Landside is the public area accessible to everyone, including areas for check-in, baggage claim, security, and ground transportation. It encompasses passenger terminals, access roads, parking garages, and public transport facilities.

Airside is the secure area beyond security checkpoints, where passengers (with boarding passes) and staff have access to gates, aircraft, and other restricted areas.

Whether working airside or landside, in a terminal, or off-airport, there are different security levels that impact security clearance requirements for many jobs at

the airport, and ones that require higher levels of clearance requirements due to differing levels of access and the integral security risks involved.

Regardless of whether working behind the scenes or in the forefront, cultivating specific skills can bolster a candidate's potential and the outcome of success in the field of their choice. These include customer service skills, communication and interpersonal skills, an ability to work well under pressure, flexibility and adaptability, problem solving and practical decision-making skills, physical strength and stamina for some roles that require lifting, moving, and standing for extended periods of time, and, depending on the role, specific technical skills.

Job and career opportunities at airports include:

■ **Aircraft Maintenance** – Inspect, service, and repair aircraft, components and related equipment. Positions in this area may require specific certifications or licenses, such as an A&P (Airframe and Powerplant) license for maintenance technicians.

■ **Airlines and Airport Concessions** – Airports host many assorted retail shops, restaurants, food and lifestyle concessions. Airlines lease space within the terminal for ticket counters, baggage handling, and other passenger services.

■ **Airport & Terminal Operations** – Airside operations are a key component of airport management, monitoring the most active

areas of aircraft movement and ground handling services. This includes the airfield, ramps, and zones around runways where airport staff work attentively to ensure safe and efficient operations. Landside operations involve a broad spectrum of activities that focus on passenger experience and the management of publicly accessible airport assets. This encompasses everything from the terminals to the concourses, as well as parking operations, ground transportation and shuttles, roadways, and properties surrounding the airport.

■ **Cargo Handling Ops** – Involves the preparation of cargo shipments, the loading and unloading of the aircraft, and the transfer of cargo between storage facilities and land transport.

■ **Construction** – Job opportunities in construction include aviation contractors and electrical engineers, airport ground operations, and ground handling.

■ **Education and Training** – Programs and airport training courses provide comprehensive training solutions to empower airport staff

■ **Finance and Accounting** – jobs in this area involve managing an airport's financial operations, budgeting, cost management, revenue collection from airline fees, concessions, parking, and ensuring compliance with regulations like the FAA Financial Reporting Program. It also includes financial planning for development, debt management, and organizing financial

reports for airlines, governmental entities, and the public

■ **Flight Ops** – involves the coordination of airside activities, such as aircraft movement, fueling, ground handling and passenger services such as boarding and baggage management. Key roles include Air Traffic Control, which manages aircraft movement in the airspace and on the ground; airline flight operations, which handles flight planning, crew scheduling, and in-flight dispatch; and airport operations agents who coordinate ground-based activities, passenger flow, and services for departing flights.

■ **Food Service & Hospitality** – Responsibilities include cashiers, servers, baristas for QSRs (Quick Service Restaurant), line and prep cooks, dishwashers. Food service directors, managers and general managers oversee staff and an establishment's operations. Other roles may include staff for airport lounges or attendants for local airport hotels. Storeroom and utility jobs support food and beverage operations.

■ **Ground Support & Handling** – Jobs in this role include the use of specialized Ground Support Equipment (GSE) and staff that service aircraft between flights, baggage handling and cargo loading, aircraft towing, refueling, passenger boarding, and providing temperature control and power to the aircraft. Line service technicians handle aircraft ground operations like directing planes and managing fuel.

■ **Ground Transportation & Guest/Customer Services** – Involves roles for drivers of passenger and cargo shuttles, baggage handlers, ramp agents, and security patrol drivers. Guest/customer Services involve transporting passengers, luggage, and cargo on the airport grounds or to/from hotels via taxis, buses, and livery services. Common requirements for these positions include passing a background check, drug test, and having a valid driver's license. Some roles require a CDL for bus operation. IT & Tech Services – Most airports have dedicated information technology departments that are responsible for maintaining communication systems, security infrastructure, and operational software. Roles include network administrators, cybersecurity specialists, system analysts, and support technicians. Key skills include

Continued On Page 12

Helpful & Practical Assets to Keep In Mind When Exploring Potential Airport Employment

- **High School Diploma/GED:** This is a common minimum requirement for many entry-level positions.
- **Language Proficiency:** Fluency in English is often crucial, and knowledge of additional languages can be highly beneficial.
- **Security Clearance:** Most airport positions require passing background checks and obtaining security clearances like the Security Identification Display Area (SIDA) Card.
- **Specialized Training and Certifications:** Depending on the role, you might need specific aviation-related degrees, certificates, or licenses
- **Standard non-commercial licenses** (Class D) for everyday vehicles, Commercial Driver's Licenses (CDLs) for operating large or heavy vehicles, and specialized licenses for livery services
- **Technical Knowledge:** Familiarity with computer systems, airport technology, and relevant software can be an asset.

Continued From Page 11

strong problem-solving, communication, and the ability to work under pressure to ensure operational efficiency and safety. Qualifications generally include a relevant degree and experience with airport-specific software.

■ **Janitorial & Facility Services** – Janitorial staff play an essential role in maintaining public health and preventing the spread of microbes in a high-traffic area. Tasks involve keeping airport environments clean, sanitary, and safe by performing tasks such as sweeping, mopping, trash removal, and restroom cleaning. These roles also extend to general maintenance, such as spot cleaning carpets, cleaning glass, and maintaining common areas like terminals and lounges. Key requirements include attention to detail and the ability to work varied shifts.

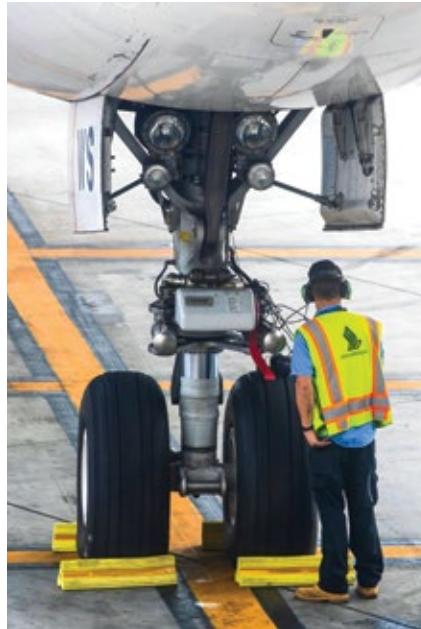
■ **Maintenance** – Airport facility maintenance requires staff with a strong understanding of specialized equipment and safety protocols. Key requirements include proficiency in maintaining various systems such as electrical, plumbing, pavement, and lighting, along with the ability to use hand and heavy machinery for tasks ranging from minor repairs to emergency response, all while ensuring continuous, safe airport operations.

Integrated Airport Facility Support Services are single-source contractors who offer a wide range of services to manage and maintain an airport's operations, from specialized cleaning, to HVAC, technical maintenance, staffing, and passenger services.

■ **Manufacturing** – Whether on-site or near an airport, manufacturing jobs involve the production and assembly of aircraft, aircraft components, and avionics electronics and equipment that require machinists, technicians, and efficiency specialists.

■ **Non-CDL Drivers** – This position does not require a CDL (Commercial Driver's License), as the vehicles used in this role are under the weight limit that mandates a CDL. Non-CDL drivers operate smaller vehicles for jobs that entail the transport of galley equipment to and from the aircraft, the delivery of materials or goods, or that may provide shuttle services to personnel.

■ **Office & Administrative Support** – This role involves a wide range of



responsibilities, such as managing schedules, handling correspondence, processing paperwork, providing customer service, maintaining records, and supporting airport operations and leadership teams. Computer proficiency and strong communication skills are essential.

■ **Passenger Services** – Passenger service at airports is paramount in assuring a pleasant, practical, and positive travel experience and offers a wide scope of assistance to travelers, including check-in, baggage handling, providing information, boarding, and security procedures, wheelchair or other special curb-to-gate assistance for those with disabilities or other needs.

■ **Real Estate** – Airports lease space to airlines, cargo companies, and other businesses. Real estate opportunities involve

Employment Resources:

Airport Worker

www.airportworker.com

Council for Airport Opportunity (CAO)

www.caonynj.com

Port Authority of New York and New Jersey

www.jointheportauthority.com

Long Island MacArthur Airport

www.flymacarthur.com/careers

Republic Airport

www.republicairport.net

management and development of airport properties, including the role of a property manager or a leasing representative who focuses on retail, office and airline spaces.

■ **Sales, Retail, & Customer Support** – Airports offer a broad variety of retail and customer support roles that extend to airline personnel to staff for duty-free shops, restaurants, lounges, and other in-terminal services.

■ **Security** – Airport security personnel ensure the safety and security of passengers, staff, and airport facilities. Employment includes positions with the Transportation Security Administration (TSA) as a Transportation Security Officer, performing screening duties, or with Customs and Border Protection agencies. Other roles include airport security guards hired by private companies to patrol and monitor the airport, and specialized roles such as K9 handlers.

■ **Shipping & Freight** – Cargo Handlers and Warehouse Agents involve the physical handling of cargo. Ramp Agents work on the ramp handling baggage, guiding aircraft, and ensuring fluid operations during takeoffs and landings. Service technicians manage automated cargo systems, and Airline Ramp Turnaround Coordinators direct ground crews, coordinate baggage handling and fueling services, communicate with pilots and air traffic control, and manage the entire process to meet departure schedules.

■ **Trucking & Intermodal** – The job responsibilities of an intermodal truck driver include overseeing the process of loading and unloading shipping containers, operating heavy trucks, and following safety regulations. Jobs in this role are available with various companies, including cargo carriers, freight forwarders, and logistics services. Drivers need a CDL (Commercial Driver's License) and the road skills to operate heavy vehicles safely.

■ **Waste Removal** – The work of waste removal is critical for maintaining airport sanitation, hygiene, safety, and sustainability. Work involves collecting, sorting, and transporting waste generated by passengers, airport operations, and airlines, using specialized systems such as pneumatic tubes, standard practices, and recycling programs. ■



LGA Airport Recruitment Event

Love food and excel in a fast-paced environment?
Join CAO's Food Service Recruitment Event at LGA Airport
and explore exciting career opportunities in airport hospitality!

Call (347) 562-2113 to reserve your spot!

September 30, 2025

LaGuardia Airport, Terminal B, Ground Floor, Near Dunkin'

Looking to Fill Numerous Positions!



**Council for Airport
Opportunity (CAO)**

Tel: (718) 523-7100

www.caonynj.com

All Applicants Must Present:

- Social Security Card (Unlaminated)
- State Driver License, Learner's Permit, or Non-Driver ID
- Working Documents Required
- Will Be Drug Tested (Cannabis Included)



AIRPORT EMPLOYMENT

OXF SYSTEMS ENGINEER

The System Engineer supports both operations and maintenance, the HLC/PLC Technicians perform scheduled maintenance tasks and repairs, respond to emergency calls, and assist in analysis of performance metrics.

Worldwide Flight Services

Job No.: 000317

Ground Handling

Full-time

LaGuardia Airport, NY

DIESEL MECHANIC

Certifies for quality of workmanship, including signing mechanical releases on field work. May be assigned to order, receive, inventory, secure or disburse parts and supplies on or off airport facilities.

Worldwide Flight Services

Job No.: 000316

Ground Handling

Full-time

JFK Airport, NY

RAMP AGENT

As a Ramp Agent, you will be responsible for essential ramp service tasks, including loading and unloading baggage and cargo, marshalling aircraft, and performing water servicing. A focus on safety and attention to detail is crucial. This position is covered by a collective bargaining agreement.

Worldwide Flight Services

Job No.: 000313

Cargo Handling

Full-time

JFK Airport, NY

FACILITY TRAINER

Responsible for providing training for new hires and tenured employees through various learning methods.

Worldwide Flight Services

Job No.: 000312

Education & Training

Full-time

JFK Airport, NY

GENERAL MANAGER (EWR)

The OTG General Manager at EWR is the management leader in our OTG units; this position is responsible for all day-to-day restaurant and Cibo operations for multiple concepts and crewmember performance.

CIBO

Job No.: 000311

Food Service & Hospitality

Full-time

EWR Airport, NJ

HOST (JFK)

The OTG Host must possess strong interpersonal skills, a sunny disposition, and a positive outlook all the while adhering to the OTG Core Steps of Service.

OTG Management

Job No.: 000310

Food Service & Hospitality

Full-time

JFK Airport, NY

COOK II (JFK)

The Cook II at JFK Airport is responsible for delivering the OTG guest experience. The ability to prepare food to the correct temperature, portion, and plating specifications while maintaining a clean and sanitized area, is critical to success in this role.

OTG Management

Job No.: 000309

Food Service & Hospitality

Full-time

JFK Airport, NY

COOK III (JFK)

The Cook III at JFK airport is responsible for delivering the OTG guest experience. The ability to prepare food to the correct temperature, portion, and plating specifications while maintaining a clean and sanitized area, is critical to success in this role.

OTG

Job No.: 000308

Food Service & Hospitality

Full-time

JFK Airport, NY

STARBUCKS BARISTA (LGA)

Baristas at LGA Airport are responsible for delivering the OTG Starbucks experience to all guests and fellow crew members.

OTG

Job No.: 000307

Food Service & Hospitality

Full-time

LaGuardia Airport, NY

LINE TECHNICIAN

In this vital role, you will handle a wide variety of duties that make every day different, including inspections, preventive maintenance, troubleshooting, parts replacement and repair, as well as routine maintenance.

United Airlines

Job No.: 000304

Aircraft Maintenance

Full-time

EWR Airport, NJ

ANALYST - CARGO LOGISTICS OPERATIONS

The Analyst – Cargo Logistics Operations is a key member of Cargo Logistics Team that is responsible for \$65+ Million of Road Feed Service (RFS) spend and the management of over 20,000 Unit Load Device (ULD) assets.

United Airlines

Job No.: 000303

Cargo Handling

Full-time

EWR Airport, NJ

JFK PASSENGER SERVICE LEAD - ANA

A customer service lead provides customers with information about products and services. It is also their duty to deal with enquiries from customers.

Unifi

Job No.: 000301

Passenger Services

Part-time

JFK Airport, NY

AIRPORT EMPLOYMENT

SR. MAINTENANCE MANAGER

The Senior Maintenance Manager is a senior level maintenance manager servicing all branch equipment and facilities for one or more locations with substantially high sales volume and complex operations.

HMS Host
Job No.: 000283
Food Service & Hospitality
Full-time
JFK Airport, NY

AVIATION OPERATIONS CENTER COORDINATOR

We are in search of an ambitious and proactive coordinator that will provide support to our Airport Operations with handling personnel sick calls, operational coverage, and daily coverage reporting.

Global Elite Group
Job No.: 000299
Security
Full-time
Garden City, NY 11530

OPERATIONS PERFORMANCE CONTROLLER

The Operations Performance Controller uses financial and operational analysis to observe, collect, understand, communicate, and report company operational data as measured against key performance indicators.

HMS Host
Job No.: 000284
Finance & Accounting
Full-time
Jamaic, NY 11430

CREW MEMBER AT TERMINAL 8

The Crew Member is responsible for performing a variety of duties within a fast food establishment which may include cleaning the food or stock areas,

operating fryers & microwaves, manning food preparation production line, assisting in the kitchen area.

Eataly Wine Bar at Terminal 8
Job No.: 000288
Food Service & Hospitality
Full-time
JFK Airport, NY

GROUND MAINTENANCE MECHANIC (STATIONARY)

The GMM (Stationary) is responsible for the maintenance of stabilized stationary machinery and equipment.

Delta Air Lines
Job No.: 000298
Ground Handling
Full-time
LaGuardia Airport, NY

AIRCRAFT MAINTENANCE TECHNICIAN

The Aircraft Maintenance Technician (AMT) is a critical TechOps role at Delta. In this role, you will maintain the proper and safe functioning of Delta's fleet.

Delta Air Lines
Job No.: 000297
Aircraft Maintenance
Full-time
JFK Airport, NY

AIR LOGISTICS MANAGER ON DUTY

Proactively monitors the work of assigned employees to ensure that customer satisfaction, safety, security, quality and employee relations meet or exceed standards.

Worldwide Flight Services
Job No.: 000314
Cargo Handling
Full-time
JFK Airport, NY

GROUND MAINTENANCE MECHANIC (MOTORIZED)

As a Ground Maintenance Mechanic (GMM) in a motorized role, you will be a part of Delta's Ground Support Equipment team.

Delta Air Lines
Job No.: 000296
Ground Handling
Full-time
JFK Airport, NY

SHIPPING & RECEIVING CLERK

This position verifies and keeps records on incoming and outgoing shipments and prepares items for shipment.

SBM Management Services
Job No.: 000295
Warehouse
Full-time
Jamaica, NY 11430

ENVIRONMENTAL HEALTH & SAFETY MANAGER

The EHS Manager will be responsible for planning, directing, and implementing organization safety program to ensure safe, healthy, and accident-free work environment.

SBM Management Services
Job No.: 000293
Janitorial & Facility Services
Full-time
Jamaica, NY 11430

SHIFT MANAGER I

The MGRI ensures the restaurant is clean, ready for business, staffed, and operates to high operational standards.

Brooklyn Tea & Market at T4
Job No.: 000289
Food Service & Hospitality
Full-time
JFK Airport, NY

Visit our website to apply for these featured airport employment opportunities and search for additional jobs at the New York area airports. Register today to allow airport and aviation employers to match your skills with available positions.

www.airportworker.com



AIRPORT INTEL

Queens Students Take to the Sky from York College Classrooms

More than 100 students from Queens spent their summer learning how to fly planes on flight simulators and navigating drones, hoping to secure a stipend for their education and college credits.



Students in the JFK Aviation and Aeronautics Academy at York College train on the college's flight simulators.



Instructor Omar Anderson, a certified flight instructor, working with students.

As the Port Authority transforms John F. Kennedy International Airport (JFK) into a world class gateway to serve the next generation of air travel, 125 students from the surrounding Queens communities spent the summer preparing for careers in the aviation industry.

For the second consecutive year, the JFK Redevelopment Aviation and Aeronautics Academy at York College held a six-week-long summer session for students in grades six through 12 who aspire to careers in an industry that previously seemed out of reach.

The academy is a collaboration between the Port Authority and York College, with the support of the JFK Redevelopment terminal developers – New Terminal One, Delta Air Lines, JFKIAT, JFK Millennium Partners and American Airlines. The aim of the program is to provide opportunities for local youth in science, technology, engineering, and math fields related to aviation, aeronautics, and airport management, as well as to introduce them to leadership and career opportunities in the aviation industry.

“Many of our students are the first generation of their family who are on track to go to college,” said **Dr. Nazrul Khandaker**, a professor at York College, who helped to design the Aviation and Aerospace Academy. “This is an opportunity to show them that there are career opportunities in aviation they may not have known were available to them.”

In addition to summer classes, the academy also offers Saturday sessions that each enroll up to 350 students in grades one through 12 during the fall and spring semesters. Altogether – fall, spring and summer – roughly 1,500 students from Queens have gone through the academy in its first two years. During the 5-day-a-week summer session, high school students receive a \$1,200 stipend and are eligible to earn college credits.

The aviation STEM program is one of several initiatives identified by the JFK Redevelopment Community Advisory Council, chaired by Rep. Gregory Meeks and Queens Borough President Donovan Richards Jr. Launched by the Port Authority in 2018, the council serves to ensure that the communities near JFK share in the benefits, not just the burdens, of hosting an airport that is undergoing a \$19 billion redevelopment program.

“As we redevelop JFK into a world-class airport, we are equally committed to investing in the young people who will one day lead this industry,” said **Rachelle Antoine**, manager of external affairs and community outreach of the Port Authority’s redevelopment of JFK. “The aviation academy is more than a program – it’s a pathway for Queens students to see themselves in aviation, to gain hands-on experience, and to build the confidence that their dreams are within reach.”

Fahon Tavir, a research mentor for the academy's summer session, knows how impactful the academy can be. He said that his passion for aviation and physics goes back to an earlier STEM program that York College hosted in partnership with NASA. "I didn't know anything about aviation when I came here in 2021 as a high school senior," said Tavir, who graduated from Columbia University this year with a degree in applied physics, an achievement that he credits in part to the York STEM program he attended while in high school. "It definitely helped me get into college."

On a recent weekday, the 2nd floor corridor at the York College Academic Core Building was filled with the sound of drones buzzing through an obstacle course set up outside aviation instructor **Omar Anderson's** classroom. Anderson, a certified drone instructor, challenged his students to fly the drones through the obstacle course as a means to develop their skills in what is a new and rapidly growing sector of the aviation industry.

Afsa Fatema, another student operating a drone, said she chose the academy

Dr. Billy Metallinos, a professor at York, leading a class on the basics of flight.



because she has an interest in "anything that flies in the sky."

In a classroom near the drone obstacle course, **Dr. Billy Metallinos** was mimicking the movements of a plane with a model airplane as he asked his sixth- and seventh-grade students to describe the plane's movements using the same terminology pilots use. In the rear of the classroom, students were busy getting a feel for what it's like to pilot a plane on one of the college's two flight simulators.

Nicholas Lame, a student in Dr. Metallinos' class, said the program opened his eyes to the possibility of a future in aviation. "I wasn't considering it before. But aviation is really interesting," he said.

Nicholas said he'll get to put his newfound knowledge to use once the academy is over and he travels with his family on vacation. "I'm flying with my family to Antigua. Now, while I'm in the passenger cabin as the airplane changes position, I'll know exactly what the pilot is doing in the cockpit." ■



Turn Waiting Time into Engaging Moments Enhance Customer Experience with Premium Print and Digital Content

Make waiting enjoyable with fast and convenient access to over 1,600 national and international newspapers and magazines in 40 languages, available on any device. No subscriptions or apps needed – just seamless integration with your IT infrastructure in your respective corporate design. Elevate your customer service effortlessly.

Contact us to learn more.

Gabrielle Sarmiento
The Traveling Press, LLC
Queens, NY 11355
Phone: 718-353-5416
Email: gabrielle.s@thetravelingpress.com
www.thetravelingpress.com
www.media-carrier.com



AIRPORT INTEL

ACE Turns Passion Into a Global Niche: Air Freight for Specialty Vehicles

At John F. Kennedy International Airport, Alliance Cargo Express, Inc. (ACE) has taken a road less traveled in the freight forwarding industry. What began as a team of car enthusiasts wanting to bring excitement into the world of logistics has evolved into one of the company's fastest-growing services: exporting special vehicles by air.

"For 90% of people, a car is simply a way to get from point A to point B," said **Roman Mizerota**, Director of Logistics and Co-owner of Alliance Cargo Express, Inc. "But for the other 10%, it's so much more. It's a companion, a lifelong friend, and in many cases, a symbol of achievement. We built our service for that 10%."

The company's approach goes far beyond paperwork and pallets. Every shipment is crafted into an experience, with professional media production—exclusive photos, videos, and behind-the-scenes material—designed to become part of the customer's personal collection.

"What started as a passion project for our team quickly became a movement," Mizerota explained. "We wanted to make sure that moving a car by air freight wasn't just a transaction—it was a story, a memory, and an adventure in itself."

The results speak for themselves. In just a few years, Alliance Cargo Express has reached a point where, at times, it exports



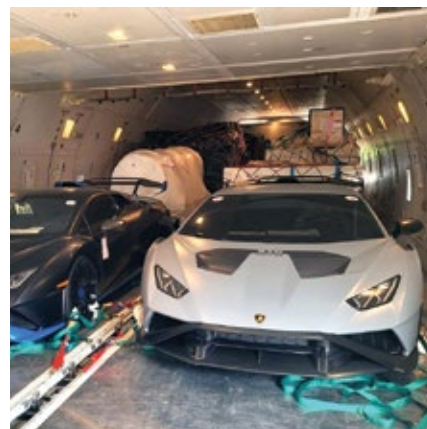
more cars from JFK than all other freight forwarders in the area combined.

Today, the company is trusted by:

- Classic car collectors preserving history across borders
- High-profile individuals shipping their supercars and hypercars (often under strict NDAs)
- International race teams on tight competition schedules
- Exclusive buyers who can't wait for ocean freight to deliver their dream vehicle

"Our mission was simple: make logistics feel personal," Mizerota added. "Every car we ship tells a story—and we make sure it's told the right way."

Alliance Cargo Express, Inc. is a licensed Indirect Air Carrier (IAC) and IATA-certified freight forwarder headquartered at JFK Airport in New York. While the company specializes in global air freight exports, it has built a unique reputation in the niche market of special vehicle shipping, serving collectors, race teams, and discerning clients worldwide. ■



Avianca Unveils New Uniforms Blending Comfort and Brand Identity

The old uniforms will be repurposed through comprehensive projects that allow materials to be recycled and help minimize their environmental impact.

Avianca has officially unveiled its new uniforms, a collection that blends elegance, comfort and pride in belonging to the world's second-oldest airline.

The process began with feedback from Avianca's operations teams, which became the main inspiration for the design. Fashion designer **Juanjo Oliva**, who has 25 years of experience, led the project with Avianca flight attendant **Robert Duke**, winner of the airline's internal "Design Lab" contest. Together they created a collection that reflects the airline's identity and modern image.

The new uniforms will be introduced in December and worn by more than 10,000 employees across operations, customer service and cargo. The update marks a new chapter for the airline, which last refreshed its uniforms in 2018. Old uniforms will be repurposed through projects designed to recycle materials and minimize their environmental impact. ■



PROUD SUPPORTER OF THE
Tunnel to Towers Foundation
T2T.ORG

ALL PROCEEDS WILL BE DONATED
TO TUNNEL TO TOWERS FOUNDATION

BATTLE OF THE PORT

PAPD F.C.
ESTABLISHED 2020
NEW YORK NEW JERSEY
37

VS

JFK
CUSTOMS F.C.

PAPD F.C.

FREE
ADMISSION

GARFIELD HIGH SCHOOL
500 PALISADE
AVE, GARFIELD, NJ 07026

OCTOBER
4TH

DONATIONS WELCOME
AT THE GAME

OPENING CEREMONY
5:00 PM GAME STARTS 6 PM

Korean Air Partners With Swissport On Air Cargo at New York JFK



Korean Air is partnering with Swissport to operate its air cargo's long-standing freight facility, Cargo Building 9, at John F. Kennedy International Airport (JFK). The five-year cargo handling contract came into effect on September 1, 2025 and accords Swissport full management and sublease responsibilities for the terminal. Well established at JFK since 1969, Swissport plans a significant investment in eco-tech infrastructure and digital innovation to ensure maximum operational excellence.

Swissport will now operate, sublease, and extensively modernize Korean Air Cargo's 232,500 square-foot freight facility inclusive of offices. Investments in automation and infrastructure upgrades including an ETV system overhaul and new temperature-controlled storage for specialized cargo, will see the site's annual throughput capacity increase from 200,000 to 295,500 tons. Dedicated Korean Air Cargo operations will begin with a team of around 80 staff, eventually growing to 390+ employees once Cargo Building 9 reaches full capacity.

Swissport's advanced logistic process will bring world-class service to Korean Air

Cargo's customers. "We are delighted to partner with Korean Air Cargo on this historic contract, marking our first large-scale collaboration at a single location. We are aligned in our mission to provide operational excellence to Korean Air Cargo's customers. Swissport is strongly committed to raising and further fine-tuning the standard of cargo handling at New York JFK airport and is therefore investing significantly in establishing high-tech quality automation, transparent systems and enhanced safety measures, while also pursuing IATA CEIV and GDP certifications. It is this perfect blend of automation and our professional team's track-record expertise that ensures efficient, high-quality operations and the best customer service," said **Nelson Camacho**, CEO of Swissport North America and Canada.

"Swissport has demonstrated that it shares our values of professionalism, excellence and sustainability, and our vision for the future of our JFK hub," **Jaedong Eum**, Executive Vice President and Head of the Cargo Business Division at Korean Air, stated. "Air Cargo ground quality comes along with operational excellence beyond

efficiency. And continuous investment in state-of-the-art equipment and training is crucial for successful and sustainable operations. Together with Swissport, we will establish a blueprint at JFK for a highly successful Cargo Path Forward over the coming years."

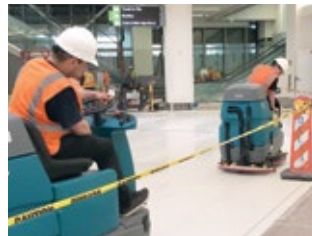
Sustainability plays a large part in Swissport's modernization plans. We are significantly investing in new electric GSE and working closely with the Port Authority to ensure Korean Air's Cargo Building 9 is equipped with a strong and reliable charging infrastructure.

Swissport will be the first handler at JFK to operate an all-electric fleet for all freighter operations from warehouse to ramp. Korean Air Cargo customers will also benefit from Bionatur biodegradable products which Swissport is introducing across the NOAM region, to significantly reduce plastic waste in day-to-day cargo operations, including packaging and handling.

Preparing for a Sustainable Future

"Our operational strategy mirrors Korean Air Cargo's core values and is grounded in three key pillars: Safety, Consistent Service Quality, and Full Transparency," **Ajay Barolia**, Executive Vice President Cargo Swissport North America, explained. "To support these objectives, we are introducing a range of forward-thinking initiatives such as sustainable, energy-efficient Ground Support Equipment (GSE), advanced automation and autonomous technologies and high-density VNA racking systems that maximize storage space and improve operational speed.

These investments will future-proof Cargo Building 9 and ensure it is ready to meet both current demand and future growth reinforcing Swissport's commitment to safe, reliable, and modern cargo handling." ■



Clean. Safe. Compliant.

Full-service cleaning and maintenance programs for airport and aviation facilities.

SIDA Badged with U.S. Customs Seals and PONYA plated vehicles at both JFK & LGA airports.

- PANYNJ Janitorial Maintenance Small Business Enterprise Certified (JMSBE)
- Pre, post, & during-construction cleaning
- Airport lounge detailing and fine cleaning
- Building and office cleaning
- Steam cleaning for all surfaces
- Carpet cleaning & restoration
- Interior and exterior window cleaning
- Building facade cleaning
- Stainless steel cleaning
- Pressure and power washing
- Interior and exterior painting
- General maintenance services
- SIDA badged AOA Janitorial Services for Airport Terminals, Offices, Warehouse, and Hangars
- Ramp, roadway, and warehouse mechanical sweeping
- Foreign Object Debris (FOD) Programs
- Best Management Practices (BMP) implementation and management
- Airport marking painting and removal
- Emergency Spill response
- Bird-dropping cleaning, Bird control installations, including netting and spikes
- Bird strike clean-up
- Catch basin cleaning
- Emergency aircraft cleaning and decontamination
- Heavy-duty equipment and vehicle pressure washing



Aqueous Solutions is a Certified MWBE Woman-Owned Business Enterprise with the Port Authority of New York & New Jersey, State of New York, and New York City

24/7 Emergency Response Hotline: 1-800-294-4950



Located at John F. Kennedy International Airport
 1-800-294-4950 • (718) 355-9080
 info@aqsolution.com • www.aqsolution.com

European Airliners of a Century Ago

Flying was more of an adventure than a means of transportation.

BY ROBERT G. WALDVOGEL
robertw@metroairportnews.com

Today's airline passengers search the internet for the lowest possible fare, pay for their ticket with a credit card, have an electronic boarding pass sent to their cellphones, and ultimately board the aircraft after a gate agent scans their QR code. Depending upon the route, they settle into their seats, have access to the latest inflight entertainment, and may be wined and dined, depending, of course, upon their chosen class.

Aircraft a century ago seated relatively few and were initially unpressurized. Long-range international and intercontinental journeys were measured in days, not hours, and entailed multiple city and country stops. They required nighttime accommodation in either cabin-converted sleeping berths or in hotels, and were sometimes multiple-mode in nature, involving both surface and air means.

A review of some of these long-forgotten types operated by European carriers sheds light on the flying experience some 100 years ago.

Fokker F.XII

As an early high-wing, wooden, trimotor, the Fokker F.XII, produced in Holland, ushered in the 1930s-decade. It represented a streamlined monoplane and



Fokker F.XII

enabled KLM Royal Dutch Airlines to establish both its European and intercontinental route systems with it, carrying between 10 and 18 passengers.

Receiving an eight-strong launch order from the carrier, it first flew on December 5, 1930, but operated its first passenger flight three months later, on March 5, with its president, Albert Plesman, on board, spanning the continents from Europe to Asia.

It advertised the adventurous nature of its Dutch East Indies route to Java, as follows.

“Fly by KLM – the world’s oldest air travel company, on the world’s longest air route – 9,000 miles in ten days,” it enticed. “The voyage of your dreams by ‘Flying Dutchmen,’ the latest American-engine Fokker monoplane to Holland, the Acropolis, the Pyramids, the Holy Land, Baghdad, Mysterious India, the Ganges from aloft, the Golden Domes of Rangoon, Java, and Bali. A complete world panorama in ten glorious, pleasure-packed days.”

Armstrong Whitworth AW.15 Atalanta

The Armstrong Whitworth Atalanta, built across the channel in England, represented an evolutionary step in aeronautical design with its low-drag, streamlined configuration, high wing, and four engines.

“Extremely careful streamlining is the main feature that impresses one when first confronted by the Atalanta,” according to the Armstrong-Whitworth AW.15 Atalanta (British): A Commercial Multi-Place Cantilever Monoplane description (*National Advisory Committee for Aeronautics, Aircraft Circular No. 167, Wash., August 1932, p. 1*).

Powered by four 340-hp Armstrong Siddeley Serval III radial engines, it



Armstrong Whitworth AW.15 Atalanta

accommodated nine, three-abreast passengers in reclining, head- and shoulder-supporting seats, and featured both a galley and a lavatory on African routes, as operated by Imperial Airways, predecessor of both British Overseas Airways Corporation (BOAC), and today’s British Airways.

A multiple-mode, ten-day, 7,963-mile routing from England to South Africa and entailing two rail journeys and seven nights in hotels, left Croydon Aerodrome and passed through Paris and Brindisi, Italy, but by rail, and then continued by air to Athens, Alexandria, Cairo, Assiut, Aswan, Wadi Haifa, Khartoum, Kosti, Malakal, Juba, Entebbe, Kisumu, Nairobi, Moshi, Dodoma, Mbeya, Mpika, Broken Hill, Salisbury, Bulawayo, Pietersburg, Johannesburg, Kimberley, Victoria West, and Cape Town, according to its April 10, 1934 timetable.

“On all Empire services operated by Imperial Airways, meals taken on board the airliner, as well as hotel accommodation and tips, are included in the fare,” it noted.

Dewoitine D.338

France designed its own early airliners, one of which was the Dewoitine D.338.

Powered by three nine-cylinder, air-cooled, 650-hp Hispano-Suiza engines, which turned constant-speed propellers, it featured a 72.7-foot overall length, a

Continued On Page 25



OPENINGS AVAILABLE FOR

Duty Manager and Supervisor
Office Agents • Warehouse Agents • Tractor Trailer Drivers

REQUIREMENTS & QUALIFICATIONS

Must be at least 18 years old • Must be able to lift 70 lbs. on a regular basis (Warehouse)
Valid driver's license with excellent driving record

Must Pass 10 year background check • Must have authorization to work in the U.S.

Starting Salary \$19.00+ per hour for Warehouse and Office Agents

EMAIL RESUME TO:

CPILARINOS@AGI.AERO

For immediate consideration, please stop by our JFK Facility
Delta Cargo Building 21A Room 202 between the hours of 10:00am & 1:00pm

Please bring your resume and ALL government I.D's.

Alliance Ground International provides airline cargo handling services to 55 airlines at thirteen airports: Atlanta, Chicago, Fort Lauderdale, Kansas City, LaGuardia, Las Vegas, Los Angeles, Miami, Newark, New York JFK, Orlando, Salt Lake City and San Francisco. Warehouse and ramp operations schedules are constantly adjusted to flight operations. With partners such as Cargo Force and The Cargo Security Company; Alliance Ground International can be your "one-stop-source" for all of your cargo handling needs. The culmination of years of experience with its industry partners, Alliance Ground International offers a vast range of services: Cargo Handling, Ground Handling, Mail Handling, Passenger, and Security.

WWW.AGI.AERO



YOUR JFK TRANSPORTATION PROVIDER

PROVIDING SAFE & RELIABLE
TRANSPORTATION

— SINCE 1995 —



OUR SERVICES

- Airports
- Charter/Groups
- Shuttles
- Flight Crew Shuttles
- Sporting Events
- Distressed Passengers



NANCY VARGAS
Chief Executive Officer
nancy@dh2limo.com



MIKE VARGAS
Chief Operating Officer & Founder
mike@dh2limo.com

79 North Boundary Road, Building 79 JFK, Suite 205, Jamaica, NY 11430

(718) 928 9966 www.DH2Limo.com DH2Limo DH2Transportation DH2Transportation

Continued From Page 22

96.4-foot wingspan, and a corresponding 1,066-square-foot wing area.

Air France emphasized the aircraft's comfort by stating that it offered twelve reclining armchairs, a bridge table between facing seat pairs, and a cabin bar.

It operated the type on numerous routes, such as the one to West Africa, which required an aircraft interchange.



Dewoitine D.338

“Air France service to the West African Coast is operated in conjunction with the Aeromaritime Company,” according to its 1938-1939 Winter Timetable. “The service, which leaves London on Saturdays, reaches Dakar in Senegal on Sunday night by the first section of the Air France line to South America. The main part of this journey is flown in large Dewoitine 338 three-engine liners, cruising at 185 mph.

Air France also described the exotic nature of its intercontinental routes, particularly the far-flung, 9,209-mile, London-Hong Kong journey that required 22 en route stops to complete.

“Each week, in both directions, Air France airliners connect France to Indo-China and China, by way of the Mediterranean and India,” it stated in its Far East Timetable (March 30, 1938). “From Marseilles to Tripoli in Syria, by way of Athens; from Damascus to Baghdad; from Jodhpur to Bangkok and beyond; as far as Saigon, Hanoi, and Canton, the history of western and eastern civilization is spread beneath Air France wings, and brought to memory by names which revive classic recollections, “Tales of Arabian Nights, and the mysteries of secret Asia and the Asiatic Temples. Phocaeon Marseilles, Naples, and its famous boy, in which is reflected Vesuvius, Corfu with its carpets of flowers and dusky maidens evoking carriers of amphora. The Ionian Sea is scattered with islands of bewitching names, Leucade, Cephalonia, and Ulysses’ Ithaca. Further,

between Patras and Corinth, Lepanto, where Ottoman galleys were defeated. Athens. Above the Cyclades, the flying boat scuds along towards Rhodes and Castelrossa.

“And then on the threshold of a legendary world, is Tripoli in Asia; Damascus with its gardens; Baghdad, capital of Haroun-al-Raschid, the cruel, but literate caliph, friend of Charlemagne. From the coast of Iran, a fantastic view of the desert, the cliffs, and the sandstone citadels. At Karachi, the Arabian Sea is followed by yet another ocean, one with coagulated waves, the Sindh desert, a scorching land of mirages and thirst. At Jodhpur, another civilization—that of India, and then onwards to Allahabad, Calcutta, and Akyab. Finally, he arrived at Rangoon, Siam, with its cool pagodas and French Indo-China with artistic treasures hidden away in the shaded forests.”

Bloch MB.220

Another French airliner was the Bloch MB.220, a low-wing, all-metal, cantilever monoplane that could be considered the equivalent of the Boeing 247 and the Douglas DC-2 built in the US. Its cabin, subdivided into six- and ten-passenger sections in



Bloch MB.220

a two-abreast configuration with a central aisle, sported tray table-provisioned Pullman seats. A bar and a lavatory were respectively installed on the aft left and right sides.

“The steward serves light refreshments from a well-stocked bar, where most drinks from champagne to iced draught Lager may be obtained,” it described its service. “On some routes, a full-course luncheon is served (on linen and china).” One of them, between Paris-Le Bourget and London’s Croydon Aerodrome, departed in the afternoon, but required a surcharge. “Luncheon, price 25 francs, is served on the 13:30 service from Le Bourget,” it noted. “Please order in advance.”



De Havilland DH.91 Albatross

De Havilland DH.91 Albatross

Once again across the channel, England produced the de Havilland DH.91 Albatross, often considered the most elegant design.

“Aerodynamic refinement was the driving consideration in the design of this elegant aircraft, and the result was a fantastically clean fuselage,” according to BAE Systems, the company that de Havilland ultimately became. “This was enhanced further by featuring a retractable undercarriage and an engine installation with minimal frontal area.”

Standard crew consisted of the two pilots, a radio operator, and a flight attendant, and up to 22 passengers could be accommodated in the cabin.

Imperial Airways, which placed the launch order for five Albatrosses, took delivery of the first in October 1938 and inaugurated it into service two months later on the 52-minute London (Croydon Aerodrome) – Paris and 48-minute London-Brussels sectors.

Armstrong Whitworth AW.27 Ensign

The Armstrong Whitworth AW.27 Ensign, Britain’s largest interwar transport landplane, represented the manufacturer’s aeronautical bridge between the bi- and monoplane configuration and was designed to fulfill Imperial Airways’ requirements for a continental-European and long-range Empire route airliner.



Armstrong Whitworth AW.27 Ensign

Continued On Page 26

Continued From Page 25

One configuration, with winged seats and curtained porthole windows through which views were completely wing-unobstructed, featured a forward, 12-passenger smoking cabin; an aft, equally 12-seat, but nonsmoking one; and a final four-passenger one, all in a three-abreast, one-two, arrangement. The single seats were convertible into sleeping berths on the Empire routes.

Journey times included coach transportation to the airport of departure and from the airport of arrival, as well as the actual flight. In the case of the London-Paris sector, passengers departed the Airways Terminal in Britain, took off from Croydon Aerodrome, landed at Le Bourget after a one-hour, 20-minute flight, and completed the surface portion to the Paris Airway Terminal in France.

Breguet Deux Ponts

Despite Boeing's progressive 747 upper deck stretches and McDonnell-Douglas's proposed, but never-built, dual-deck MD-12, Airbus finally fulfilled that

long-envisioned goal when it first rolled out the A380 from the factory in Toulouse, France, on January 18, 2005. Ironically, and most likely little-known, is the fact that a full double-decker airliner was designed in the same country more than three-quarters of a century before it, and at a time when technology had hardly reached a level of maturity.

The aircraft was often referred to as the "Breguet Deux Ponts," which was not its official name, but an acknowledgment of its "double-decker" design.

"The idea behind the design of the 'Deux Ponts' was to offer operators a freighter to carry the largest payload as far as possible at the lowest cost," according to Jean-Christophe Carbonel in his article, *Aeroplane Database: Breguet 'Deux Ponts'* (Key. Aero, June 12, 2023).

One hundred seven passengers could be accommodated in a five-abreast upper and a four-abreast lower arrangement. As a combi, it carried 59 passengers and 22,000 pounds of cargo, and as a pure-freighter, it accepted a 33,000-pound payload, which could consist of outside shipments,



Breguet Deux Ponts

vehicles, tanks, and even helicopters, all of which were loadable through four wide, laterally-opening, rear doors.

Air France operated the type on its Provence routes from Paris-Orly to Marseilles, France; Ajaccio, Corsica; and Algiers, Algeria. ■



ROBERT G. WALDVOGEL spent thirty years working at JFK International and LaGuardia airports with the likes of Capitol Air, Midway Airlines, Triangle Aviation

Services, Royal Jordanian Airlines, Austrian Airlines, and Lufthansa in Ground Operations and Management. He has created and taught aviation programs on both the airline and university level and is an aviation author.



Airside Jobs



Landside Jobs



Terminal Jobs



Off-Airport Jobs

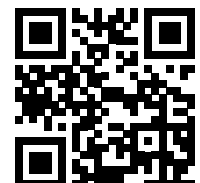


Helping job seekers find airport and aviation-related jobs that match their skills while assisting hiring managers and recruiters to locate suitable candidates.

www.AirportWorker.com

Are You Looking for a New Job?

Airport Employers Are Looking for You Too!
Register Today and Get Found.





MILES Petroleum Co. Inc.

We Keep Things Moving!

AVIATION / FLEET / INDUSTRIAL LUBRICANTS

**Free Delivery • Competitive Prices
Free Oil Analysis On Fuel Tanks & Lubricants**



ANGELA STERN
astern.mileswbe@gmail.com
Tel: (631) 767-8448

ED SULLIVAN
esullivan.mileswbe@gmail.com
Tel: (631) 767-8449

WE ENSURE YOUR CONTRACTURAL COMPLIANCE NEEDS*

Minority & Women Owned Certifications:

WBENC • ACDBE & DBE • Port Authority of NY & NJ • New York State • Nassau & Suffolk Counties



Empire State
Development



THE PORT AUTHORITY OF NY & NJ

* At the Port Authority of NY & NJ, we believe that our operations should reflect the diversity of our community. Because of this diversity, we have enacted a goal to award 20 percent of contracts to Minority-owned businesses, and 10 percent of contracts to women-owned businesses. We encourage each of our partners to also adopt these goals.

**20% participation goal with certified Minority-owned business enterprises (MBE)
10% participation goal with certified Woman-owned business enterprises (WBE)**

www.MilesOil.com

NON-REV TRAVELER

Two Day Trip to Kraków, Poland



BY JONATHAN KATZ
jkatz@metroairportnews.com

Many people have shared with me their incredible experiences traveling to Kraków, Poland, the country's original capital, a beautiful city that remained unscathed during World War II. Krakow is a large city, but not too large to easily walk around the downtown, the Vistula River Area, and the many ethnic sections of the city. Krakow has a rich, colorful history, and the people were very accommodating, with all speaking excellent English.

While tourists come to visit the city, Krakow's two main visitor attractions are the Auschwitz-Birkenau Concentration Camps and the famous Wieliczka Salt Mines. The tour of the concentration camps is somber and may not be for everyone, but it is informational, thought-provoking, and extremely worthwhile.



The first day of the trip was spent visiting the central area of Krakow, including the Wawel Castle, Cloth Hall, Saint Adalbert's Church, and Nowa Huta Square.

The second day of the trip was a 10-hour tour of the Auschwitz-Birkenau Concentration Camps and Wieliczka Salt Mines. No matter how much you thought you knew about these concentration camps, the tour, the guides, and the actual walk through the buildings, crematoriums, and the railroad tracks will generate strong feelings about what happened here and that it should never be forgotten; it is a sobering example of man's inhumanity to man.

The tour of the concentration camps will educate visitors on the concepts of how the camps were built, how and why the much larger second camp replaced the first camp, about the replacement of the 5-mile walk from the first camp to the work zone for the German war machine, and about the intricate process that was applied to identifying every inhabitant of each camp.

The Wieliczka Salt Mines feature not only information on salt mining, which was discontinued in 1996, but passageways, chapels, statues carved out of rock salt, and an underground lake. The Wieliczka Salt Mines are an unforgettable sight to behold.

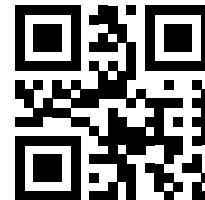
On this trip, my wife, Maureen, and I flew Delta Airlines into Brussels Airport (BRU), and then Brussels Airlines to Kraków John Paul II International Airport (KRK). On the return trip home, we flew Lufthansa German Airlines into Frankfurt Airport (FRA) and then Frankfurt back to John F. Kennedy International Airport (JFK). Since Poland is not part of the euro (EUR) zone, we found the prices of hotels and food to be very accommodating. We stayed two nights at the 5-Star Sheraton Grande Hotel, at a rate of \$150.00 (US) per night, which is a steal. ■





Corporate Loss Prevention Associates, Inc.

JFK International Airport
Cargo Bldg., #151,
Room 341C
Jamaica, NY 11430
Tel: (718) 558-7300
[www. CLPA.com](http://www.CLPA.com)



CORE COMPETENCIES

Corporate Loss Prevention Associates, Inc. (CLPA) delivers integrated, high-performance security solutions with an emphasis on risk mitigation, regulatory compliance, and operational excellence. Our core service areas include:

AVIATION SECURITY SERVICES

- Cargo screening in compliance with TSA and Federal regulations.
- Airport perimeter protection, checkpoint monitoring, and access control. Security consulting and liaison with TSA and airport authorities.
- Insider threat mitigation and behavioral detection strategies.

SECURITY PERSONNEL & GUARD SERVICES

- Armed and unarmed officers are professionally trained and vetted.
- 24/7 site protection with customized post orders.
- Security services for hospitals, financial institutions, residential properties, and high-risk facilities.
- Emergency response, mobile patrols, and incident management.

VULNERABILITY THREAT ASSESSMENTS (VTA)

- Comprehensive analysis of site-specific threats and vulnerabilities.
- Identification of physical, operational, and procedural security gaps.
- Actionable recommendations & tailored security planning.

LOSS PREVENTION & ASSET PROTECTION

- Theft and vandalism deterrence strategies.
- Surveillance system integration and monitoring support.
- Policy compliance enforcement and internal controls for high-value cargo.

TRAINING & COMPLIANCE

- Proprietary security officer training programs based on TSA standards.
- Scenario-based drills, regulatory training, and real-time threat simulations.
- Ongoing compliance audits and continuous improvement programs.

TECHNOLOGY-DRIVEN SECURITY SOLUTIONS

- Integration of access control, CCTV, metal detection, and smart monitoring systems.
- Real-time incident reporting and data analytics for security optimization. Custom security tech deployments for both aviation and non-aviation sectors.

Corporate Loss Prevention Associates, Inc. (CLPA) is a leading provider for over 45 years of comprehensive security solutions, recognized for its deep industry expertise, operational precision, and a customized approach. With a proven track record in safeguarding some of the nation's busiest airports and protecting high-risk, critical infrastructure across multiple sectors, CLPA leverages its Total Security Concept to deliver risk-informed, client-centric protection. Our continued investment in training, compliance, and advanced technology ensures that we stay ahead of evolving threats while maintaining the highest standards of integrity and performance.



As a new owner, **Vidya Ramsammy** now steps into her role by bringing unmatched expertise, leadership, and dedication to the forefront of the security industry. Rising through the ranks from her early days as Vice President in 2011 and President in 2018, Ms. Ramsammy has mastered strategic business operations, security policy implementation, risk assessment, and team management.

A certified NY State Security Instructor, Licensed Private Investigator and ASC Certified Ms. Ramsammy's journey reflects resilience, adaptability, and a sharp focus on growth in a constantly evolving security environment.

CLPA is proud to announce its official certification as a Minority and Women-Owned Business Enterprise (MWBE)—a major milestone as we expand our services across the airport community and beyond.

NIGP CODES

99046 – Security Guard & Patrol Services
68002 – Security Systems Services

NAICS CODES

561612 – Security Guard & Patrol Service
561621 – Security Systems Services

SIC CODES

7382-02 – Security Systems
7381-02 – Security Guard & Patrol Service



M/WBE
Certified



UPCOMING EVENTS



The most comprehensive listing of New York & New Jersey airport and aviation events available anywhere online. metroairportnews.com/ny-airport-events

September 4

PANYNJ ACDBE Certification
Virtual Event
www.panynj.gov

September 8

JFK Airport Rotary Club Ladies Golf Outing
Lawrence Yacht & Country Club
New York 11559
www.jfkrotaryclub.org

September 8

JFK Airport Committee (JFKAC) Quarterly Meeting
Virtual Event
aircraftnoise.panynj.gov/nycar

September 15

Queens Chamber of Commerce Annual Golf Outing
Garden City Country Club
206 Stewart Avenue
Garden City, NY 11530
www.queenschamber.org

September 16

MWBE Certification Webinar
Virtual Event
www.anewjfk.com

September 18

JFK Airport Rotary Club Lunch Meeting
Hilton Garden Inn
Jamaica, New York
www.jfkrotaryclub.org

September 18

Women in Logistics, Leadership, Mentorship, Friendship
Vetro Restaurant & Lounge
Howard Beach, New York 11414
www.jfkaircargo.aero

September 22

JFK Chamber of Commerce Golf Outing
Brookville Country Club
Old Brookville, New York 11545
jfkairportchamberofcommerce.org

September 24

LaGuardia Airport Committee (LGAAC) Meeting
Virtual Event
aircraftnoise.panynj.gov

October 1

2025 MWBE Regional Expo - Queens/Long Island
York College
94-20 Guy R Brewer Blvd,
Jamaica, NY 11451
esd.ny.gov

October 3

Our Lady of the Skies 2025 Luncheon
Crest Hollow Country Club
8325 Jericho Turnpike
Woodbury, New York 11797
www.christfortheworldchapel.org

October 3

PAPD Emerald Society 60th Anniversary Celebration
The Tailor Public House NYC
505 8th Ave.
New York, New York 10018
www.papdemeraldsociety.com

October 4

1st Annual: Battle for The Port Cup
PAPD FC vs. JFK Customs FC
Arthur C. Argauer Memorial Field
Garfield, New Jersey 07026
www.jfkhealthandwelfare.org

October 8

KAAMCO Members Meeting
John F. Kennedy International Airport
Port Authority Building 14
Queens, New York 11430
www.kaamco.org

October 14

ADDAPT Dinner Group
Heritage Club at Bethpage State Park
Farmingdale, New York 1173
www.addaptny.org

October 14

Republic Airport Commission Meeting
Republic Airport-(FRG)
East Farmingdale, New York 11735
www.republicairport.net

October 15

Teterboro Aircraft Noise Abatement Advisory Committee Meeting
Teterboro Airport-(TEB)
Teterboro, New Jersey 07608
aircraftnoise.panynj.gov/tanaac

October 19

School Sisters of Notre Dame Harvest Fest
Monsignor Mulz Hall
88-08 Jamaica Ave.
Woodhaven, New York 11421
www.ssndecwomens.org

October 22

New York Community Aviation Roundtable (NYCAR) Meeting
Virtual Event
aircraftnoise.panynj.gov

October 24

Edge4Vets in NY
Get support to translate your military skills and gain connections to good jobs for great careers in NYC.
Vaughn College of Aeronautics
86-01 23RD Ave.
Flushing, NY 11369
www.edge4vets.org

November 6

22nd Annual Air & Space Gala
Cradle of Aviation Museum
Charles Lindbergh Blvd.
Garden City, NY 11530
www.cradleofaviation.org

November 19

JFK Airport Customs Brokers & Freight Forwarders Association Meeting
Russo's On the Bay
Howard Beach, New York 11414
www.jfkaircargo.aero

OUR LADY OF THE SKIES

2025 Luncheon

Crest Hollow Country Club
8325 Jericho Turnpike
Woodbury, NY

Friday

October 3, 2025

Cocktail Hour: 11:00AM

Luncheon: 12:30PM

Scan to purchase tickets
and packages:



Scan for Scholarship Info
ydephillipsscholarship.org



2025 Honorees



**The Most Reverend
Robert J. Brennan**

Bishop of the Diocese
of Brooklyn

**CLERGY OF THE
YEAR**



Sylvia Rodriguez

Managing Director,
JFK Operations,
Terminal 8 at
American Airlines

**WOMAN OF THE
YEAR**



Claude Vieira

JFK FAA Air Traffic
Manager

MAN OF THE YEAR

Are you a woman working for the Port Authority and seeking professional development and leadership opportunities in the aviation industry?

Come join Women in Aviation Empowered (WAVE)!

WAVE is a chapter of the Port Authority Women's Council (PAWC) that offers the chance to participate in a wide range of enriching events — including community volunteering, clothing drives, airport tours and a speaker series — all while fostering a strong community of women.

Scan the QR code or email debrown@panynj.gov to learn more.

